

CORNER RECORD

Agency Index

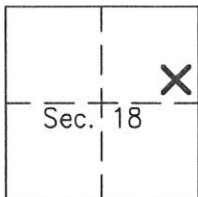
Document Number

448-449

City of Unincorporated Area

County of Plumas, California

Brief Legal Description Lot 5, 6 Maps 128, S 1/2 of Section 18, Township 24 North, Range 10 East, M.D.M.



CORNER TYPE

COORDINATES (Optional)

Government Corner ☐ Control
Meander ☐ Property
Rancho ☐ Other

N. _____ E. _____
☐ Elevation
☒ Units Metric ☐ U.S. Survey Foot ☐
☐ Horizontal Datum _____
Zone _____ Epoch Date _____
Vertical Datum _____

Date of Survey June 13, 2022

☐ Complies with Public Resources Code §§8801-8819
☐ Complies with Public Resources Code §§8890-8902

PLS Act Ref: ☒ 8765(d) ☐ 8771 ☐ 8773 ☐ Other:
Corner/Monument: ☒ Left as found ☐ Established ☐ Rebuilt ☐ Pre-Construction
☐ Found and tagged ☒ Reestablished ☐ Referenced ☐ Post-Construction

Narrative of corner identified and monument as found, set, reset, replaced, or removed:

☐ See sheet #2 for description (s):

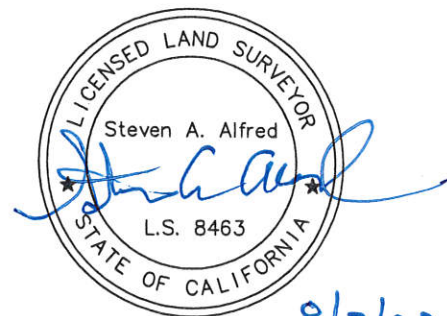
Found 1/2" Rebar with Caps as noted per 6 M 128 & 12 PM 109 as shown on sketch.

Reset missing NE corner & westerly cul-de-sac corner of Lot 5 from found monuments as shown.

SURVEYOR'S STATEMENT

This Corner Record was prepared by me or under my direction in conformance with the Professional Land Surveyors' Act on June 16, 2022

Signed Steven A. Alfred P.L.S. or R.C.E. No. LS 8463



8/3/22

COUNTY SURVEYOR'S STATEMENT

This Corner Record was received July 20, 2022

and examined and filed 8/20/22

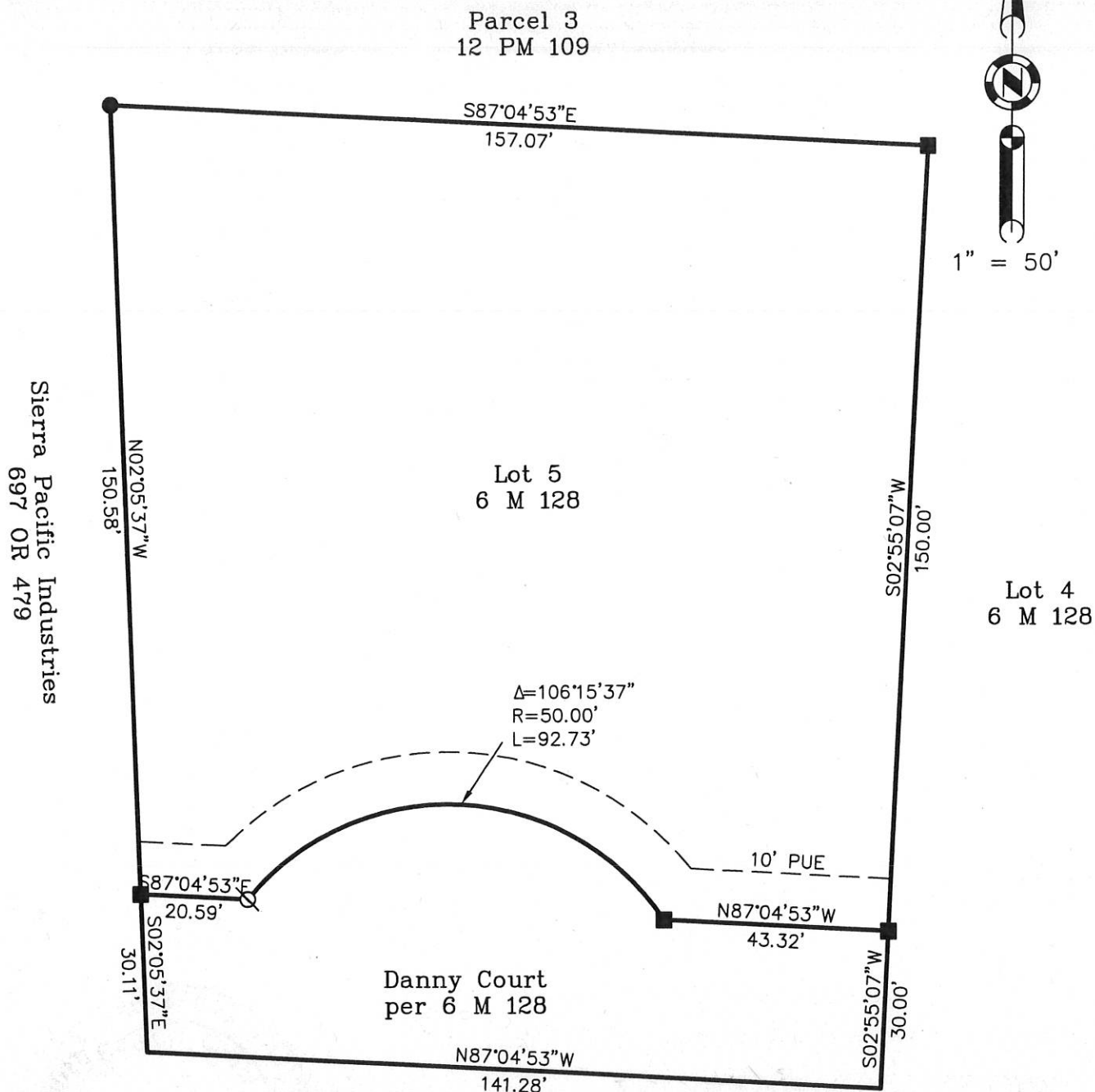
Signed R. Tom Smith P.L.S. or R.C.E. No. 30515

Title County Surveyor



County Surveyor's Comment _____

Bearings and Distances shown hereon are Record
and Measured per 6 M 128 unless noted.



LEGEND

- FOUND 1/2" Rebar with Plastic Cap RCE 22836 per 6 M 128
- FOUND 1/2" Rebar with Aluminum Cap LS 6051 per 12 PM 109
- ⊗ SET 1/2" Rebar with Plastic Cap LS 8463