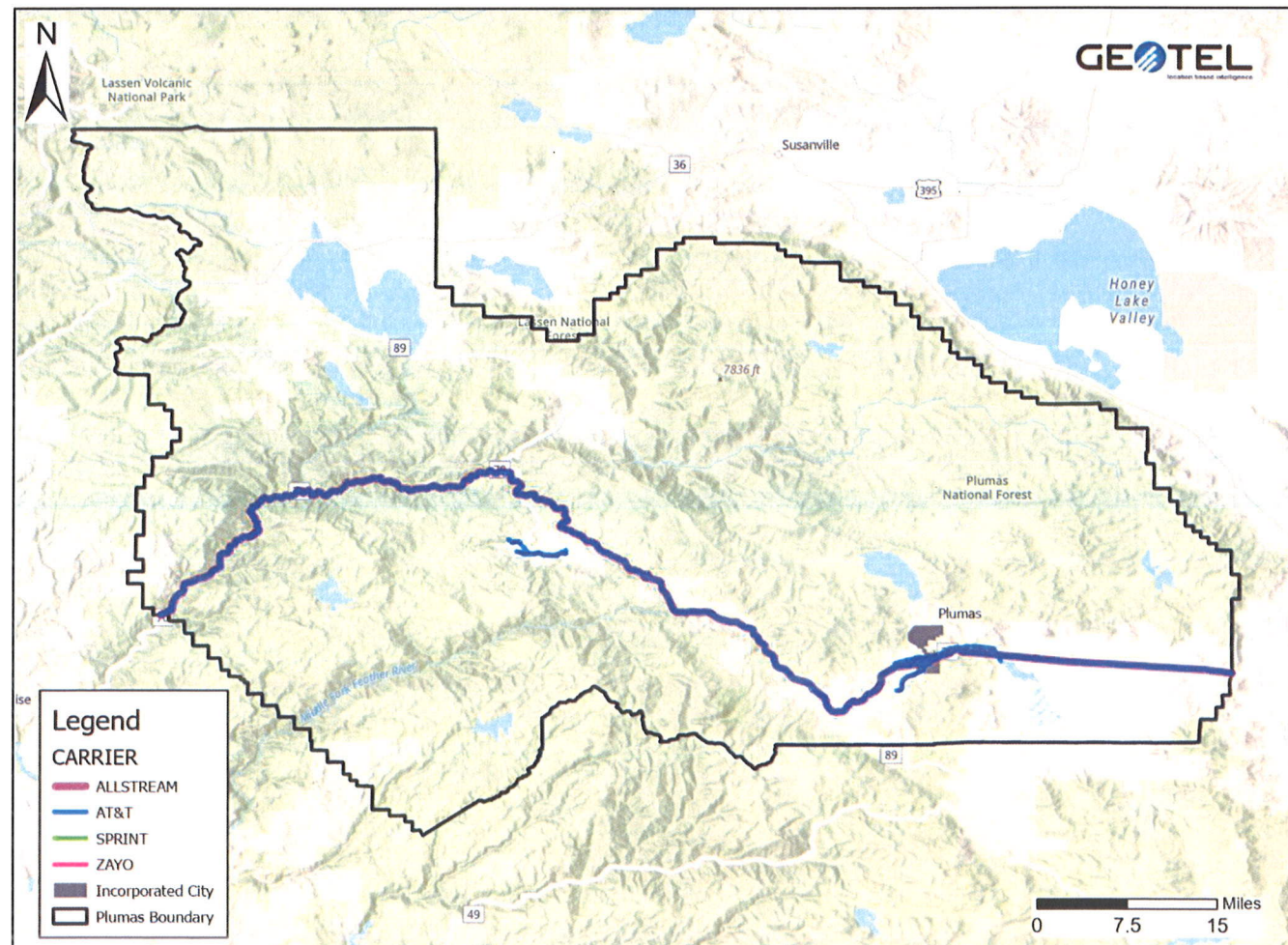


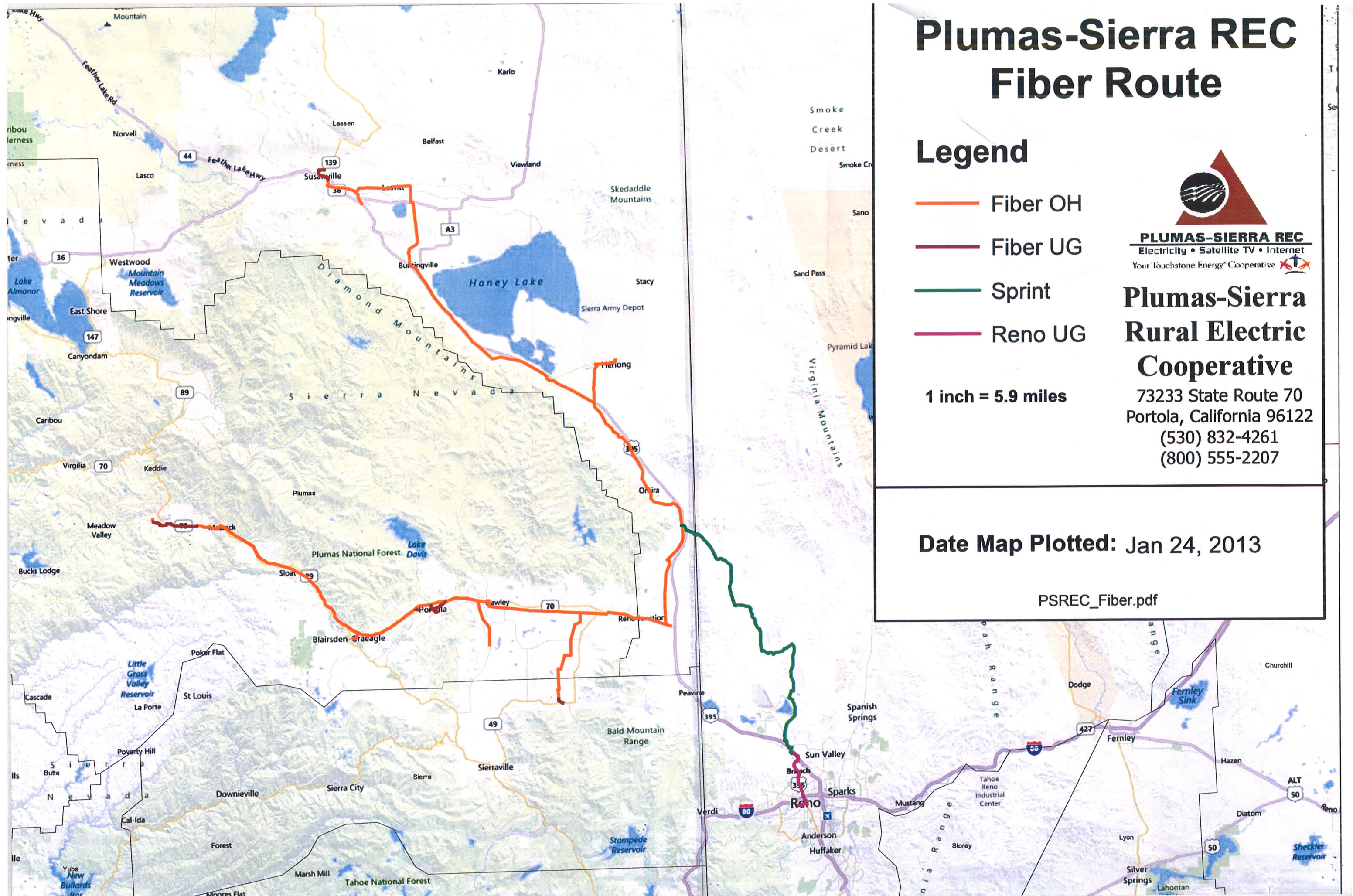
This section explores the currently available broadband infrastructure within Plumas County, including public assets that could potentially be leveraged for expansion. It also provides a gap analysis to highlight areas of need currently lacking sufficient connectivity. This inventory of existing infrastructure assets serves as the foundation upon which any broadband expansion initiatives can be built. In turn, the gap analysis will help identify the disparities between current infrastructure and the broadband connectivity goals recommended here, providing valuable insights into the steps required to bridge these gaps and pave the way for enhanced digital connectivity and economic growth. GIS layers depicted in this section are packaged as an additional deliverable together with this document, in order to empower the county with data that can be used for decision making when prioritizing areas for grant-funded deployments through cooperation or partnerships with ISPs.

5.1 Middle-Mile Fiber Route Inventory

Middle mile fiber infrastructure provides high-capacity bandwidth and data communications from an aggregation point, such as a central office or cable headend, to a fiber point-of-presence (PoP). Access to adequate middle mile infrastructure is a major determinant of the feasibility of last mile broadband infrastructure projects and the basis from which wireline and fixed wireless services are offered to customers.

Figure 30: County Middle-Mile Carriers



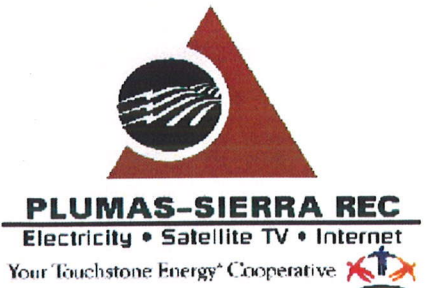


Plumas-Sierra REC Fiber Route

Legend

- Fiber OH
- Fiber UG
- Sprint
- Reno UG

1 inch = 5.9 miles



Plumas-Sierra Rural Electric Cooperative

73233 State Route 70
Portola, California 96122
(530) 832-4261
(800) 555-2207

Date Map Plotted: Jan 24, 2013

PSREC_Fiber.pdf