

# Unauthorized Group Use Incident



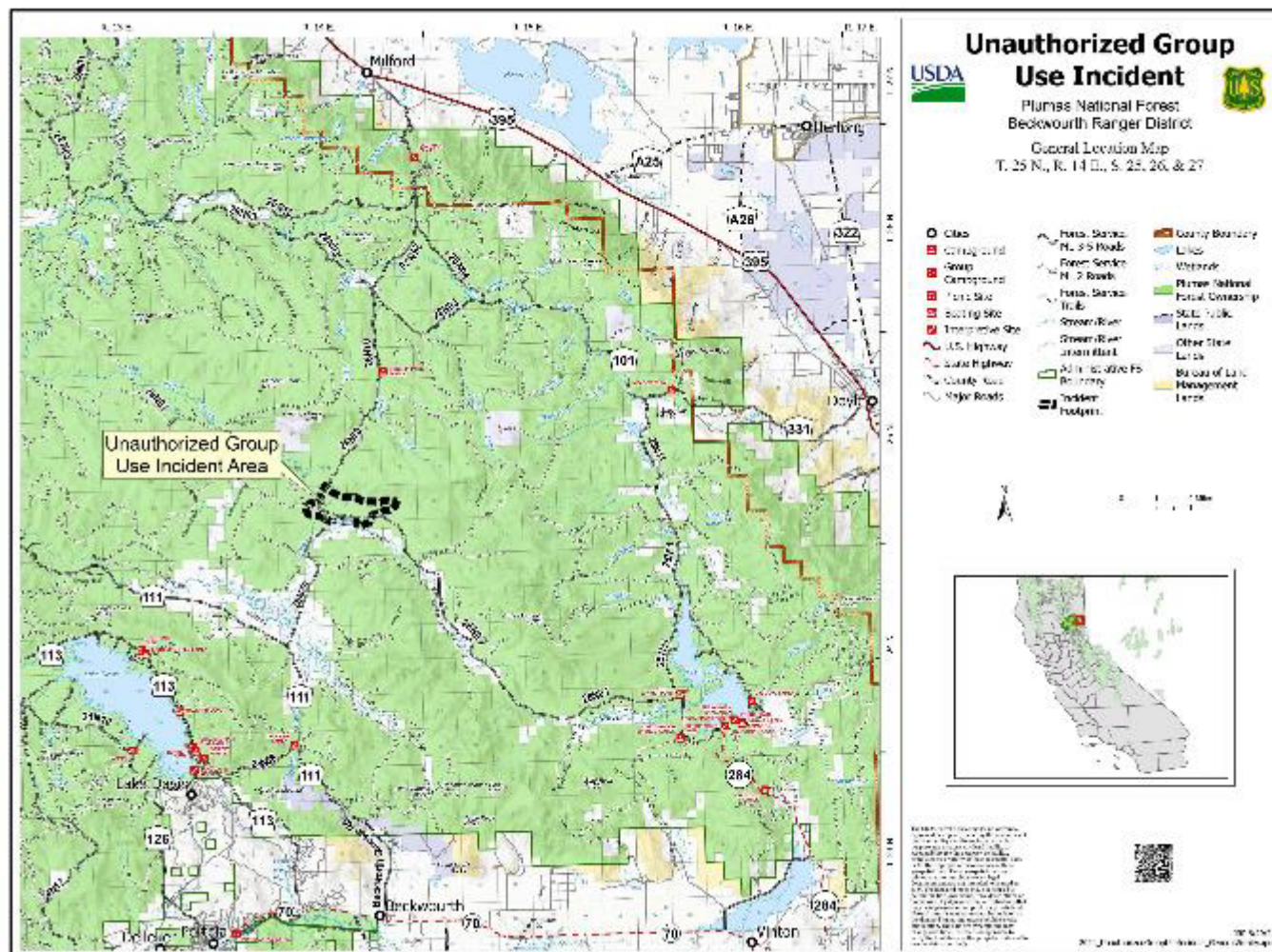
Forest Service

Plumas National Forest





## Site 2: Beckwourth Ranger District



## Forest Service

## Plumas National Forest





United States Department of Agriculture

# Parking – Site 1



Forest Service

Plumas National Forest



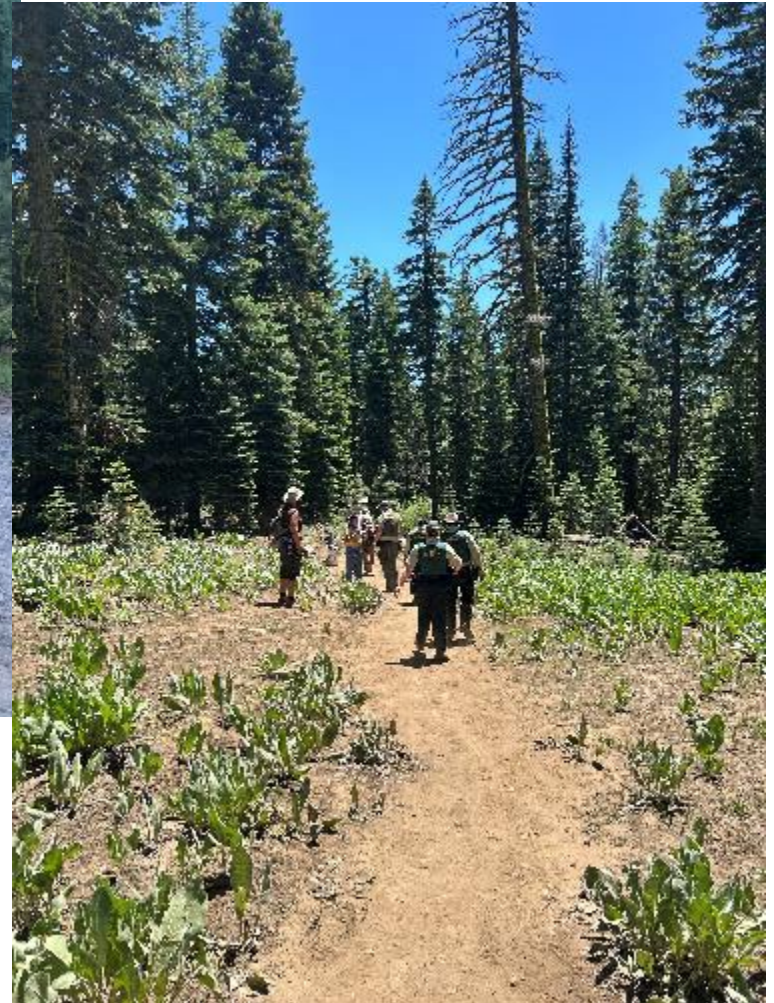
# Parking – Site 2







Site 1 Checkpoint



Site 1 Walkthrough





Site 1



Site 2





Camps at Site 2







Bus at Site 2



Kitchen at Site 2





United States Department of Agriculture



Main Trail at Site 1



Forest Service

Plumas National Forest



# Main Meadows



Site 1



Site 2



Forest Service

Plumas National Forest



# Contact Us

- Public Information:
  - Phone – 530-638-2214
  - Email - [SM.FS.RainbowIMT@usda.gov](mailto:SM.FS.RainbowIMT@usda.gov)
- Website - <https://www.fs.usda.gov/goto/rainbowgathering>



Forest Service

Plumas National Forest





United States Department of Agriculture

---

The U.S. Department of Agriculture (USDA) prohibits discrimination in all its programs and activities on the basis of race, color, national origin, age, disability, and where applicable, sex, marital status, familial status, parental status, religion, sexual orientation, genetic information, political beliefs, reprisal, or because all or part of an individual's income is derived from any public assistance program. (Not all prohibited bases apply to all programs.) Persons with disabilities who require alternative means for communication of program information (Braille, large print, audiotape, etc.) should contact USDA's TARGET Center at (202) 720-2600 (voice and TDD). To file a complaint of discrimination, write USDA, Director, Office of Civil Rights, 1400 Independence Avenue, S.W., Washington, D.C. 20250-9410, or call (800) 795-3272 (voice) or (202) 720-6382 (TDD). USDA is an equal opportunity provider and employer.



**Forest Service**

**Plumas National Forest**