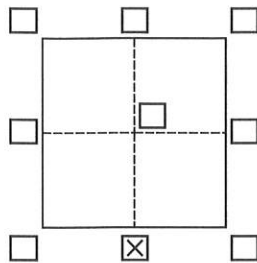


CORNER RECORD

Agency Index 458
Document Number _____

City of _____ County of Plumas, California
Brief Legal Description S 1/4 of Sec 17, T26N R14E MDM



CORNER TYPE

Government Corner ☒ Control
Meander ☐ Property
Rancho ☐ Other

Date of Survey May 27, 2021

COORDINATES (Optional)

N. 1923887.16 E. 7001704.08

Elevation _____

Units Metric ☐ U.S. Survey Foot ☒

Horizontal Datum NAD 83

Zone CA 1 Epoch Date 2011

Vertical Datum _____

☐ Complies with Public Resources Code §§8801-8819

☐ Complies with Public Resources Code §§8890-8902

PLS Act Ref.: ☐ 8765(d) ☐ 8771 ☒ 8773 ☐ Other:

Corner/
Monument: ☐ Left as found ☐ Established ☒ Rebuilt ☐ Pre-Construction
☐ Found and tagged ☐ Reestablished ☐ Referenced ☐ Post-Construction

Narrative of corner identified and monument as found, set, reset, replaced, or removed:

☒ See sheet #2 for description(s):

SURVEYOR'S STATEMENT

This Corner Record was prepared by me or under my direction in conformance with

the Professional Land Surveyors' Act on November 18, 2024

Signed Kam Kozlocki P.L.S. or R.C.E. No. 8972



COUNTY SURVEYOR'S STATEMENT

This Corner Record was received 11/14/24

and examined and filed 12/16/24

Signed R. Tom Zandt P.L.S. or R.C.E. No. 30515

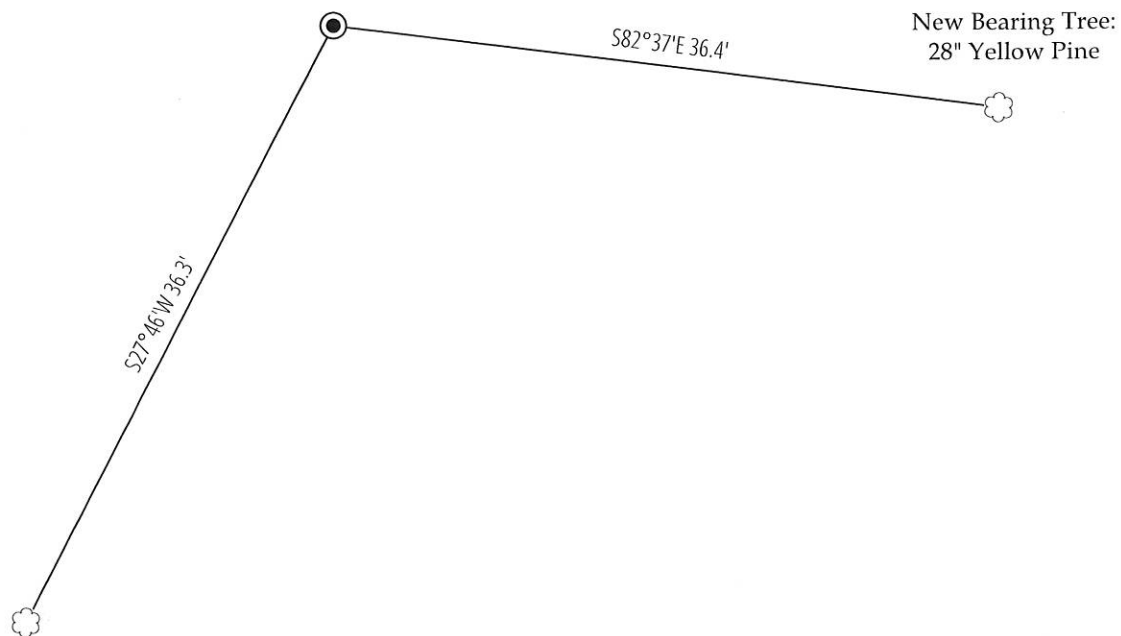
Title CONTRACT COUNTY SURVEYOR

County Surveyor's Comment



Found remains of rock mound.
Set 2" alum. pipe w/ 3" cap in center of re-
built rock mound, stamped:

T26N R14E
S17
1/4 -----
S20
LS 8972
2021



Found 41" Yellow Pine, accepted as bearing
tree per 1874 GLO field notes, being a
14" pine S 26° W, 57 links (37.6')

