

**RESOLUTION OF THE PLUMAS COUNTY BOARD OF SUPERVISORS
APPROVING THE EXECUTION OF A COOPERATIVE AGREEMENT
WITH CALTRANS FOR THE USE OF COUNTY ROUTE A13 AS A DETOUR
DURING THE CONSTRUCTION OF THE LAKE ALMANOR SPILLWAY
BRIDGE REPLACEMENT PROJECT**

WHEREAS, under California Streets and Highways Code (SHC) Section 93, the State of California by and through its Department of Transportation ("CALTRANS") is authorized to construct, maintain and direct State Highway traffic onto a detour as may be necessary to facilitate movement of traffic where State highways are closed or obstructed by construction or otherwise; and

WHEREAS, CALTRANS's project to perform State Highway System (SHS) improvements consisting of replacing the Lake Almanor Spillway Bridge (No, 09-0044), located on State Route 89 located at post-mile 30.0. In order to construct said improvements, CALTRANS will be closing a portion of SR89, which will require State highway traffic to be detoured onto County Route A-13 referred to hereinafter as "DETOUR;" and

WHEREAS, CALTRANS will pay COUNTY a lump sum amount of \$35,000 under Cooperative Agreement #02-0159 to reimburse COUNTY for wear and tear incurred on DETOUR while under CALTRANS use for all reasonable additional expenses incurred by COUNTY in maintaining said local roadway as a detour and upon the completion of such usage, the costs of restoring the detour to its former condition.

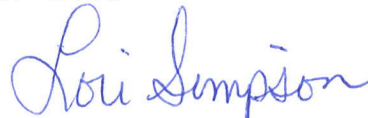
NOW, THEREFORE BE IT RESOLVED by the Board of Supervisors of the County of Plumas, State of California, that the Chair of the Board of Supervisors is hereby authorized to execute the Cooperative Agreement #02-0159 on behalf of the County of Plumas.

The foregoing Resolution was duly passed and adopted by the Board of Supervisors of the County of Plumas, State of California, at a regular meeting of said Board held on June 13, 2017, by the following vote:

AYES: SUPERVISORS: ENGEL, THRALL, GOSS, SANCHEZ, SIMPSON

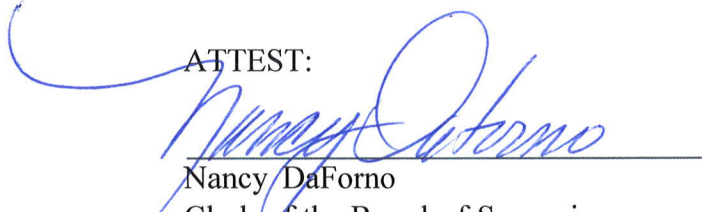
NOES: SUPERVISORS: NONE

ABSTAIN/ABSENT: SUPERVISORS: NONE



Lori Simpson
Chair, Board of Supervisors

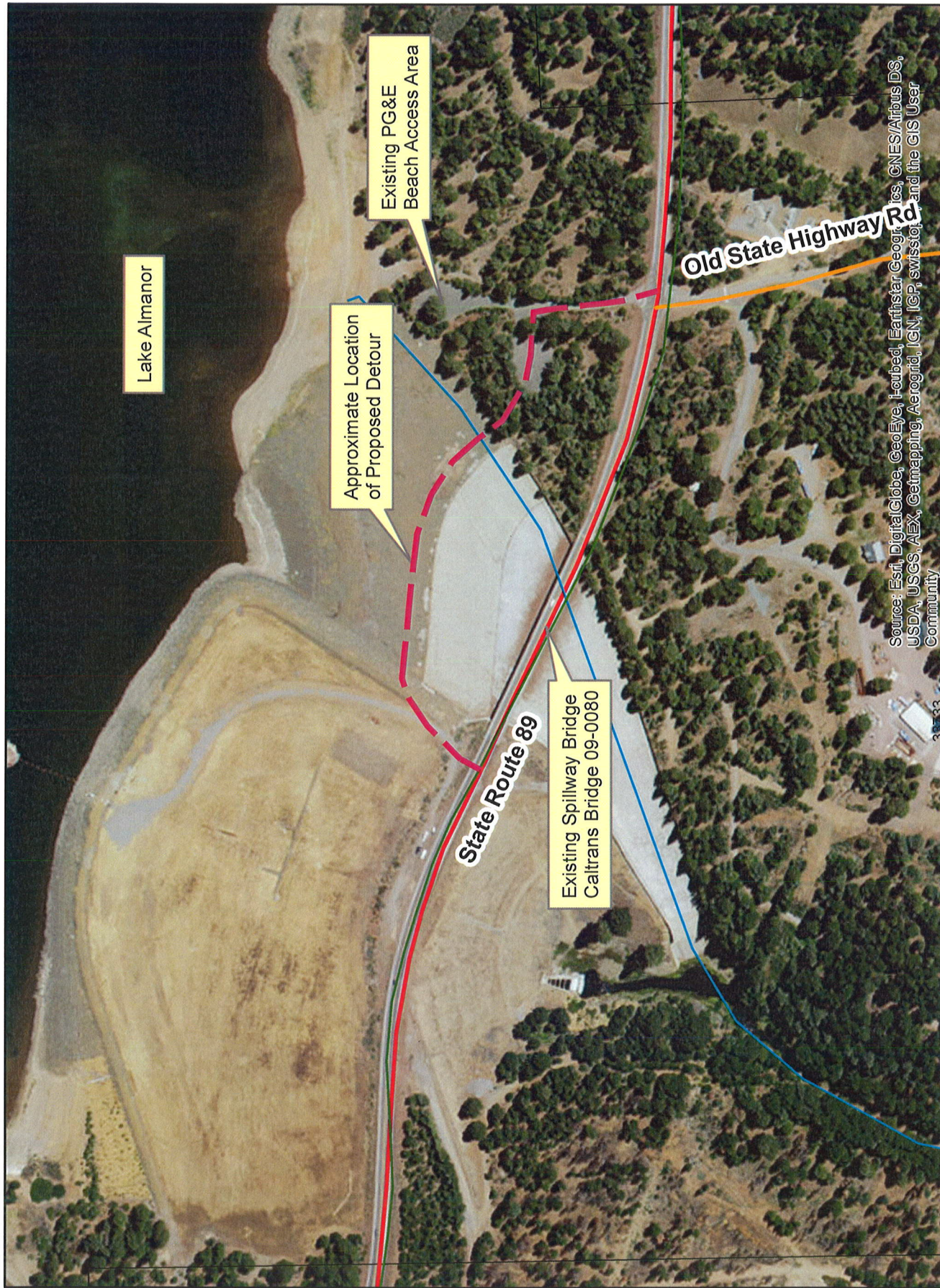
ATTEST:



Nancy DaForno
Clerk of the Board of Supervisors



1 inch = 300 feet



LAKE ALMANOR SPILLWAY BRIDGE REPLACEMENT PROJECT
Public Works Proposed Detour at the Spillway Bridge Location
March 31, 2016