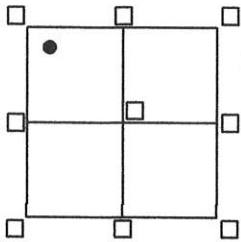


# CORNER RECORD

Agency Index 448  
 Document Number \_\_\_\_\_

City of UNINCORPORATED AREA County of PLUMAS, California

Brief Legal Description LOT 53 GRIZZLY RANCH UNIT#1  
BOOK 9 OF MAPS PAGE 88 P.C.R.



SEC. 16  
 T.23N.  
 R.14E.  
 M.D.M.

### CORNER TYPE

Government Corner  Control   
 Meander  Property   
 Rancho  Other   
 Date of Survey 2/08/22

### COORDINATES (Optional)

N. \_\_\_\_\_ E. \_\_\_\_\_  
 Elevation \_\_\_\_\_  
 Units  Metric  U.S. Survey Foot  
 Horizontal Datum \_\_\_\_\_  
 Zone \_\_\_\_\_ Epoch Date \_\_\_\_\_  
 Vertical Datum \_\_\_\_\_  
 Complies with Public Resources Code 8801-8891  
 Complies with Public Resources Code 8890-8902

PLS Act Ref:  8765(d)  8771  8773  Other:

Corner/Monument:  Left as found  Established  Rebuilt  Pre-Construction  
 Found and tagged  Reestablished  Referenced  Post-Construction

Narrative of corner identified and monuments as found, set, reset, replaced, or moved:

See sheet #2 for description(s):

● = FOUND 5/8" REBAR W/ 2" ALUM. CAP STAMPED L.S. 2843 PER 9/MAPS/88 P.C.R.

○ = SET BATHEY MONUMENT (T-BAR) W/ NAIL & TAG STAMPED P.L.S. 8628  
 JN:22005

### SURVEYOR'S STATEMENT

This Corner Record was prepared by me or under my direction in conformance with  
 the Professional Land Surveyor's Act on FEBRUARY 8, 2022

Signed [Signature] P.L.S. or R.C.E. No. 8628  
LIC. EXP. 12/31/23



### COUNTY SURVEYOR'S STATEMENT

This Corner Record was received 2/22/22

and examined and filed 3/10/22

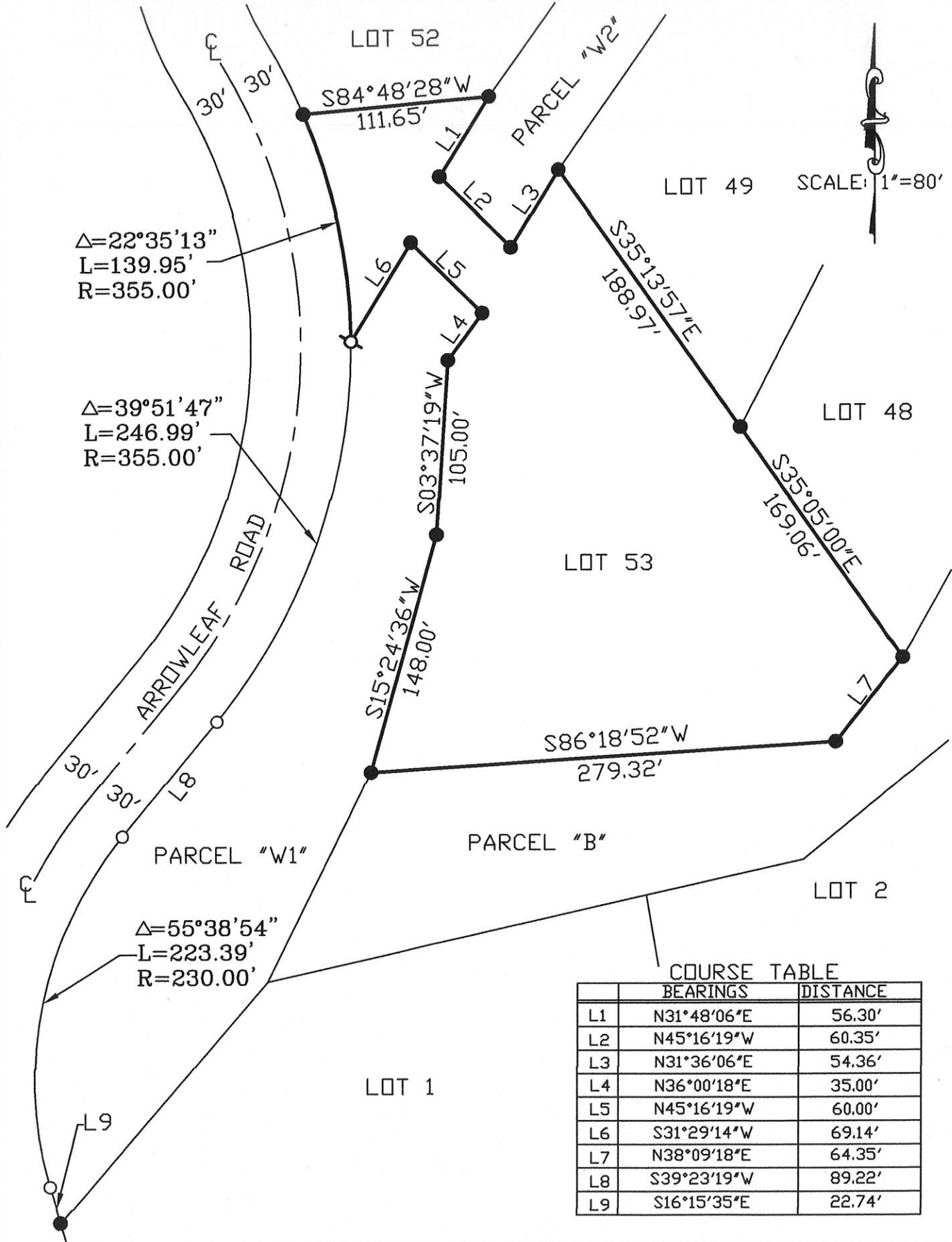
Signed R Tom Spanta P.L.S. or R.C.E. No. 30515

Title County Surveyor

County Surveyor's Comment \_\_\_\_\_



NOTE: THE BEARINGS AND DISTANCES SHOWN ARE RECORD PER 9/MAPS/88 P.C.R. NO MATERIAL DISCREPANCIES WITH RECORD INFORMATION WERE FOUND.



COURSE TABLE

	BEARINGS	DISTANCE
L1	N31°48'06"E	56.30'
L2	N45°16'19"W	60.35'
L3	N31°36'06"E	54.36'
L4	N36°00'18"E	35.00'
L5	N45°16'19"W	60.00'
L6	S31°29'14"W	69.14'
L7	N38°09'18"E	64.35'
L8	S39°23'19"W	89.22'
L9	S16°15'35"E	22.74'