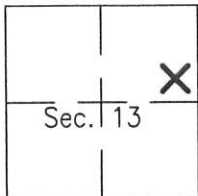


CORNER RECORD

Agency Index 450
 Document Number _____

City of Unincorporated Area County of Plumas, California
 Brief Legal Description Lot 3, 4 Maps 139, NE 1/4 Section 13, Township 24 North, Range 09 East, M.D.M.



CORNER TYPE

- Government Corner Control
 Meander Property
 Rancho Other

COORDINATES (Optional)

- N. _____ E. _____
 Elevation _____
 Units Metric U.S. Survey Foot
 Horizontal Datum _____
 Zone _____ Epoch Date _____
 Vertical Datum _____

Date of Survey June 16, 2022

- Complies with Public Resources Code §§8801-8819
 Complies with Public Resources Code §§8890-8902

PLS Act Ref: 8765(d) 8771 8773 Other:

Corner/Monument: Left as found Established Rebuilt Pre-Construction
 Found and tagged Reestablished Referenced Post-Construction

Narrative of corner identified and monument as found, set, reset, replaced, or removed:

See sheet #2 for description (s):

Found 1/2" Steel Pins with Plastic Caps marked C. Brown RCE 22836 per 4 M 139 as shown on attached sketch. Reset missing NW corner of Lot 3, 4" deep, from found monuments as shown. Corner falls in gravel driveway and is subject to disturbance, therefore, I Set Mag Nail in pavement northerly on projected property line distant 15.00' as witness.

SURVEYOR'S STATEMENT

This Corner Record was prepared by me or under my direction in conformance with the Professional Land Surveyors' Act on June 16, 2022

Signed Steven A. Alfred P.L.S. or R.C.E. No. LS 8463



COUNTY SURVEYOR'S STATEMENT

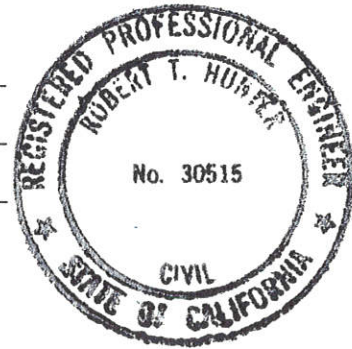
This Corner Record was received July 20, 2022

and examined and filed 8/20/22

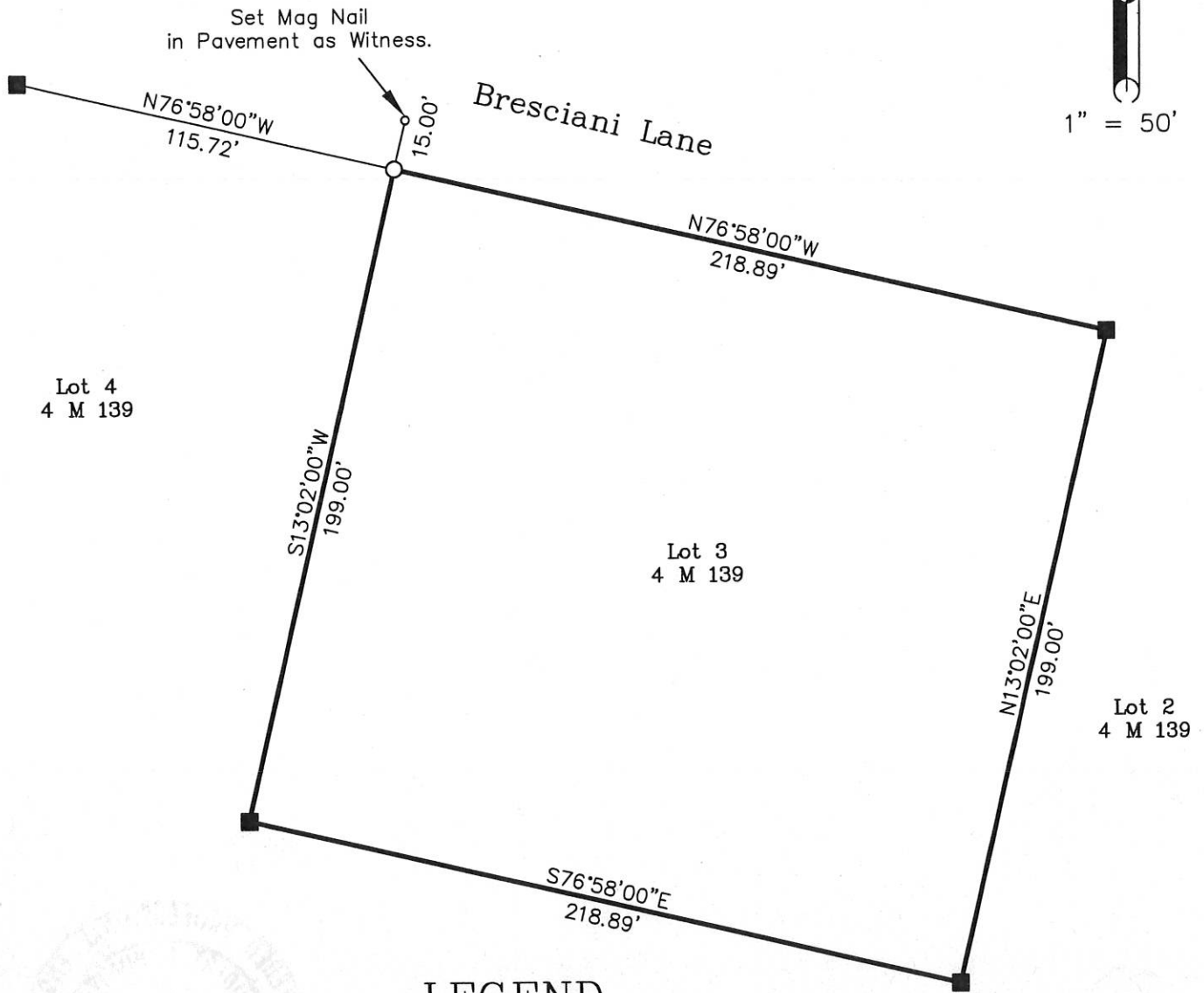
Signed R Tom Hunt P.L.S. or R.C.E. No. 30515

Title County Surveyor

County Surveyor's Comment _____



Bearings and Distances shown hereon are Record and Measured per 4 M 139 unless noted.



LEGEND

- FOUND 1/2" Steel Pin with Plastic Cap RCE 22836
- SET 1/2" Rebar with Aluminum Cap LS 8463
- SET Mag Nail as Witness