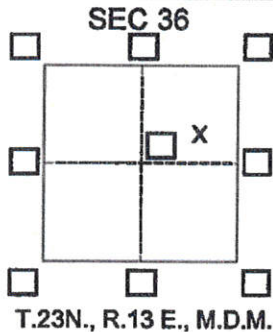


# CORNER RECORD

Agency Index 451  
Document Number \_\_\_\_\_

City of \_\_\_\_\_ County of Plumas, California  
Brief Legal Description PARCEL 1 OF BOOK 08 RECORD OF SURVEYS PAGE 116



### CORNER TYPE

Government Corner  Control   
 Meander  Property   
 Rancho  Other   
 Date of Survey November 18, 2022

### COORDINATES (Optional)

N. \_\_\_\_\_ E. \_\_\_\_\_  
 Elevation \_\_\_\_\_  
 Units Metric  U.S. Survey Foot   
 Horizontal Datum \_\_\_\_\_  
 Zone \_\_\_\_\_ Epoch Date \_\_\_\_\_  
 Vertical Datum \_\_\_\_\_  
 Complies with Public Resources Code §§8801-8819  
 Complies with Public Resources Code §§8890-8902

PLS Act Ref.:  8765(d)  8771  8773  Other:  
 Corner/Monument:  Left as found  Established  Rebuilt  Pre-Construction  
 Found and tagged  Reestablished  Referenced  Post-Construction

Narrative of corner identified and monument as found, set, reset, replaced, or removed:  
 See sheet #2 for description(s):

Found monuments per Book 08 Record of Surveys Page 116. Set a lost corner of Parcel 1 with a 1" Iron Pipe Tagged LS 4370.  
 SEE ATTACHED SKETCH

### SURVEYOR'S STATEMENT

This Corner Record was prepared by me or under my direction in conformance with  
 the Professional Land Surveyors' Act on 11-21-22  
 Signed Andrew R. Cassano L.S. or R.C.E. No. PLS 4370

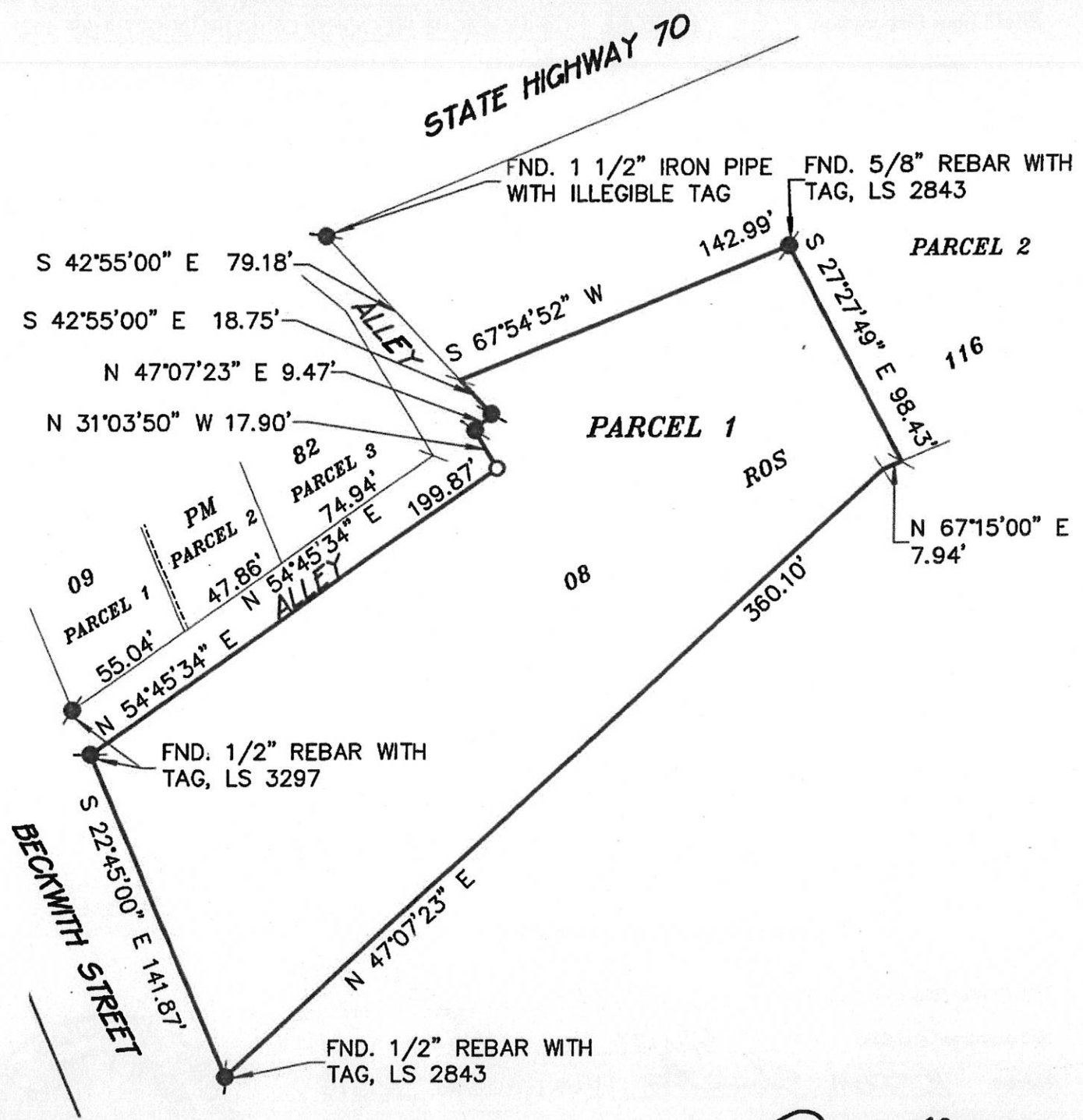


### COUNTY SURVEYOR'S STATEMENT

This Corner Record was received 3/9/23  
 and examined and filed 5/18/23  
 Signed R. Tom Sluiter P.L.S. or R.C.E. No. 30515  
 Title County Surveyor  
 County Surveyor's Comment \_\_\_\_\_



**FEI**  
SCALE: 1" = 60'



**LEGEND**

- FOUND 5/8" REBAR WITH NO TAG OR AS NOTED
- SET 1" IRON PIPE & TAG LS 4370
- NOTHING FOUND, NOTHING SET

*Andrew R. Cassano*

