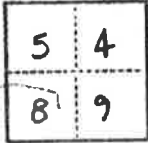


# CORNER RECORD

COUNTY OF Plumas T. 23 N. R. 7 E. MD B & P. MERIDIAN CALIFORNIA

CORNER TYPE: GOVT. CORNER  MEANDER  RANCHO  CONTROL  OTHER   
 CORNER IDENTIFICATION — DATE OF VISIT 11/18/1976



CORNER — LEFT AS FOUND  FOUND AND TAGGED  REESTABLISHED OBLITERATED CORNER  RESULT

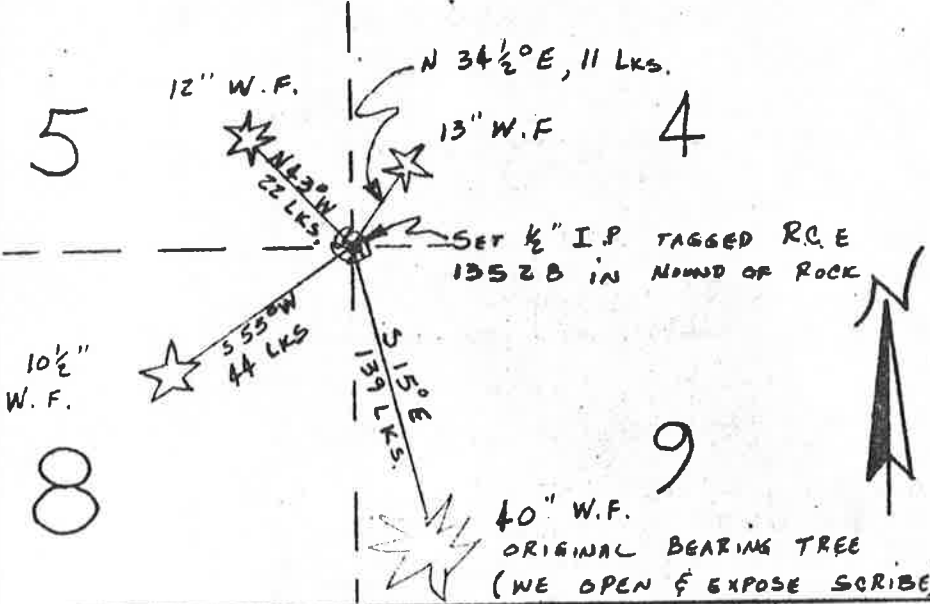
PHYSICAL DESCRIPTION OF CORNER FOUND; EVIDENCE AND METHOD USED TO IDENTIFY OR REESTABLISH  
 FOUND ORIGINAL BEARING TREE (WE OPEN AND EXPOSE SCRIBING)  
 40" W.F. IR S 15° E 139 LKS FITS ORIGINAL NATA-CALLS

PHYSICAL DESCRIPTION OF MONUMENTS RESULT OR PERPETUATED  
 PLACED 1/2" I.P. TAGGED R.C.E 13528 IN MOUND OF ROCK  
 SCRIBED 13" W.F. IR N 34 1/2° E, 11 LKS.; 12" W.F. IR N 43° W, 22 LKS.; 10 1/2" W.F. IR S 55° W, 44 LKS.

TREES SCRIBED WITH S-T 23 N R 7 E AND "K" TAGGED

CALIFORNIA COORDINATE SYSTEM ORDER: FIRST  SECOND  THIRD   
 STATIONS USED: NGS (USC & GS)  STATE  COUNTY  OTHER  STATION BUCK A STATION BULLHORN A  
 ZONE 1 ELEVATION \_\_\_\_\_ NORTHINGS (N) 195,826.273 EASTINGS (X) 2,222,054.878

SKETCH: (Include reference tie or witness points, remarks and topo of area)



PERPETUATED 11/18/76  
 BY J. BROCK — P.C.R.D.  
 O. BROWN — U.S.F.S.  
 T. HUNTER — P.C.R.D.  
 R. HUMPHREY — P.C.R.D.

NOTE: NEW BEARING TREES  
 SCRIBED & "K" TAGGED

**SURVEYOR'S CERTIFICATE**

THIS CORNER RECORD WAS PREPARED BY ME OR UNDER MY DIRECTION IN CONFORMANCE WITH THE LAND SURVEYORS ACT ON 11-18 1977

SIGNED: J. Brock  
 or R.C.E. No. 13528

**COUNTY SURVEYOR'S CERTIFICATE**

THE CORNER RECORD WAS RECEIVED \_\_\_\_\_ 19\_\_\_\_  
 AND EXAMINED AND FILED \_\_\_\_\_ 19\_\_\_\_

BY: \_\_\_\_\_  
 TITLE: \_\_\_\_\_

DOCUMENT No. 11

STATEMENT ON BACK OF SHEET YES  NO

SEAL