

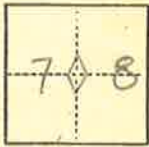
# CORNER RECORD

(6)

COUNTY OF Plumas T. 23 N, R. 7 E MDBE MERIDIAN CALIFORNIA

CORNER TYPE: GOV'T. CORNER  MEANDER  RANCHO  CONTROL  OTHER

CORNER IDENTIFICATION — DATE OF VISIT 12/7/1977



1/4 SECTION CORNER

CORNER — LEFT AS FOUND  FOUND AND TAGGED  REESTABLISHED OBLITERATED CORNER  REBUILT

**PHYSICAL DESCRIPTION OF CORNER FOUND; EVIDENCE AND METHOD USED TO IDENTIFY OR REESTABLISH**

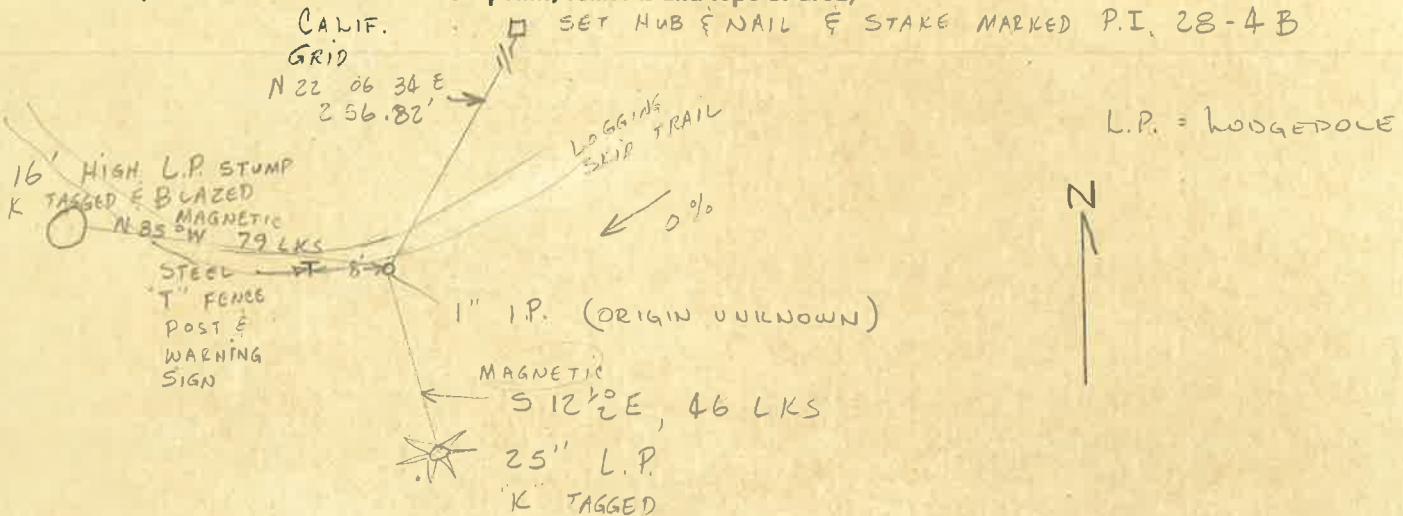
FOUND 1" INSIDE DIAMETER IRON PIPE PROJECTING 2' W/ STEEL "T" FENCE POST & U.S.F.S. WARNING SIGN N 90° W 8' E 2" K TAGGED BEARING TREES  
 (1) B.T. 16' HIGH 3' D. BLAZED STUMP N 85° W 79 LKS. (POSSIBLE ORIGINAL B.T.)  
 (2) B.T. 25" L.P. S 12 1/2° E 46 LKS.

**PHYSICAL DESCRIPTION OF MONUMENTS REBUILT OR PERPETUATED**

MONUMENT LEFT AS FOUND  
 SET H.E.N. FOR AZIMUTH MARK, W/ STAKE MARKED PI 28-4B CALIF. GRID N 22.06 34 E, 256.82'

CALIFORNIA COORDINATE SYSTEM ORDER: FIRST  SECOND  THIRD   
 STATIONS USED: NGS (USC & GS)  STATE  COUNTY  OTHER  STATION \_\_\_\_\_ STATION \_\_\_\_\_  
 ZONE 1 ELEVATION \_\_\_\_\_ NORTHINGS (Y) 193,440.42 EASTINGS (X) 2,216,901.02

**SKETCH: (Include reference tie or witness points, remarks and topo of area)**



**SURVEYOR'S CERTIFICATE**

THIS CORNER RECORD WAS PREPARED BY ME OR UNDER MY DIRECTION IN CONFORMANCE WITH THE LAND SURVEYORS ACT ON 12/15/1977

SIGNED: Jessie J. Brock  
 L.S. or R.C.E. No.: RCE 1328

SEAL

**COUNTY SURVEYOR'S CERTIFICATE**

THE CORNER RECORD WAS RECEIVED \_\_\_\_\_ 19\_\_\_\_ AND EXAMINED AND FILED 12-21-1977

BY: John D. Felt  
 TITLE: Co. Engr.

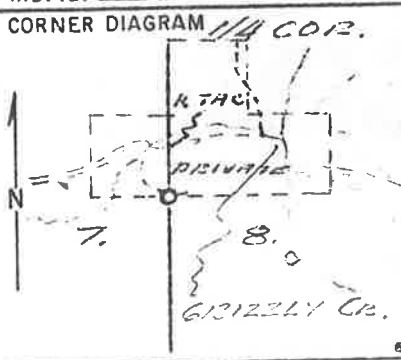
DOCUMENT No. 12

STATEMENT ON BACK OF SHEET

YES  NO

Index File No. 7-5  
T 23N R. 7E  
Merid. MDM

R.D. DEWILLE County PLUMAS  
N.F. PLUMAS State CALIF.



DESCRIBE CORNER MONUMENT FOUND  
RECORD - SET POST  
FOUND - 1 1/2" IRON PIPE

DESCRIBE BEARING TREES OR OTHER OFFICIAL ACCESSORIES FOUND  
RECORD - 5" TAMMIRACK 515°E-46 LKS.  
24" " N85°N-79 LKS.  
FOUND - 25" L.P. - 512°E-46 LKS W/ MARKED C. IN BURIAL; SCRIPTING VISIBLE.  
29" (L.B.) L.P. - ± 16" HIGH STUB.  
N85°N-79 LKS W/ SCRIPTING, PART OPEN BURIAL.

PHOTO IDENTIFICATION DATA  
Photo No. \_\_\_\_\_  
Filed At. \_\_\_\_\_  
Object Ident. \_\_\_\_\_  
Ident. By \_\_\_\_\_  
Signature \_\_\_\_\_

PLANE COORDINATE POSITION DATA  
State \_\_\_\_\_ Zone \_\_\_\_\_  
Y \_\_\_\_\_  
Estab. By \_\_\_\_\_  
Agency \_\_\_\_\_

DESCRIBE CORNER LOCATION RELATIVE TO NEAR-BY FEATURES, ALSO HOW TO REACH CORNER  
CORNER IN SOUTH EDGE OF LOGGING SIGN.  
SW OF WET AREA.  
± EACH END OF LITTLE GRIZZLY CR. BRIDGE (COUNTY ROAD) 1/4 M. N.E. CORNER SOUTH ± 11 1/2 CHAINS.

Signature \_\_\_\_\_ Title \_\_\_\_\_ Division \_\_\_\_\_ Headquarters \_\_\_\_\_ Date \_\_\_\_\_ 7100-52 (3.68)

CORNER RECORD (PERPETUATION)

MONUMENT: DESCRIBE NEW MONUMENT SET, OR WORK DONE TO PRESERVE EXISTING MONUMENT

ACCESSORIES: DESCRIBE NEW BT'S WITNESS OBJECTS ETC. ESTABLISHED, OR WORK DONE TO PRESERVE EXISTING EVIDENCE

Work Done By \_\_\_\_\_ Title \_\_\_\_\_ Date \_\_\_\_\_ State Registration No. or Agency \_\_\_\_\_  
Certified Cor. Record Prepared? Yes No Filed At: \_\_\_\_\_ Date \_\_\_\_\_

REMARKS  
PLACED ATTN. SIGNS N/A SOUTH, BT TAGS & PAINT RED BANDS ON 2 CORN. BTs.