

CORNER RECORD

COUNTY OF Plumas T. 25 N R. 8 E M.D.B.E MERIDIAN CALIFORNIA

CORNER TYPE: GOV'T. CORNER MEANDER RANCHO CONTROL OTHER

CORNER IDENTIFICATION — DATE OF VISIT 12/30/1977



CORNER — LEFT AS FOUND FOUND AND TAGGED REESTABLISHED OBLITERATED CORNER REBUILT

PHYSICAL DESCRIPTION OF CORNER FOUND; EVIDENCE AND METHOD USED TO IDENTIFY OR REESTABLISH

PHYSICAL DESCRIPTION OF MONUMENTS REBUILT OR PERPETUATED

CALIFORNIA COORDINATE SYSTEM ORDER: FIRST SECOND THIRD
 STATIONS USED: NGS (USC & GS) STATE COUNTY OTHER STATION PUSH A STATION PUSH Azi.
 ZONE 1 ELEVATION _____ NORTHINGS (Y) 249,699.554 EASTINGS (X) 2,267,537.918

SKETCH: (Include reference tie or witness points, remarks and topo of area)

LEGEND

M.O.R. = MOUND OR ROCK

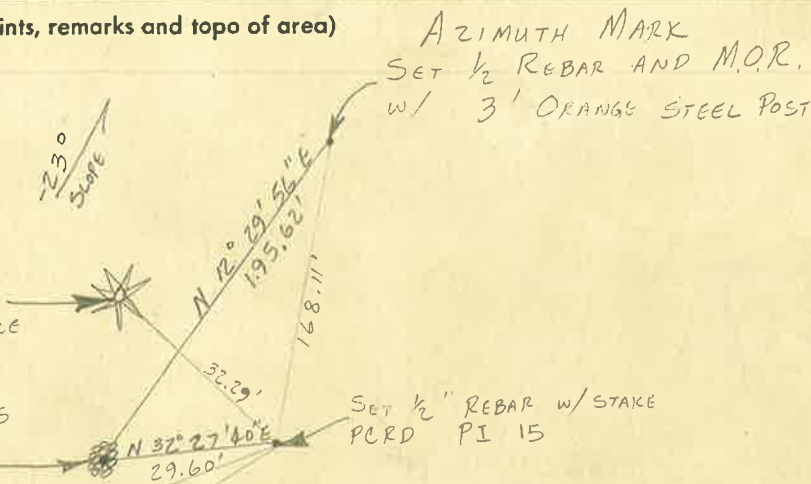
W/ = WITH

FOUND 30" RED FIR W/
 "K" TAG ON N FACE - 5 ± 1 CH
 TO 1/4 CORNER 23+24
 SET TAG RCE 13528 IN OUR BLAZE

FOUND M.O.R. FITTING "K" TAGS
 SET 1/2 I.P. W/ TAG RCE 13528

FOUND 4" x 4" POST → 32.63

FOUND 10" WHITE FIR W/ RED STRIPE
 AND "K" TAG SCRIBED N 5° E 15 LKS.
 TO ASSUMED 1/4 CORNER 23+24



AZIMUTH MARK
 SET 1/2 REBAR AND M.O.R.
 W/ 3' ORANGE STEEL POST

SET 1/2" REBAR W/ STAKE
 PCRD PI 15

NOTE:
 BEARINGS TO THE REBARS ARE BASED ON THE
 CALIFORNIA CO-ORDINATE SYSTEM ZONE 1

No SCALE

SURVEYOR'S CERTIFICATE

THIS CORNER RECORD WAS PREPARED BY ME OR UNDER MY
 DIRECTION IN CONFORMANCE WITH THE LAND SURVEYORS ACT
 ON NOVEMBER 3, 1978

SIGNED: Lawrence J. Brack
 L.S. or (R.C.E.) No.: 13528

SEAL

COUNTY SURVEYOR'S CERTIFICATE

THE CORNER RECORD WAS RECEIVED Nov 8 1978
 AND EXAMINED AND FILED Nov 8 1978

BY: Clifford K. Brown
 TITLE: Assistant Co. Engr

DOCUMENT No. 14

STATEMENT ON BACK OF SHEET

YES NO

002-240-