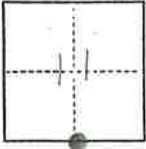


CORNER RECORD

COUNTY OF Plumas T. 23 N. R. 7 E. MDBE MERIDIAN CALIFORNIA
 CORNER TYPE: GOV'T. CORNER MEANDER RANCHO CONTROL OTHER
 CORNER IDENTIFICATION — DATE OF VISIT 1/13 1977



S 1/4 Section 11

CORNER — LEFT AS FOUND FOUND AND TAGGED REESTABLISHED OBLITERATED CORNER REBUILT

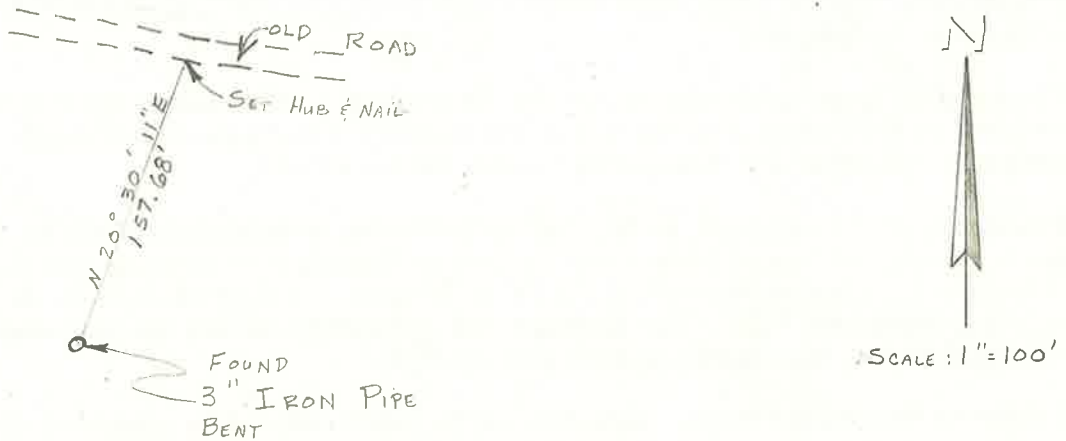
PHYSICAL DESCRIPTION OF CORNER FOUND; EVIDENCE AND METHOD USED TO IDENTIFY OR REESTABLISH

FOUND 3" IRON PIPE (BENT)

PHYSICAL DESCRIPTION OF MONUMENTS REBUILT OR PERPETUATED

CALIFORNIA COORDINATE SYSTEM ORDER: FIRST SECOND THIRD
 STATIONS USED: NGS (USC & GS) STATE COUNTY OTHER STATION Buckhorn A STATION Buckhorn A
 ZONE 1 ELEVATION _____ NORTHINGS (Y) 191 026.71 EASTINGS (X) 2 234 943.40

SKETCH: (Include reference tie or witness points, remarks and topo of area)



SURVEYOR'S CERTIFICATE

THIS CORNER RECORD WAS PREPARED BY ME OR UNDER MY DIRECTION IN CONFORMANCE WITH THE LAND SURVEYORS ACT ON 12/12/77

SIGNED: Lawrence J. Brock
 L.S. or R.C.E. No.: 13528



SEAL

COUNTY SURVEYOR'S CERTIFICATE

THE CORNER RECORD WAS RECEIVED 12-14- 1978 AND EXAMINED AND FILED 12-14-1978
 BY: Clifford R. Brock
 TITLE: Ass't Co. ENGR

DOCUMENT No. 15

STATEMENT ON BACK OF SHEET

YES NO