

CORNER RECORD

COUNTY OF Plumas T. 29N R. 11E MDB&M MERIDIAN CALIFORNIA
 CORNER TYPE: GOVT. CORNER MEANDER RANCHO CONTROL OTHER
 CORNER IDENTIFICATION - DATE OF VISIT November 1978

9	10
16	15

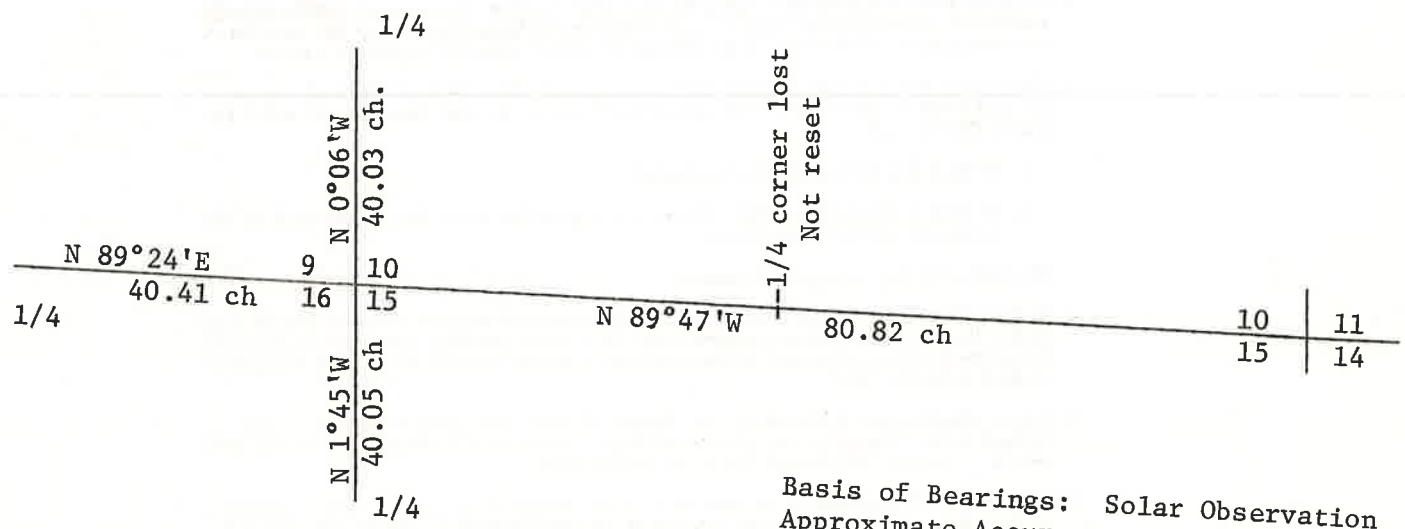
CORNER - LEFT AS FOUND FOUND AND TAGGED REESTABLISHED ~~OBTERATED~~-CORNER Lost REBUILT

PHYSICAL DESCRIPTION OF CORNER FOUND; EVIDENCE AND METHOD USED TO IDENTIFY OR REESTABLISH
 Corner Lost - No evidence Found - Set by double proportion
 Found 1/4 corner Sec's 9 & 16 = 1/2" iron pipe Tagged L.S. 3297 per P/M 5-11
 Found 1/4 corner Sec's 9 & 10 = Stone mound w/12" Oak B.T. N 37°W 18 Links
 Found 1/4 corner Sec's 15 & 16 = Fd. 24" x 11" x 7" stone scribed "1/4" in stone mound.
 Found Sec. Corner 10,11,14 & 15 = Fd. 1/2" iron pipe Tagged L.S. 3297 per P/M 5-11

PHYSICAL DESCRIPTION OF MONUMENTS REBUILT OR PERPETUATED
 Set 1" iron pipe for Section Corner tagged Pipe "L.S. 3202"

CALIFORNIA COORDINATE SYSTEM ORDER: FIRST SECOND THIRD
 STATIONS USED: NGS (USC & GS) STATE COUNTY OTHER STATION _____
 ZONE _____ ELEVATION _____ NORTHINGS (Y) _____ EASTINGS (X) _____

SKETCH: (Include reference tie or witness points, remarks and topo of area)



Basis of Bearings: Solar Observation
 Approximate Accuracy: 1 : 3000

SURVEYOR'S CERTIFICATE
 THIS CORNER RECORD WAS PREPARED BY ME OR UNDER MY DIRECTION IN CONFORMANCE WITH THE LAND SURVEYORS ACT ON January 30,

SIGNED: Paul L. Simpson
 L.S. or R.C.E. No.: L.S. 3202



COUNTY SURVEYOR'S CERTIFICATE
 THE CORNER RECORD WAS RECEIVED 3-5-1979 AND EXAMINED AND FILED March 19

BY: Lawrence J. Brock
 TITLE: _____

DOCUMENT No. 16
 STATEMENT ON BACK OF SHEET

YES NO