

PLUMAS County
Public Works Agency – Surveyor's Office

CORNER RECORD

County of PLUMAS T. 28N R. 7E M.D. Meridian California

Corner Type: Gov't. Corner Meander Rancho Control Other

Corner Identification – Date of Visit April 29 19 80



Corner – Left as Found Found and Tagged Reestablished Obliterated Corner Rebuilt

Physical Description of Corner Found; Evidence and Method Used to Identify or Reestablish

No corner monument found. Reestablished per R.S. 2/126.

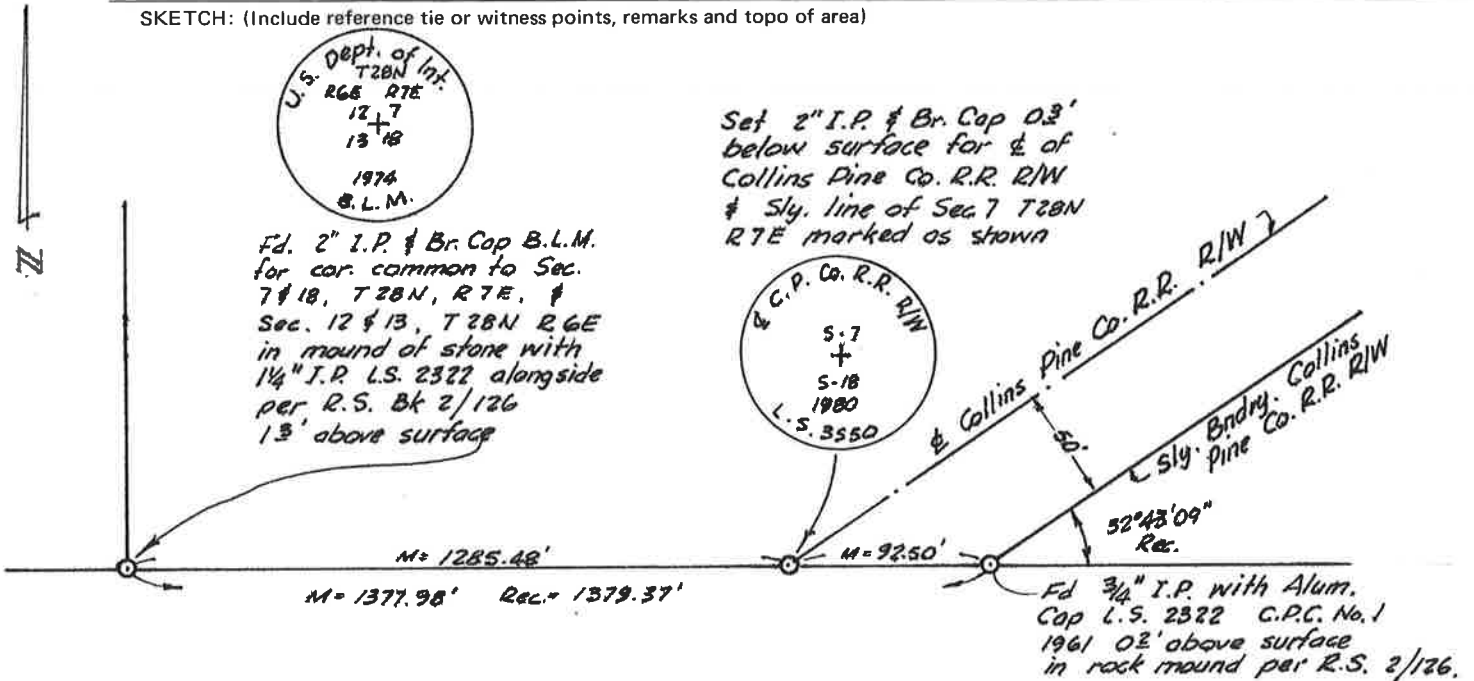
Physical Description of Monuments Rebuilt or Perpetuated

California Coordinate System Order: First Second Third

Stations Used: NGS (USC & GS) State County Other Station _____ Station _____

Zone _____ Elevation _____ Northings (Y) _____ Eastings (X) _____

SKETCH: (Include reference tie or witness points, remarks and topo of area)



SURVEYOR'S CERTIFICATE

This Corner Record was prepared by me or under my direction in conformance with the Land Surveyors Act on April 29, 19 80

Signed: Robert J. Eagle

L.S. or R.C.E. No.: L.S. 3580 CALIF.



COUNTY SURVEYOR'S CERTIFICATE

The Corner Record was received May 5 19 80 and examined and filed May 6 19 80.

By: Robert J. Shurtz RCE 30515

Title: Assistant Engineer

Document No. 17

Statement on Back of Sheet Yes No