

**C O R N E R   R E C O R D**

COUNTY OF PLUMAS T. 24 N R. 5 E M.D. MERIDIAN CALIFORNIA

CORNER TYPE: GOV'T CORNER  MEANDER  RANCHO  CONTROL  OTHER   
 CORNER IDENTIFICATION - DATE OF VISIT 8-14 19 80

CORNER - LEFT AS FOUND  FOUND AND TAGGED  REESTABLISHED OBLITERATED CORNER  REBUILT

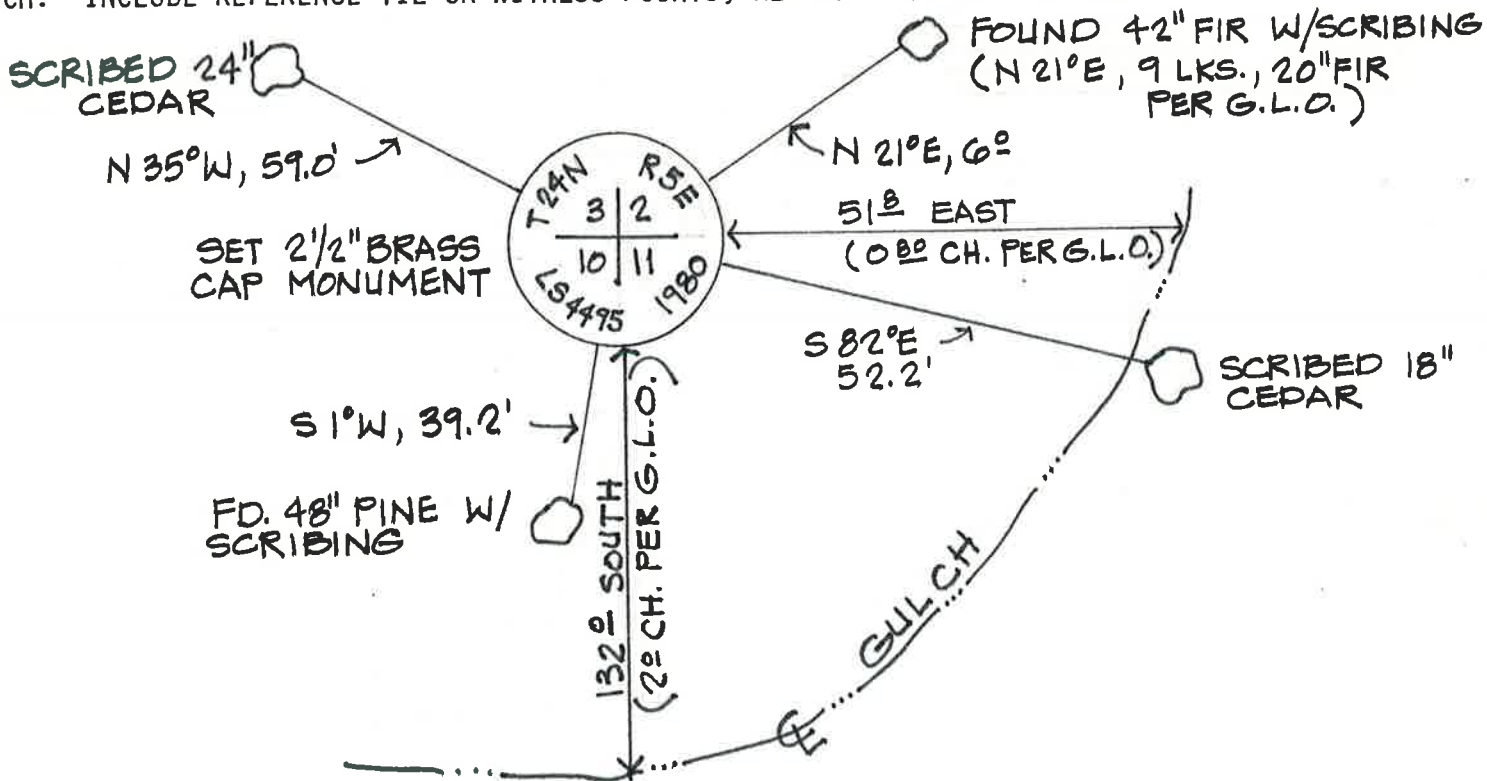
PHYSICAL DESCRIPTION OF CORNER FOUND: EVIDENCE AND METHOD USED TO IDENTIFY OR REESTABLISH  
FD. ORIGINAL B.T.'S & VERIFIED G.L.O. CALCULATIONS

PHYSICAL DESCRIPTION OF MONUMENTS REBUILT OR PERPETUATED

BLAZED & SCRIBED NEW B.T.'S & SET MONUMENT

CALIFORNIA COORDINATE SYSTEM ORDER: FIRST  SECOND  THIRD   
 STATIONS USED: NGS (USC & GS)  STATE  COUNTY  OTHER  STATION \_\_\_\_\_ STATION \_\_\_\_\_  
 ZONE \_\_\_\_\_ ELEVATION \_\_\_\_\_ NORTHINGS (Y) \_\_\_\_\_ EASTINGS (X) \_\_\_\_\_

SKETCH: INCLUDE REFERENCE TIE OR WITNESS POINTS, REMARKS AND TOPO OF AREA



**SURVEYOR'S CERTIFICATE**

THIS CORNER RECORD WAS PREPARED BY ME OR UNDER MY DIRECTION IN CONFORMANCE WITH THE LAND SURVEYORS ACT ON

Oct. 15 19 80  
 SIGNED Roger L. Ackerman  
 L.S. OR R.C.E. NO. L.S. 4495  
**ROGER L. ACKERMAN**

**COUNTY SURVEYOR'S CERTIFICATE**

THE CORNER RECORD WAS RECEIVED October 22 1980 AND EXAMINED AND FILED October 27 1980

BY: R. Tom Hunter RCE 30515  
 TITLE: Assistant Engineer  
 DOCUMENT NO. 18  
 STATEMENT ON BACK OF SHEET YES  NO

002-250