

<sup>1/4</sup>  
( 54 | 53 )  
CORNER RECORD

COUNTY OF PLUMAS T. 21N R. 8E M. D. MERIDIAN CALIFORNIA

CORNER TYPE: GOV'T CORNER  MEANDER  RANCHO  CONTROL  OTHER   
 CORNER IDENTIFICATION - DATE OF VISIT Nov 19 80

CORNER - LEFT AS FOUND  FOUND AND TAGGED  REESTABLISHED OBLITERATED CORNER  REBUILT

PHYSICAL DESCRIPTION OF CORNER FOUND: EVIDENCE AND METHOD USED TO IDENTIFY OR REESTABLISH

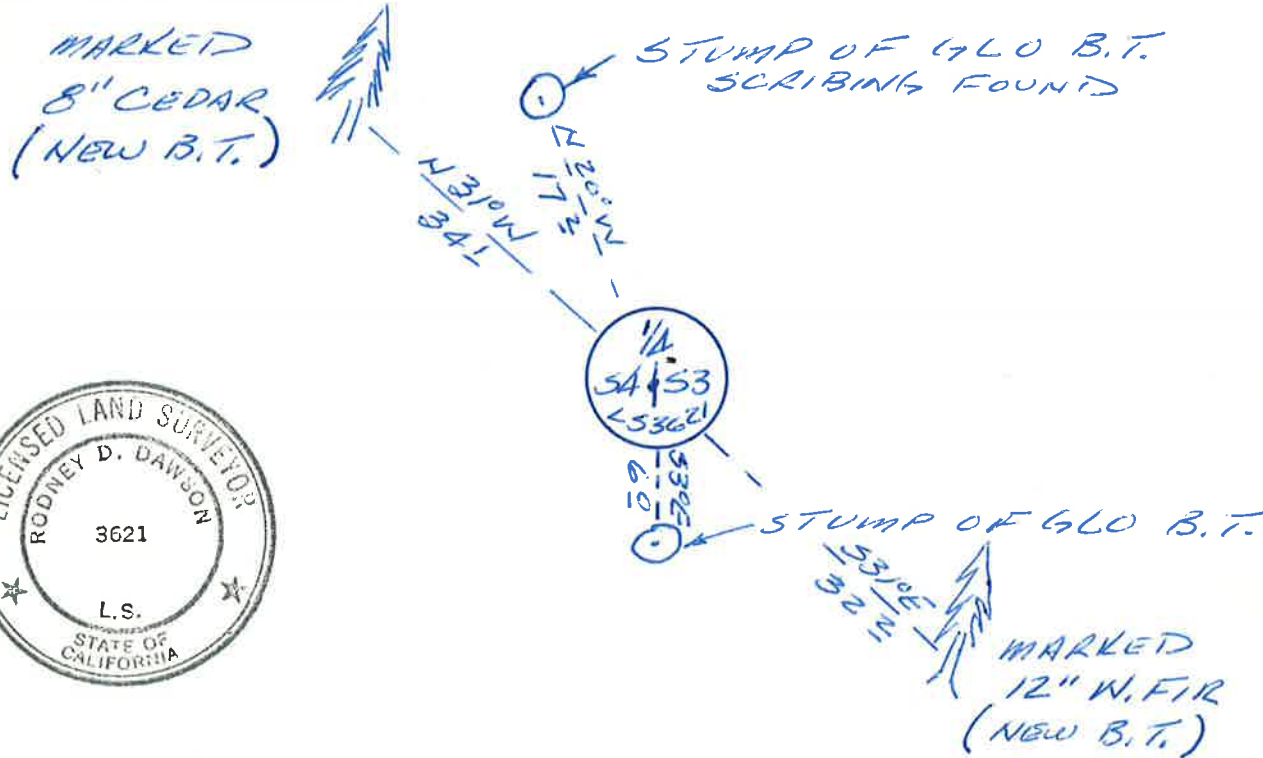
BEARING & DIST. FROM G.L.O. B.T.'s (STUMPS)

PHYSICAL DESCRIPTION OF MONUMENTS REBUILT OR PERPETUATED

U.S.F.S. ALUM MON IN STONE MOUND

CALIFORNIA COORDINATE SYSTEM ORDER: FIRST  SECOND  THIRD  N.A.  
 STATIONS USED: NGS (USC & GS)  STATE  COUNTY  OTHER  STATION STATION  
 ZONE ELEVATION NORTHINGS (Y) EASTINGS (X)

SKETCH: INCLUDE REFERENCE TIE OR WITNESS POINTS, REMARKS AND TOPO OF AREA



SURVEYOR'S CERTIFICATE

THIS CORNER RECORD WAS PREPARED BY ME OR UNDER MY DIRECTION IN CONFORMANCE WITH THE LAND SURVEYORS ACT ON

Jan 12 19 81  
 SIGNED Rodney D. Dawson  
 L.S. OR R.C.E. NO. L5 3621

COUNTY SURVEYOR'S CERTIFICATE

THE CORNER RECORD WAS RECEIVED Jan 15 1981  
 AND EXAMINED AND FILED Feb 27 1981

BY: R Tom Hunter  
 TITLE: Assistant Engineer  
 DOCUMENT NO. 20  
 STATEMENT ON BACK OF SHEET YES  NO