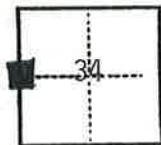


CORNER RECORD

COUNTY OF PLUMAS T. 26N R. 7E Mt. Diablo MERIDIAN CALIFORNIA

CORNER TYPE: GOVT. CORNER MEANDER RANCHO CONTROL OTHER
 CORNER IDENTIFICATION — DATE OF VISIT Mar. 26 1981



WEST 1/4 CORNER SECTION 34

CORNER — LEFT AS FOUND FOUND AND TAGGED REESTABLISHED OBLITERATED CORNER REBUILT

PHYSICAL DESCRIPTION OF CORNER FOUND; EVIDENCE AND METHOD USED TO IDENTIFY OR REESTABLISH

Found: 1" O.D. iron pipe with 2½" brass cap
(outside diameter)

Marked → 1/4
S33/S34
1939

in mound of rock with "K" tagged tree

U.S.G.L.O.

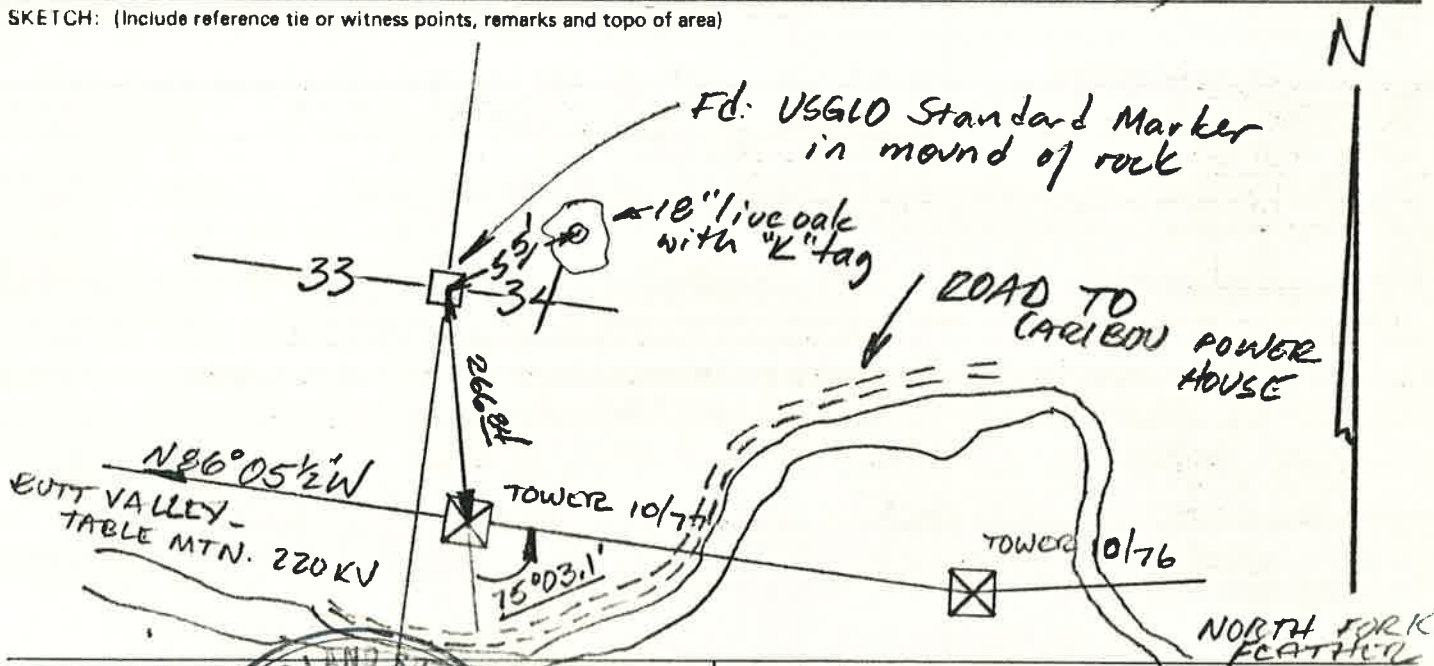
PHYSICAL DESCRIPTION OF MONUMENTS REBUILT OR PERPETUATED

CORNER LOCATED BY P.G.&E. SURVEY
BUT NOT VERIFIED

PACIFIC GAS AND ELECTRIC CO.
LAND DEPT. JOB ED 2301

CALIFORNIA COORDINATE SYSTEM ORDER: FIRST SECOND THIRD
 STATIONS USED: NGS (USC & GS) STATE COUNTY OTHER STATION _____ STATION _____
 ZONE _____ ELEVATION _____ NORTHINGS (N) _____ EASTINGS (E) _____

SKETCH: (Include reference tie or witness points, remarks and topo of area)



SURVEYOR'S CERTIFICATE
 THIS CORNER RECORD WAS PREPARED BY ME OR UNDER MY DIRECTION IN CONFORMANCE WITH THE LAND SURVEYORS ACT ON _____

SIGNED: _____

L.S. or R.C.E. No. _____



COUNTY SURVEYOR'S CERTIFICATE
 THE CORNER RECORD WAS RECEIVED June 5 1981
 AND EXAMINED AND FILED July 2 1981

BY: R. Tom Hunter
 TITLE: Assistant Engineer

DOCUMENT No. 21

STATEMENT ON BACK OF SHEET

YES NO

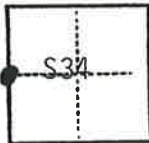
2nd sheet attached

CORNER RECORD

COUNTY OF PLUMAS T. 25N R. 7E Mt. Diablo MERIDIAN CALIFORNIA

CORNER TYPE: GOV'T. CORNER MEANDER RANCHO CONTROL OTHER

CORNER IDENTIFICATION — DATE OF VISIT March 26, 19 81



WEST QUARTER SECTION 34

CORNER — LEFT AS FOUND FOUND AND TAGGED REESTABLISHED OBLITERATED CORNER REBUILT

PHYSICAL DESCRIPTION OF CORNER FOUND; EVIDENCE AND METHOD USED TO IDENTIFY OR REESTABLISH

U.S.G.L.O. standard marker - 1" outside diameter pipe with 2½" brass cap. .1/4
 Located from PGandE tower and Almanor Quad. S33/S34
 Accepted as found. 1939

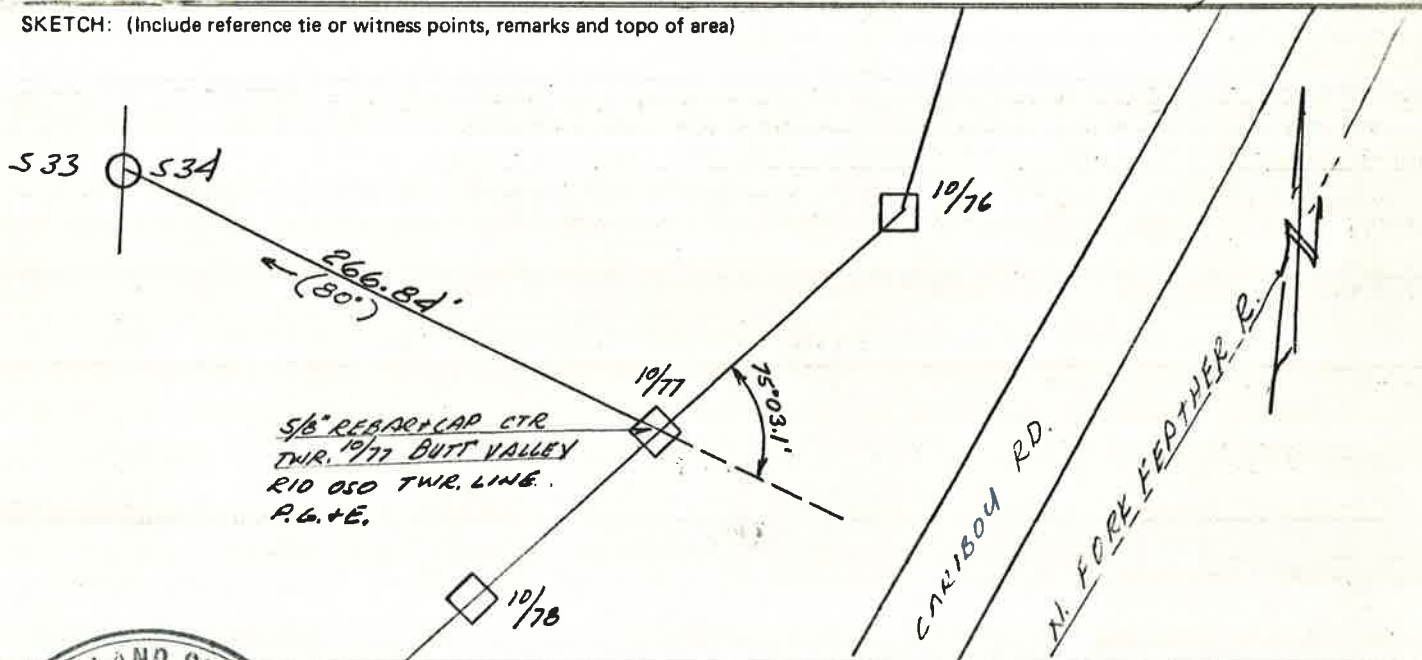
PHYSICAL DESCRIPTION OF MONUMENTS REBUILT OR PERPETUATED

CORNER LOCATED BY P.G.&E. SURVEY
 BUT NOT VERIFIED

PACIFIC GAS AND ELECTRIC CO.
 LAND DEPT. JOB ED 2301

CALIFORNIA COORDINATE SYSTEM ORDER: FIRST SECOND THIRD
 STATIONS USED: NGS (USC & GS) STATE COUNTY OTHER STATION _____ STATION _____
 ZONE _____ ELEVATION _____ NORTHINGS (N) _____ EASTINGS (E) _____

SKETCH: (Include reference tie or witness points, remarks and topo of area)



SURVEYOR'S CERTIFICATE

THIS CORNER RECORD WAS PREPARED BY ME OR UNDER MY DIRECTION IN CONFORMANCE WITH THE LAND SURVEYORS ACT
 No. 3771 MAY 19 1981

SIGNED: [Signature]
 L.S. or R.C.E. No. 3771

SEAL

COUNTY SURVEYOR'S CERTIFICATE

THE CORNER RECORD WAS RECEIVED _____ 19____
 AND EXAMINED AND FILED _____ 19____

BY: _____
 TITLE: _____

DOCUMENT No. _____

STATEMENT ON BACK OF SHEET YES NO

002-140