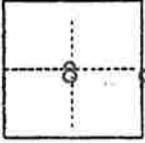


CORNER RECORD

COUNTY OF Plumas T. 22 N. R. 13 E. Mount Diablo MERIDIAN CALIFORNIA

CORNER TYPE: GOV'T. CORNER MEANDER RANCHO CONTROL OTHER

CORNER IDENTIFICATION — DATE OF VISIT June 5 1982



1/4 Corner
Common to
Sections 8 & 9

RECORD: Set Post

Scribed: 10" Pitch Pine Brs. N61.5 E, 30 Lks.

8" Pitch Pine Brs. N31W, 14 Lks.

CORNER — LEFT AS FOUND FOUND AND TAGGED REESTABLISHED OBLITERATED CORNER REBUILT

PHYSICAL DESCRIPTION OF CORNER FOUND; EVIDENCE AND METHOD USED TO IDENTIFY OR REESTABLISH

FOUND: J. Pine stump 5" diameter by 3"x 14" in 14" stump hole, scribing "BT" faintly visible. Also J. Pine cut stump 4" diameter pitched heartwood in 12" stump hole fits bearing and distance (N31W, 14 Lks.) with other stump hole.

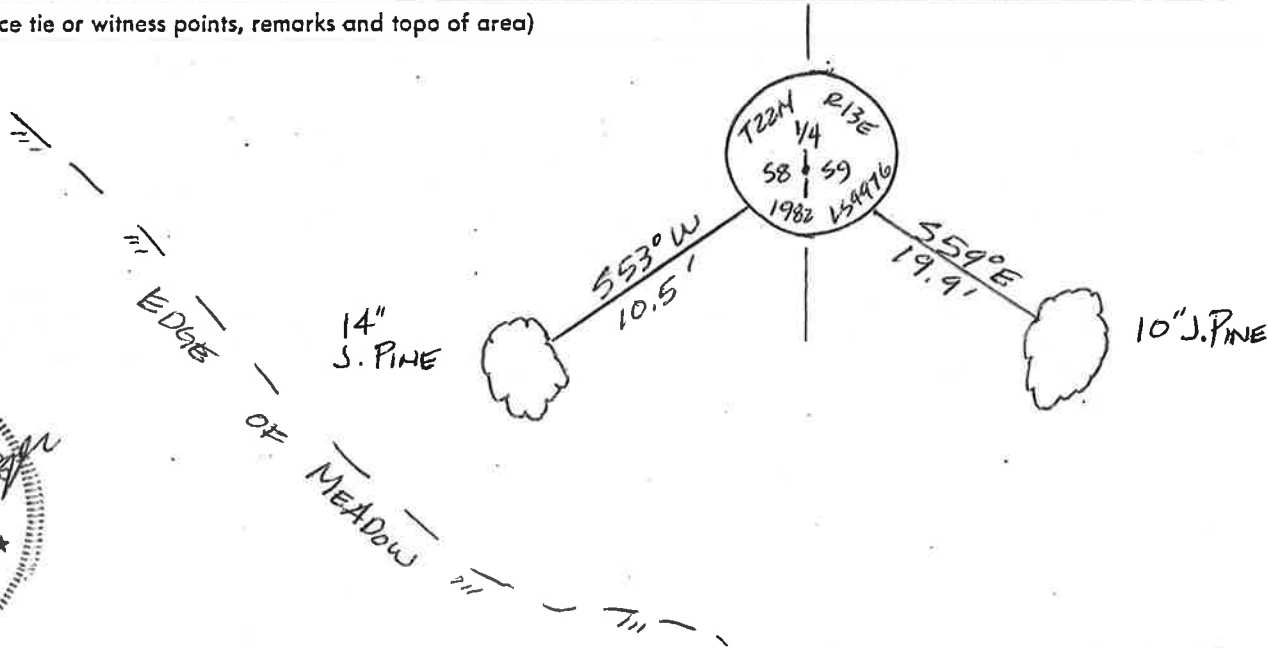
PHYSICAL DESCRIPTION OF MONUMENTS REBUILT OR PERPETUATED

SET: Standard U.S.D.A. Aluminum Pipe with Aluminum Cap 2-1/2"x 30" long 24" in the ground; Set at record distance intersection from found evidence.

SCRIBED: 10" J. Pine Bears S59E, 19.9 ft. marked 1/4 S9 BT w/ Alum. tag LS 4976
14" J. Pine Bears S53W, 10.5 ft. marked 1/4 S8 BT w/ Alum. tag LS 4976

CALIFORNIA COORDINATE SYSTEM ORDER: FIRST SECOND THIRD
STATIONS USED: NGS (USC & GS) STATE COUNTY OTHER STATION _____ STATION _____
ZONE _____ ELEVATION _____ NORTHINGS (Y) _____ EASTINGS (X) _____

SKETCH: (Include reference tie or witness points, remarks and topo of area)



SURVEYOR'S CERTIFICATE

THIS CORNER RECORD WAS PREPARED BY ME OR UNDER MY DIRECTION IN CONFORMANCE WITH THE LAND SURVEYORS ACT ON June 5 1982

SIGNED: Mark D. Filsinger
L.S. or R.C.E. No.: LS 4976

SEAL

COUNTY SURVEYOR'S CERTIFICATE

THE CORNER RECORD WAS RECEIVED June 23 1982 AND EXAMINED AND FILED June 25 1982

BY: Robert J. Smith RCE 30515
TITLE: Assistant Engineer

DOCUMENT No. 22

STATEMENT ON BACK OF SHEET YES NO