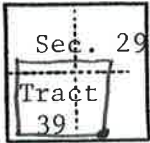


# CORNER RECORD

COUNTY OF Plumas T. 24N R. 6E M.D.B. & MERIDIAN CALIFORNIA

CORNER TYPE GOV'T. CORNER  MEANDER  RANCHO  CONTROL  OTHER   
 CORNER IDENTIFICATION — DATE OF VISIT August 26, 1981



AP4 TR39 1938  
 T24N., R.6E  
 Sec. 29

SOUTHEAST CORNER TRACT 39

CORNER — LEFT AS FOUND  FOUND AND TAGGED  REESTABLISHED OBLITERATED CORNER  REBUILT

**PHYSICAL DESCRIPTION OF CORNER FOUND; EVIDENCE AND METHOD USED TO IDENTIFY OR REESTABLISH**

Found 1" outside diameter iron pipe with 2-1/2" brass disc. stamped U.S. General Land Office 1938 AP4, TR39 - Sec. 29 T24N., R.6E., - Projecting 08" above ground - U.S. General Land Office plat.

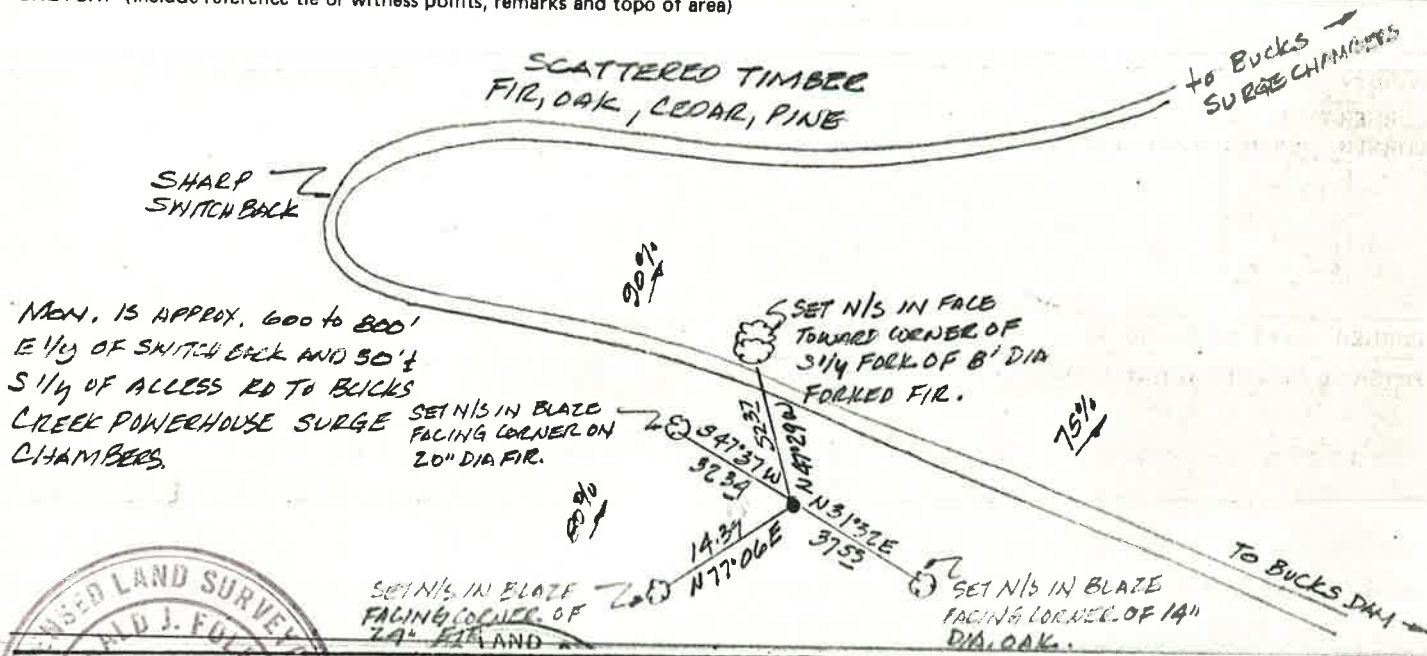
**PHYSICAL DESCRIPTION OF MONUMENTS REBUILT OR PERPETUATED**

CORNER LOCATED BY P.G.&E. SURVEY  
 BUT NOT VERIFIED

PACIFIC GAS AND ELECTRIC CO.  
 LAND DEPT. JOB LD 4840

CALIFORNIA COORDINATE SYSTEM ORDER: FIRST  SECOND  THIRD   
 STATIONS USED: NGS (USC & GS)  STATE  COUNTY  OTHER  STATION \_\_\_\_\_ STATION \_\_\_\_\_  
 ZONE \_\_\_\_\_ ELEVATION \_\_\_\_\_ NORTHINGS (N) \_\_\_\_\_ EASTINGS (E) \_\_\_\_\_

SKETCH: (Include reference tie or witness points, remarks and topo of area)



**SURVEYOR'S CERTIFICATE**

THIS CORNER RECORD WAS PREPARED BY ME OR UNDER MY DIRECTION IN CONFORMANCE WITH THE LAND SURVEYORS ACT ON FEB 18 1982 1982

SIGNED: \_\_\_\_\_

L.S. or R.C.E. No. 3771

SEAL

**COUNTY SURVEYOR'S CERTIFICATE**

THE CORNER RECORD WAS RECEIVED March 26 1982  
 AND EXAMINED AND FILED June 25 1982  
 BY: Ralph J. Hunter RCE 30515  
 TITLE: Assistant Engineer

DOCUMENT No. 24

STATEMENT ON BACK OF SHEET

YES  NO

002-280-