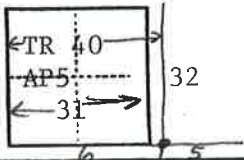


CORNER RECORD

COUNTY OF Plumas T. 23N/24N R. 6E M.D. Meridian CALIFORNIA

CORNER TYPE: GOVT. CORNER MEANDER RANCHO CONTROL OTHER
 CORNER IDENTIFICATION — DATE OF VISIT May 28, 1981



NORTHWEST CORNER, SECTION 5

CORNER — LEFT AS FOUND FOUND AND TAGGED REESTABLISHED OBLITERATED CORNER REBUILT

PHYSICAL DESCRIPTION OF CORNER FOUND; EVIDENCE AND METHOD USED TO IDENTIFY OR REESTABLISH

Found 2" outside diameter pipe with 2-1/2" brass cap stamped U.S. General Land Office 1938 T24N, R6E projecting 0⁸/₈ above ground in rock mound.

TR40	S32
AP5	
S6	S5
T23N,	R6E

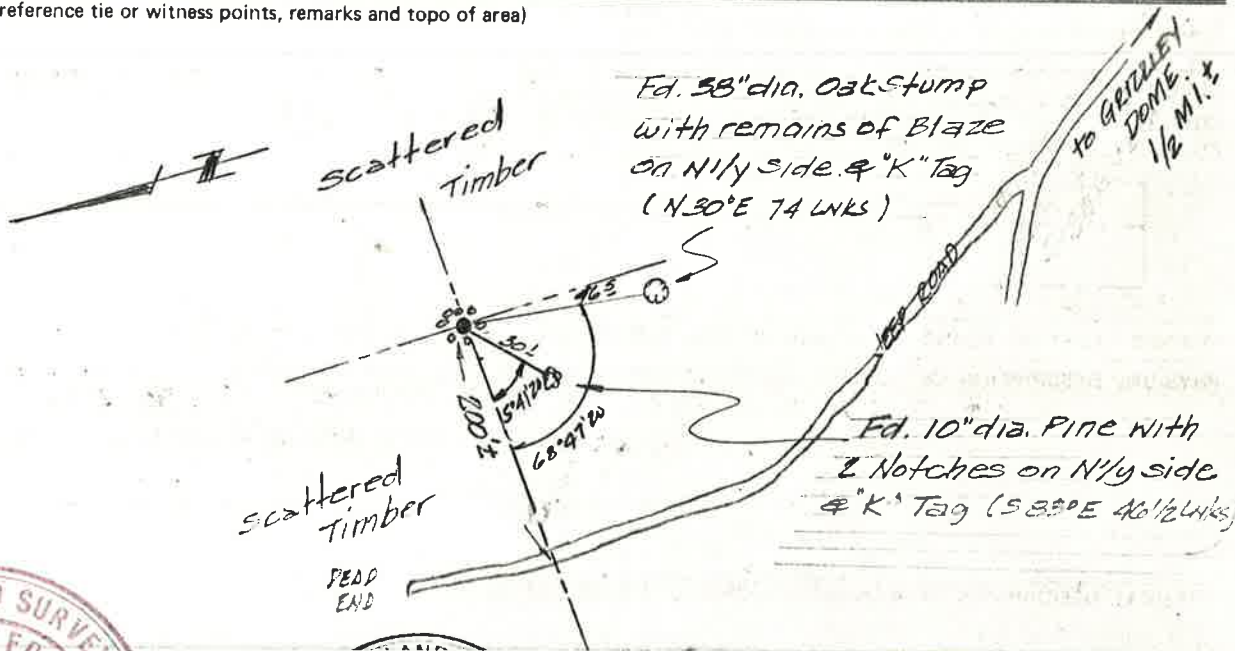
PHYSICAL DESCRIPTION OF MONUMENTS REBUILT OR PERPETUATED

CORNER LOCATED BY P.G.&E. SURVEY
BUT NOT VERIFIED

PACIFIC GAS AND ELECTRIC CO.
LAND DEPT. JOB LD 4840

CALIFORNIA COORDINATE SYSTEM ORDER: FIRST SECOND THIRD
 STATIONS USED: NGS (USC & GS) STATE COUNTY OTHER STATION _____ STATION _____
 ZONE _____ ELEVATION _____ NORTHINGS (N) _____ EASTINGS (E) _____

SKETCH: (Include reference tie or witness points, remarks and topo of area)



SURVEYOR'S CERTIFICATE

THIS CORNER RECORD WAS PREPARED BY ME OR UNDER MY DIRECTION IN CONFORMANCE WITH THE LAND SURVEYORS ACT ON FEB 18 1982 1982

SIGNED: [Signature]

L.S. or R.C.E. No. LS 3771

SEAL

COUNTY SURVEYOR'S CERTIFICATE

THE CORNER RECORD WAS RECEIVED 3-25 1982 AND EXAMINED AND FILED 6-26 1982

BY: Robert J. Hunter RCE 3051

TITLE: Assistant Engineer

DOCUMENT No. 25

STATEMENT ON BACK OF SHEET

002-296-809

YES NO