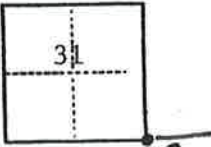


# CORNER RECORD

COUNTY OF Plumas T. 23N/24N R. 6E/6E M.D. M.D. MERIDIAN CALIFORNIA

CORNER TYPE: GOVT. CORNER  MEANDER  RANCHO  CONTROL  OTHER   
 CORNER IDENTIFICATION — DATE OF VISIT 6/2 1981



NORTHWEST CORNER, SECTION 6  
 (23N, R6E, M.D.B. & M.)

CORNER — LEFT AS FOUND  FOUND AND TAGGED  REESTABLISHED OBLITERATED CORNER  REBUILT

**PHYSICAL DESCRIPTION OF CORNER FOUND; EVIDENCE AND METHOD USED TO IDENTIFY OR REESTABLISH**

Found 2" outside diameter iron pipe with 2-1/2" brass cap in rock mound projecting 1.0 foot above ground stamped U.S. General Land Office 1938

T24N	R6E
S31	S32
T23N	R6E
S6	

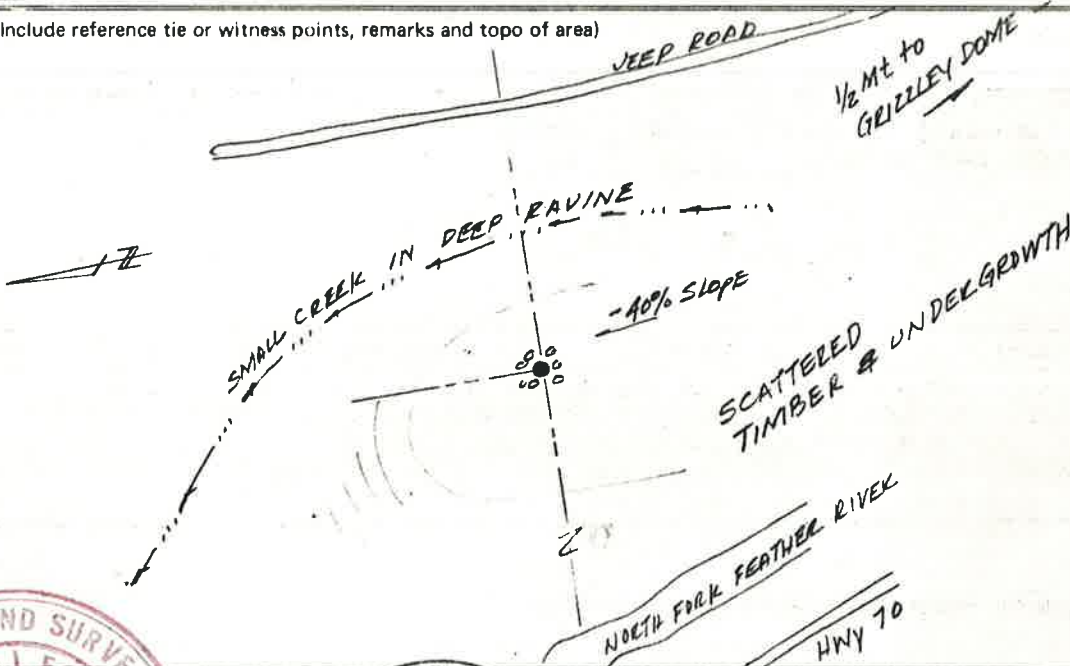
**PHYSICAL DESCRIPTION OF MONUMENTS REBUILT OR PERPETUATED**

CORNER LOCATED BY P.G.&E. SURVEY  
 BUT NOT VERIFIED

PACIFIC GAS AND ELECTRIC CO.  
 LAND DEPT. JOB LD 4840

CALIFORNIA COORDINATE SYSTEM ORDER: FIRST  SECOND  THIRD   
 STATIONS USED: NGS (USC & GS)  STATE  COUNTY  OTHER  STATION \_\_\_\_\_ STATION \_\_\_\_\_  
 ZONE \_\_\_\_\_ ELEVATION \_\_\_\_\_ NORTHINGS (N) \_\_\_\_\_ EASTINGS (E) \_\_\_\_\_

SKETCH: (Include reference tie or witness points, remarks and topo of area)



**SURVEYOR'S CERTIFICATE**

THIS CORNER RECORD WAS PREPARED BY ME OR UNDER MY DIRECTION IN CONFORMANCE WITH THE LAND SURVEYORS ACT ON FEB 18 1982 1982

SIGNED: J. J. Foley

L.S. or R.C.E. No. RS 3791

SEAL

**COUNTY SURVEYOR'S CERTIFICATE**

THE CORNER RECORD WAS RECEIVED 3-25 1982 AND EXAMINED AND FILED 6-25 1982  
 BY: Robert J. Shuster RCE 30515  
 TITLE: Assistant Engineer

DOCUMENT No. 26

STATEMENT ON BACK OF SHEET

YES  NO

002-290-009