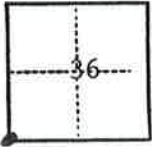


CORNER RECORD

COUNTY OF Plumas T. 24N R. 5E M.D.B. & MERIDIAN CALIFORNIA

CORNER TYPE: GOV'T. CORNER MEANDER RANCHO CONTROL OTHER
 CORNER IDENTIFICATION — DATE OF VISIT 4/30 1981



SOUTHWEST CORNER, SECTION 36

CORNER — LEFT AS FOUND FOUND AND TAGGED REESTABLISHED OBLITERATED CORNER REBUILT

PHYSICAL DESCRIPTION OF CORNER FOUND; EVIDENCE AND METHOD USED TO IDENTIFY OR REESTABLISH

Found 2-1/2" brass cap on 2" iron pipe, 0⁷/₈ high, in rock mound stamped U.S. General Land Office Survey

T.24N.	R.5E.
S35	S36
T.23N., R.5E	
S1	
1938	

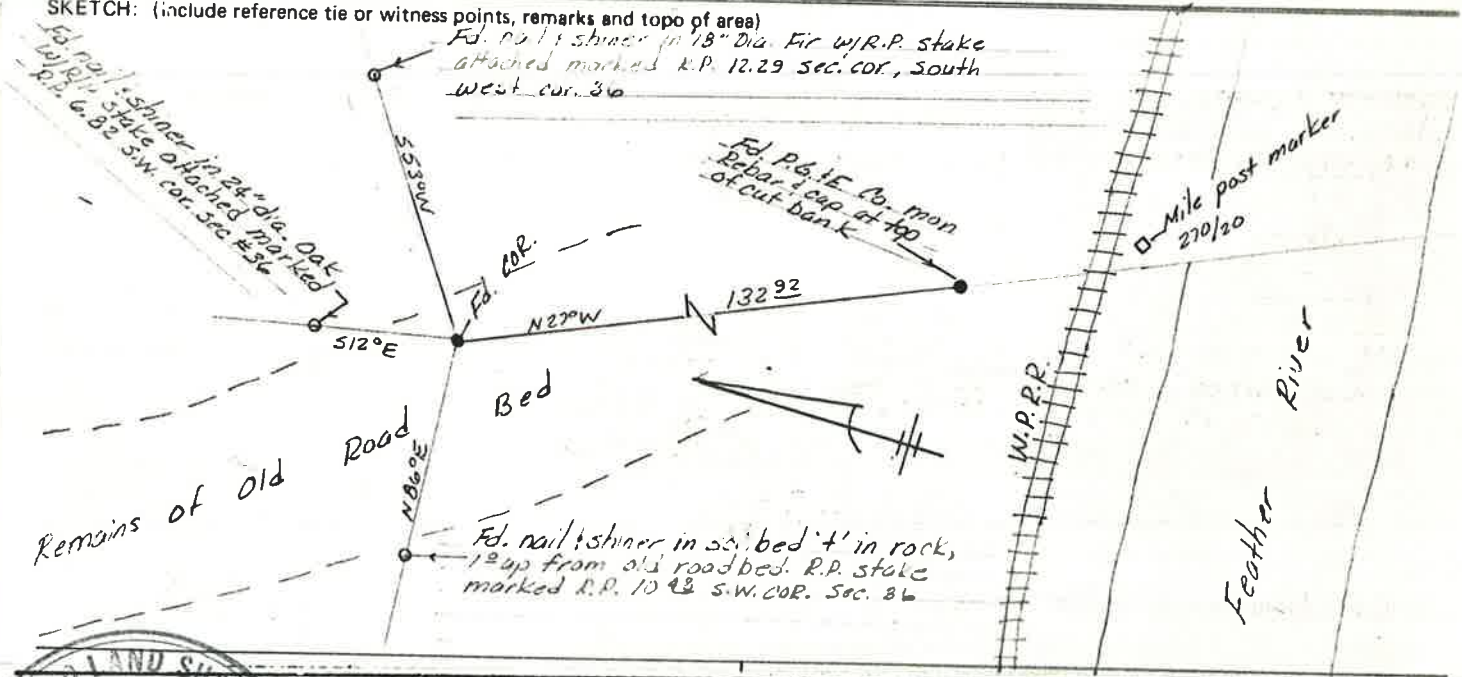
PHYSICAL DESCRIPTION OF MONUMENTS REBUILT OR PERPETUATED

CORNER LOCATED BY P.G.&E. SURVEY
 BUT NOT VERIFIED

PACIFIC GAS AND ELECTRIC CO.
 LAND DEPT. JOB LD 4840

CALIFORNIA COORDINATE SYSTEM ORDER: FIRST SECOND THIRD
 STATIONS USED: NGS (USC & GS) STATE COUNTY OTHER STATION _____
 ZONE _____ ELEVATION _____ NORTHINGS (Y) _____ EASTINGS (X) _____

SKETCH: (include reference tie or witness points, remarks and topo of area)



SURVEYOR'S CERTIFICATE

THIS CORNER RECORD WAS PREPARED BY ME OR UNDER MY DIRECTION IN CONFORMANCE WITH THE LAND SURVEYORS ACT ON FEB 11 1982 1982
 No. 3771

SIGNED: _____

L.S. or R.C.E. No. _____

SEAL

COUNTY SURVEYOR'S CERTIFICATE

THE CORNER RECORD WAS RECEIVED March 25 1982
 AND EXAMINED AND FILED June 25 1982
 BY: Robert S. Ehlert REC 3055
 TITLE: Assistant Engineer

DOCUMENT No. 27

STATEMENT ON BACK OF SHEET

YES NO

002-280