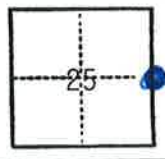


# CORNER RECORD

COUNTY OF Plumas T. 25 N. R. 8E, 9E, M. D. B. & MERIDIAN CALIFORNIA

CORNER TYPE: GOV'T. CORNER  MEANDER  RANCHO  CONTROL  OTHER   
 CORNER IDENTIFICATION — DATE OF VISIT May 28, 19 82



30 West 1/4 Corner Section 30  
 T.25N., R.9E., M.D.B.& M.

CORNER — LEFT AS FOUND  FOUND AND TAGGED  REESTABLISHED OBLITERATED CORNER  REBUILT

**PHYSICAL DESCRIPTION OF CORNER FOUND; EVIDENCE AND METHOD USED TO IDENTIFY OR REESTABLISH**

Found 2 1/4" outside diameter Iron Pipe with 3 1/4" brass cap stamped.

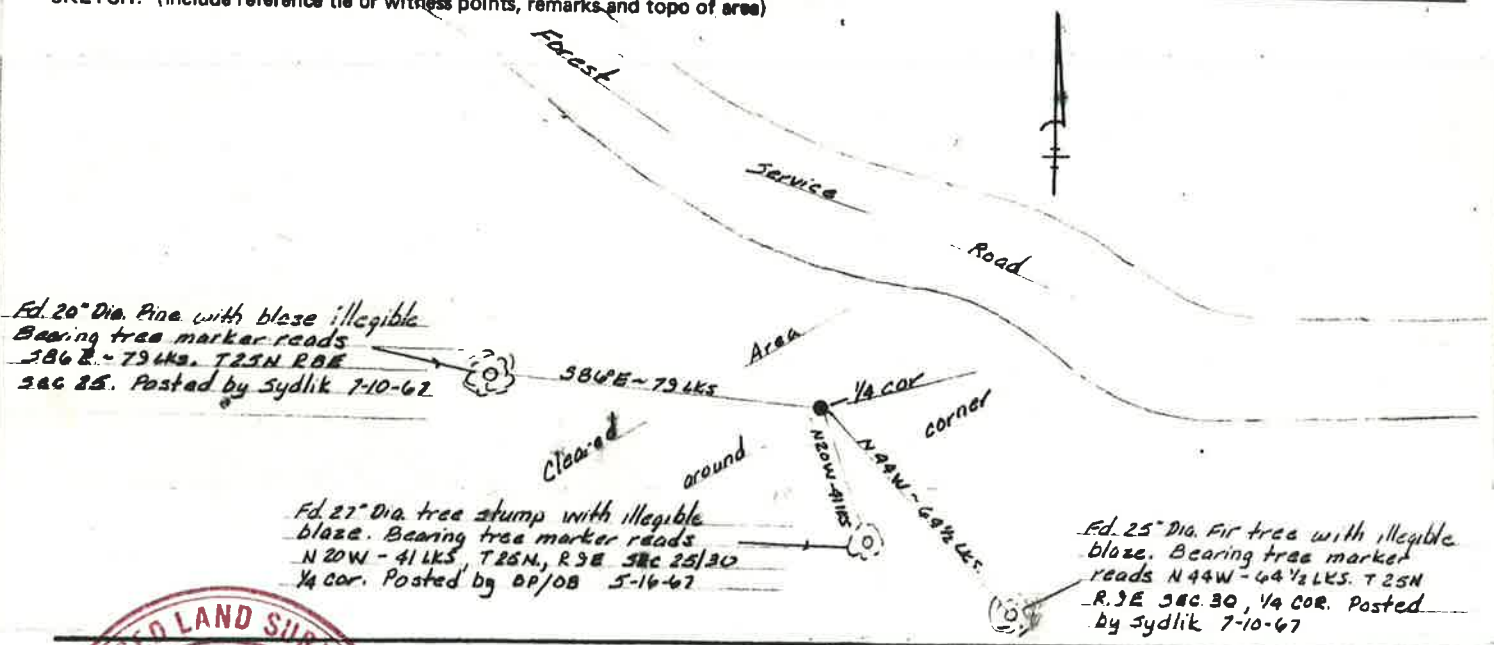


**PHYSICAL DESCRIPTION OF MONUMENTS REBUILT OR PERPETUATED:**

CORNER LOCATED BY P.G.&E. SURVEY PACIFIC GAS AND ELECTRIC CO.  
 BUT NOT VERIFIED LAND DEPT. JOB LD 4535

CALIFORNIA COORDINATE SYSTEM ORDER: FIRST  SECOND  THIRD   
 STATIONS USED: NGS (USC & GS)  STATE  COUNTY  OTHER  STATION \_\_\_\_\_ STATION \_\_\_\_\_  
 ZONE \_\_\_\_\_ ELEVATION \_\_\_\_\_ NORTHINGS (Y) \_\_\_\_\_ EASTINGS (X) \_\_\_\_\_

**SKETCH: (Include reference tie or witness points, remarks and topo of area)**



**SURVEYOR'S CERTIFICATE**  
 THIS CORNER RECORD WAS PREPARED BY ME OR UNDER MY DIRECTION IN CONFORMANCE WITH THE LAND SURVEYORS ACT ON No. 377 JUN 18 19 82  
 SIGNED: [Signature]  
 L.S. or R.C.E. No. 3791

SEAL

**COUNTY SURVEYOR'S CERTIFICATE**  
 THE CORNER RECORD WAS RECEIVED July 1 19 82  
 AND EXAMINED AND FILED July 1 19 82  
 BY: R. Tom Shuster RCE 30515  
 TITLE: Assistant Engineer

DOCUMENT No. 28

STATEMENT ON BACK OF SHEET YES  NO

002-240-