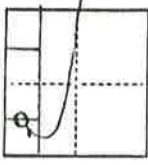


CORNER RECORD

COUNTY OF PLUMAS T. 26N R. 10E M.D.B. CALIFORNIA MERIDIAN

CORNER TYPE: GOVT. CORNER MEANDER RANCHO CONTROL OTHER

CORNER IDENTIFICATION - DATE OF VISIT 12-30 1982



Section 5 Found Monument

CORNER - LEFT AS FOUND FOUND AND TAGGED REESTABLISHED OBLITERATED CORNER REBUILT

PHYSICAL DESCRIPTION OF CORNER FOUND; EVIDENCE AND METHOD USED TO IDENTIFY OR REESTABLISH

Found 1" I.P. tagged RCE 7294 at S.E. Corner of 1/2 of Lot 4 per 2RS 36. Location verified by reference to next 6 monuments to North per BPM 47.

PHYSICAL DESCRIPTION OF MONUMENTS REBUILT OR PERPETUATED

Set 1/2" rebar with cap RCE 13225 at N.E. Corner of Perry Property per 296 OR 548. Reference also 231 OR 388 (Rogers).

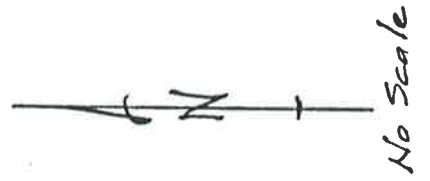
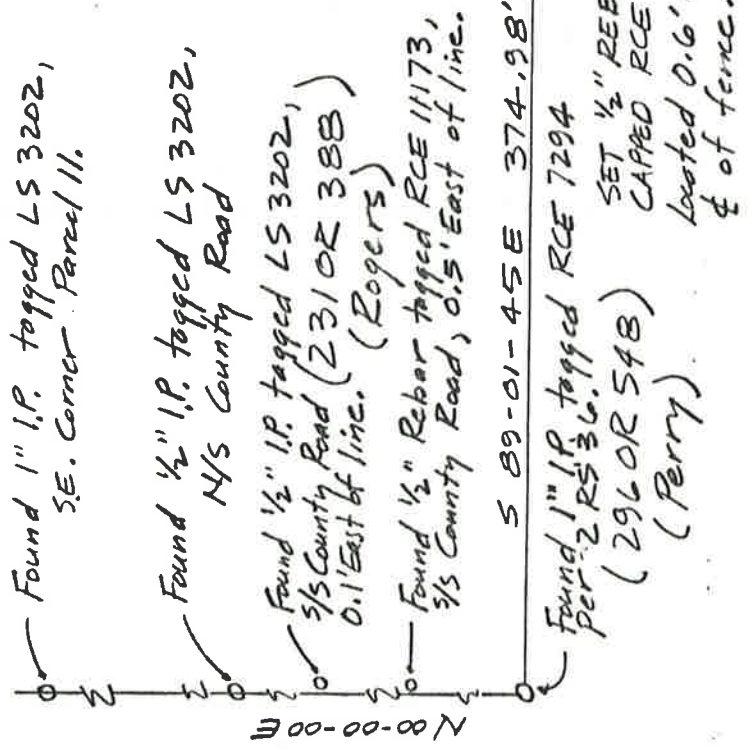
CALIFORNIA COORDINATE SYSTEM ORDER: FIRST N.A. SECOND THIRD STATION EASTINGS (X)

STATIONS USED: NGS (USC & GS) STATE COUNTY OTHER NORTHINGS (Y)

ZONE ELEVATION

(Fold)

SKETCH: (Include reference tie or witness points, remarks and topo of area)

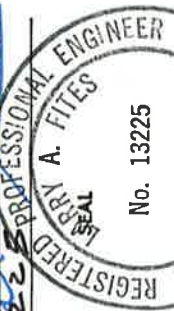


Existing "New" Fence on West portion of Lane

SURVEYOR'S CERTIFICATE

THIS CORNER RECORD WAS PREPARED BY ME OR UNDER MY DIRECTION IN CONFORMANCE WITH THE LAND SURVEYORS ACT ON December 30 1982

SIGNED: [Signature] REGISTERED PROFESSIONAL ENGINEER



COUNTY SURVEYOR'S CERTIFICATE

THE CORNER RECORD WAS RECEIVED Jan 19 83 AND EXAMINED AND FILED Jan 6 19 83

BY: Tom Shuster RCE 30515 TITLE: Assistant Engineer

DOCUMENT No. 30

STATEMENT ON BACK OF SHEET

YES NO

NO X