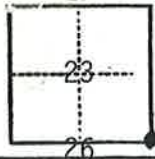


CORNER RECORD

COUNTY OF Plumas T. 25 N. R. 8 E. M.D.B.& MERIDIAN CALIFORNIA

CORNER TYPE: GOVT. CORNER MEANDER RANCHO CONTROL OTHER

CORNER IDENTIFICATION — DATE OF VISIT May 24, 1982



Southeast corner section 23
Northwest corner section 25

CORNER — LEFT AS FOUND FOUND AND TAGGED REESTABLISHED OBLITERATED CORNER REBUILT

PHYSICAL DESCRIPTION OF CORNER FOUND; EVIDENCE AND METHOD USED TO IDENTIFY OR REESTABLISH

1 1/4" outside diameter iron pipe in rock mound 0' 4" above ground.

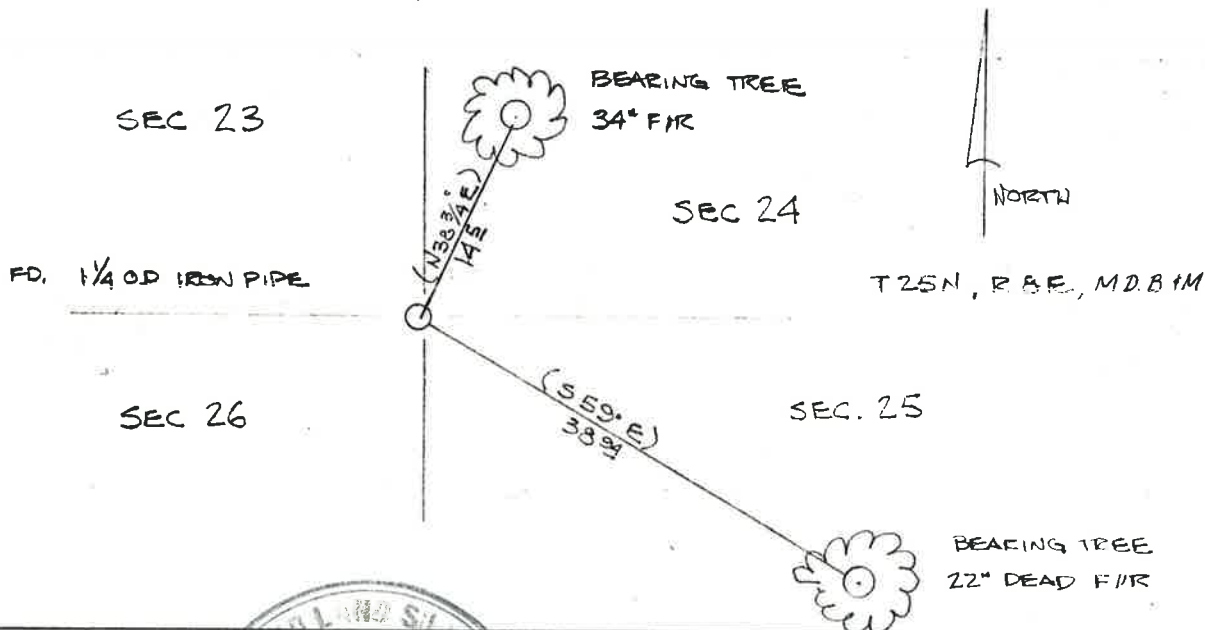
PHYSICAL DESCRIPTION OF MONUMENTS REBUILT OR PERPETUATED

CORNER LOCATED BY P.G.&E. SURVEY
DATE NOT VERIFIED

PACIFIC GAS AND ELECTRIC CO.
LAND DEPT. JOB LD 4840

CALIFORNIA COORDINATE SYSTEM ORDER: FIRST SECOND THIRD
STATIONS USED: NGS (USC & GS) STATE COUNTY OTHER STATION _____ STATION _____
ZONE _____ ELEVATION _____ NORTHINGS (Y) _____ EASTINGS (X) _____

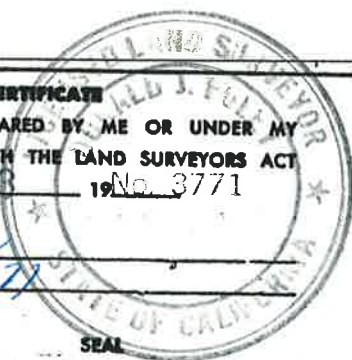
SKETCH: (Include reference tie or witness points, remarks and topo of area)



SURVEYOR'S CERTIFICATE

THIS CORNER RECORD WAS PREPARED BY ME OR UNDER MY DIRECTION IN CONFORMANCE WITH THE LAND SURVEYORS ACT ON JAN 11, 1988 No. 3771

SIGNED: [Signature]
L.S. or R.C.E. No.: 28377



COUNTY SURVEYOR'S CERTIFICATE

THE CORNER RECORD WAS RECEIVED 1-17 1982 AND EXAMINED AND FILED 1-17 1983

BY: R. Tom Shuster
TITLE: Assistant Engineer RCE 2051

DOCUMENT No. 31

STATEMENT ON BACK OF SHEET

002-240 -

YES NO