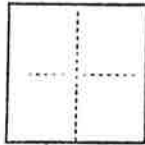


CORNER RECORD

COUNTY OF PLUMAS T. 27 N. R. 9 E. MOUNT DIABLO MERIDIAN CALIFORNIA
 CORNER TYPE: GOV'T. CORNER MEANDER RANCHO CONTROL OTHER
 CORNER IDENTIFICATION — DATE OF VISIT SEPT. 5 19 83



CORNER — LEFT AS FOUND FOUND AND TAGGED REESTABLISHED OBLITERATED CORNER REBUILT

PHYSICAL DESCRIPTION OF CORNER FOUND; EVIDENCE AND METHOD USED TO IDENTIFY OR REESTABLISH

REESTABLISHED SW CORNER OF PARCEL 1 OF 8 P.M. 28 BY THE FOLLOWING PROCEDURE:
 1) ESTABLISHED COMPUTED LOCATION OF THE SE CORNER OF PARCEL 1 OF 8 P.M. 28 BY SINGLE PROPORTION BETWEEN FOUND CORNERS;
 2) ESTABLISHED AND SET SW CORNER OF PARCEL 1 OF 8 P.M. 28 BY SINGLE PROPORTION

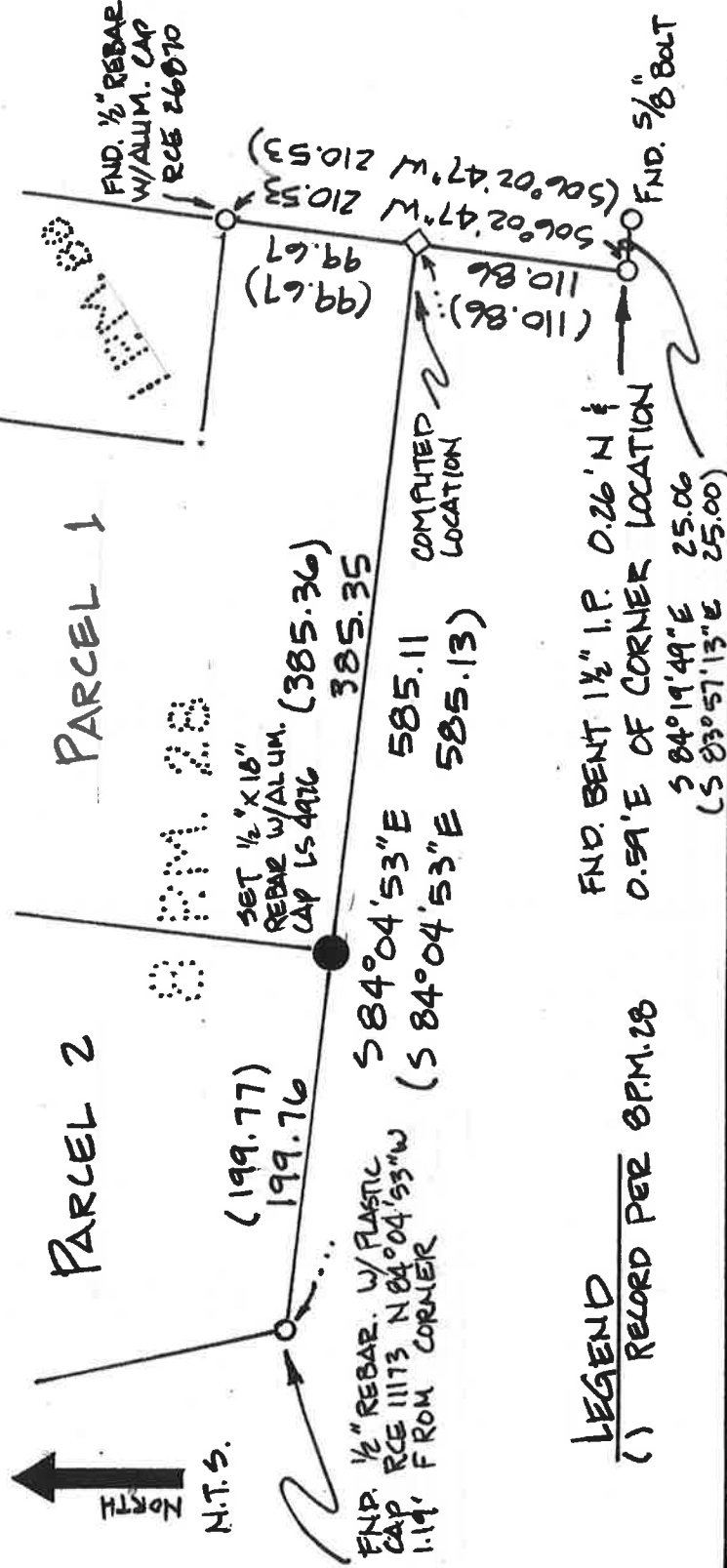
PHYSICAL DESCRIPTION OF MONUMENTS REBUILT OR PERPETUATED

SET 1/2" X 10" REBAR WITH ALUMINUM CAP STAMPED LS. 4976

CALIFORNIA COORDINATE SYSTEM ORDER: FIRST NA SECOND THIRD
 STATIONS USED: NGS (USC & GS) STATE COUNTY OTHER STATION _____ STATION _____
 ZONE _____ ELEVATION _____ NORTHINGS (Y) _____ EASTINGS (X) _____

(Fold)

SKETCH: (Include reference tie or witness points, remarks and topo of area)



SURVEYOR'S CERTIFICATE

THIS CORNER RECORD WAS REBUILT BY ME OR UNDER MY DIRECTION IN CONFORMANCE WITH THE LAND SURVEYORS ACT ON SEPT. 19 83

SIGNED: Mark D. Filinger
 L.S. or R.C.E. No. 1 _____ No. 4976

COUNTY SURVEYOR'S CERTIFICATE

THE CORNER RECORD WAS RECEIVED SEPT 30 19 83 AND EXAMINED AND FILED Oct. 3 19 83
 BY: Tom Schuster
 TITLE: Asst. Engineer

DOCUMENT No. 32
 STATEMENT ON BACK OF SHEET

YES NO

002-240

