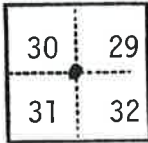


CORNER RECORD

COUNTY OF Plumas T. 25 N. R. 9 E. M.D.B. & MERIDIAN CALIFORNIA

CORNER TYPE: GOV'T. CORNER MEANDER RANCHO CONTROL OTHER
 CORNER IDENTIFICATION — DATE OF VISIT June 30, 1982



Northwest corner Section 32

CORNER — LEFT AS FOUND FOUND AND TAGGED REESTABLISHED OBLITERATED CORNER REBUILT

PHYSICAL DESCRIPTION OF CORNER FOUND, EVIDENCE AND METHOD USED TO IDENTIFY OR REESTABLISH

Found 3 1/4" brass cap on 2 1/2" outside diameter iron pipe stampled in Rock Mound

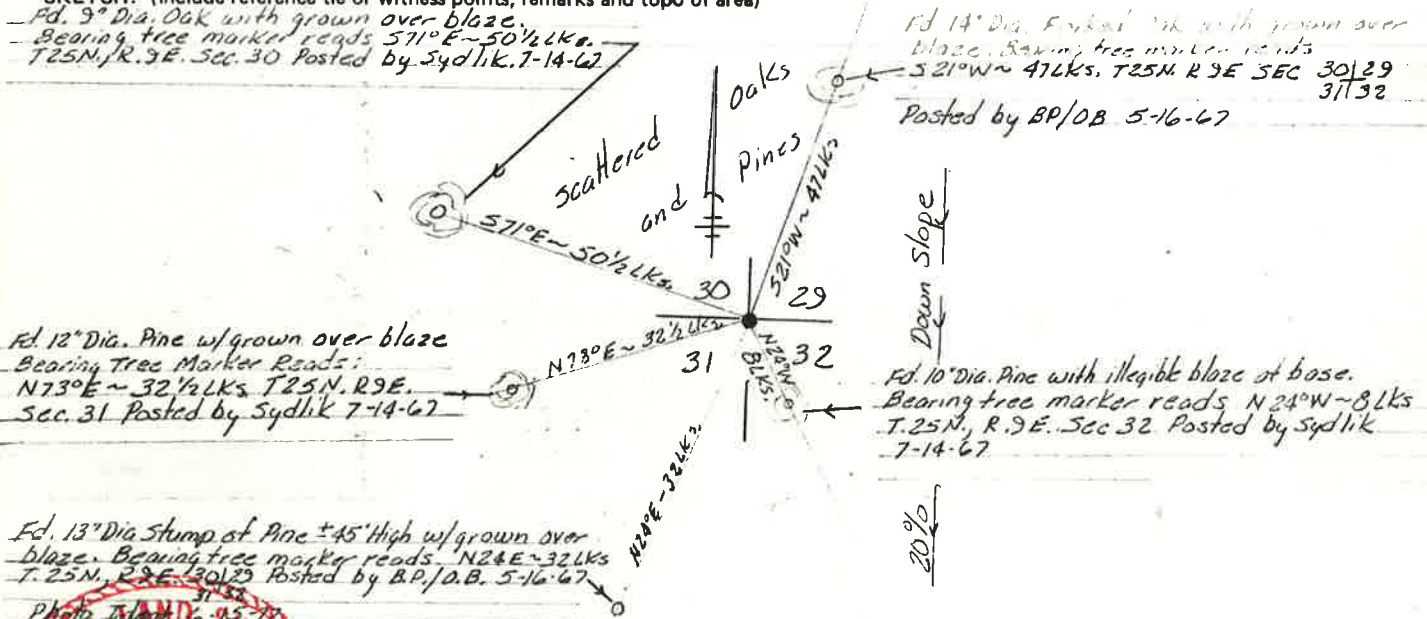


PHYSICAL DESCRIPTION OF MONUMENTS REBUILT OR PERPETUATED

CORNER LOCATED BY P.G.&E. SURVEY PACIFIC GAS AND ELECTRIC CO.
 BUT NOT VERIFIED LAND DEPT. JOB 104535

CALIFORNIA COORDINATE SYSTEM ORDER: FIRST SECOND THIRD
 STATIONS USED: NGS (USC & GS) STATE COUNTY OTHER STATION _____ STATION _____
 ZONE _____ ELEVATION _____ NORTHINGS (N) _____ EASTINGS (E) _____

SKETCH: (Include reference tie or witness points, remarks and topo of area)



SURVEYOR'S CERTIFICATE
 THIS CORNER RECORD WAS PREPARED BY ME OR UNDER MY DIRECTION IN CONFORMANCE WITH THE LAND SURVEYORS ACT ON 8/12 19 82
 SIGNED: Peter I. Jones
 L.S. or R.C.E. No. 4575

SEAL

COUNTY SURVEYOR'S CERTIFICATE
 THE CORNER RECORD WAS RECEIVED _____ 19 _____
 AND EXAMINED AND FILED 8-27 19 82
 BY: J. Brack
 TITLE: COUNTY ENGINEER

DOCUMENT No. 37

STATEMENT ON BACK OF SHEET YES NO