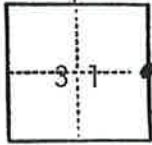


CORNER RECORD

COUNTY OF Plumas T. 25 N. R. 9 E. M.D.B. & MERIDIAN CALIFORNIA

CORNER TYPE: GOV'T. CORNER MEANDER RANCHO CONTROL OTHER

CORNER IDENTIFICATION — DATE OF VISIT June 29, 1982



32 West 1/4 corner section 32

CORNER — LEFT AS FOUND FOUND AND TAGGED REESTABLISHED OBLITERATED CORNER REBUILT

PHYSICAL DESCRIPTION OF CORNER FOUND; EVIDENCE AND METHOD USED TO IDENTIFY OR REESTABLISH

Found 3 1/4" Brass Cap on 2 1/2" outside diameter iron pipe stamped In Rock Mound.

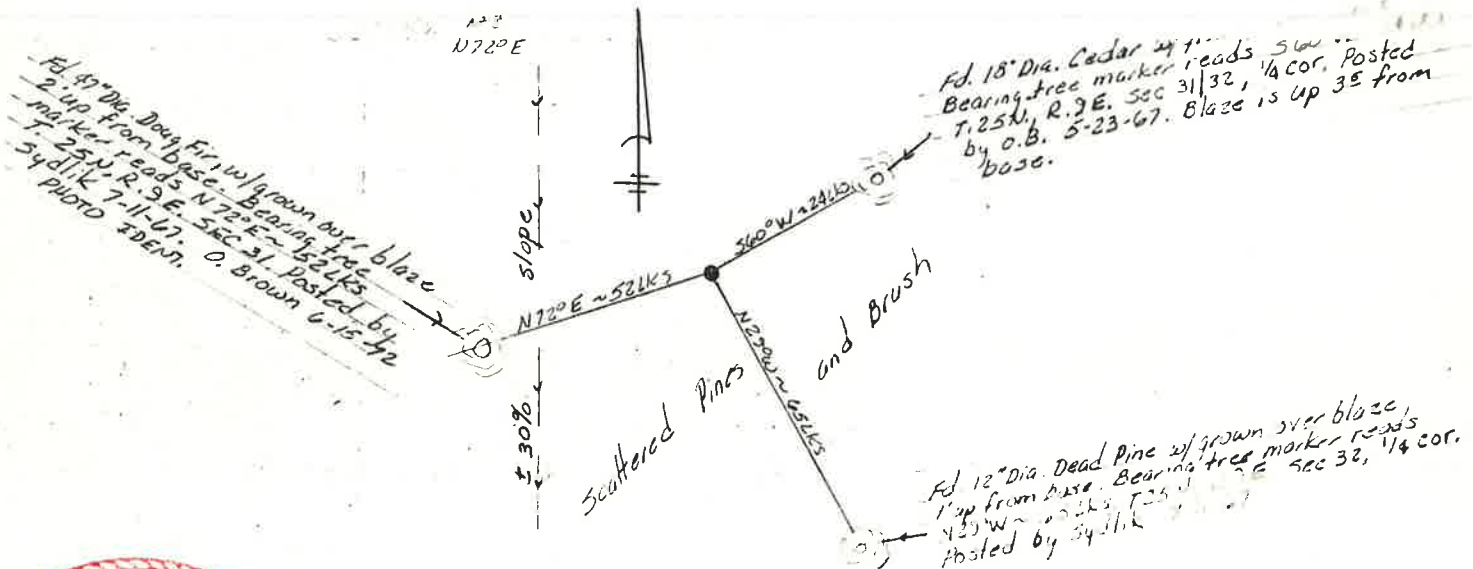


PHYSICAL DESCRIPTION OF MONUMENTS REBUILT OR PERPETUATED

CORNER LOCATED BY P.G.&E. SURVEY PACIFIC GAS AND ELECTRIC CO. BUT NOT VERIFIED LAND DEPT. JOB LD 4535

CALIFORNIA COORDINATE SYSTEM ORDER: FIRST SECOND THIRD
 STATIONS USED: NGS (USC & GS) STATE COUNTY OTHER STATION _____ STATION _____
 ZONE _____ ELEVATION _____ NORTHINGS (Y) _____ EASTINGS (X) _____

SKETCH: (Include reference tie or witness points, remarks and topo of area)



SURVEYOR'S CERTIFICATE

THIS CORNER RECORD WAS PREPARED BY ME OR UNDER MY DIRECTION IN CONFORMANCE WITH THE LAND SURVEYORS ACT ON 8/12 1982

4575

SIGNED: Peter I. Johnson

L.S. or R.C.E. No. 4575

SEAL

COUNTY SURVEYOR'S CERTIFICATE

THE CORNER RECORD WAS RECEIVED _____ 19____ AND EXAMINED AND FILED B-27 1982

BY: L. J. Brock

TITLE: County Engineer

DOCUMENT No. 38

STATEMENT ON BACK OF SHEET

YES NO