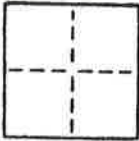


CORNER RECORD

COUNTY OF PLUMAS T. 28N R. 9E M.D. MERIDIAN CALIFORNIA

CORNER TYPE: GOVT. CORNER MEANDER RANCHO CONTROL OTHER

CORNER IDENTIFICATION — DATE OF VISIT 3/3 19 86



IN SEC 21
REF. INDIAN HILLS SUBD. NO. III (1 MAPS ATTACH 56)
& PARCEL MAP 3-80

CORNER — LEFT AS FOUND FOUND AND TAGGED REESTABLISHED OBLITERATED CORNER REBUILT SEE SKETCH

PHYSICAL DESCRIPTION OF CORNER FOUND; EVIDENCE AND METHOD USED TO IDENTIFY OR REESTABLISH

SEE SKETCH (TRANSIT & CHAIN)

PHYSICAL DESCRIPTION OF MONUMENTS REBUILT OR PERPETUATED

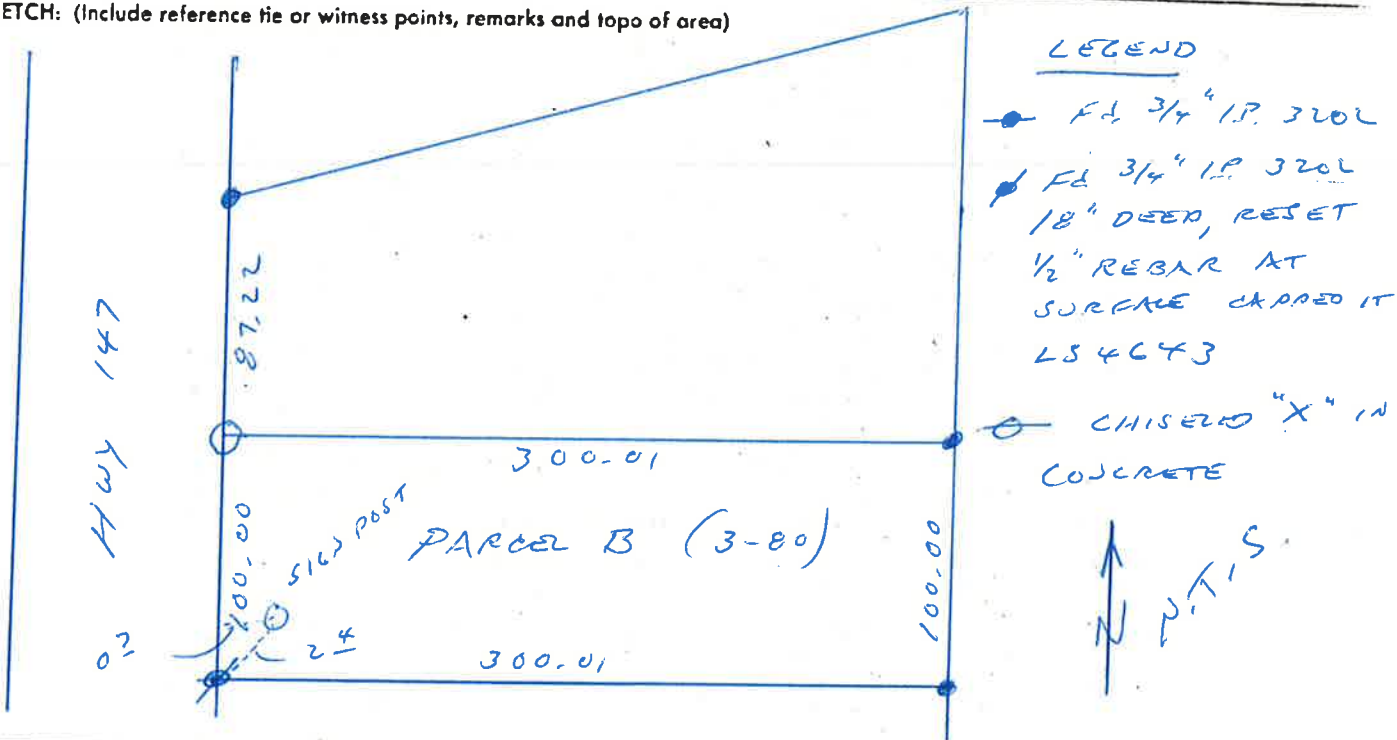
SEE SKETCH

CALIFORNIA COORDINATE SYSTEM ORDER: FIRST SECOND THIRD

STATIONS USED: NGS (USC & GS) STATE COUNTY OTHER STATION _____ STATION _____

ZONE _____ ELEVATION _____ NORTHINGS (Y) _____ EASTINGS (X) _____

SKETCH: (Include reference tie or witness points, remarks and topo of area)



SURVEYOR'S CERTIFICATE

THIS CORNER RECORD WAS PREPARED BY ME OR UNDER MY DIRECTION IN CONFORMANCE WITH THE LAND SURVEYORS ACT ON 3/3 19 86

SIGNED: [Signature]

L.S. or R.C.E. No.: LS 4643



COUNTY SURVEYOR'S CERTIFICATE

THE CORNER RECORD WAS RECEIVED 3-5 19 86 AND EXAMINED AND FILED 3-6 19 86

BY: Tom Senter

TITLE: Asst Engineer

DOCUMENT No. 39

STATEMENT ON BACK OF SHEET

YES NO

001-180-