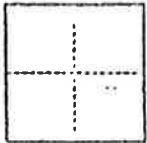


CORNER RECORD

COUNTY OF Plumas T. 24 N P. 10 E MOUNT DIABLO MERIDIAN CALIFORNIA

CORNER TYPE: GOV'T. CORNER MEANDER RANCHO CONTROL OTHER
 CORNER IDENTIFICATION — DATE OF VISIT DEC. 5, 1984



SEE SKETCH

CORNER — LEFT AS FOUND FOUND AND TAGGED REESTABLISHED OBLITERATED CORNER REBUILT

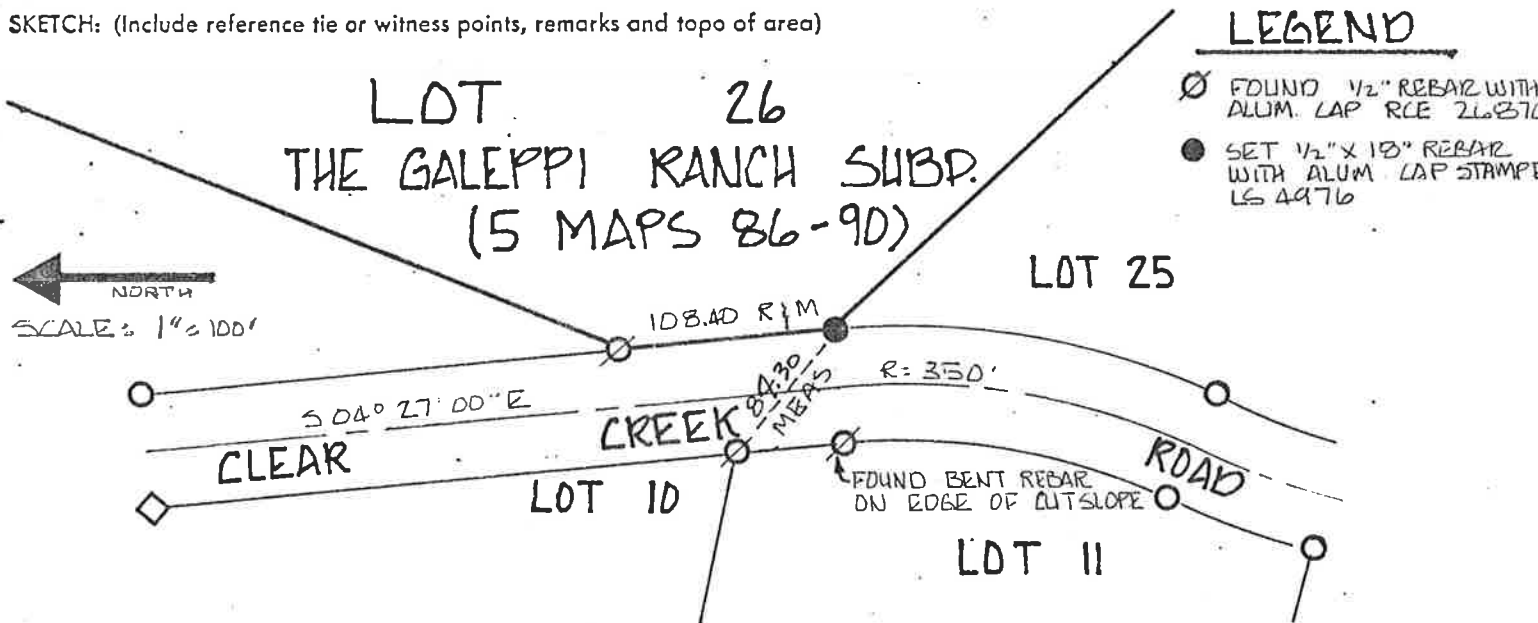
PHYSICAL DESCRIPTION OF CORNER FOUND; EVIDENCE AND METHOD USED TO IDENTIFY OR REESTABLISH
 FOUND REBAR AND CAP BENT ON THE GROUND. REESTABLISHED FROM ORIGINAL CONTROL TRAVERSE UTILIZING ORIGINAL CORNER SETTING CALCULATIONS. CHECKED GET FROM FOUND ORIGINAL CORNERS AS NOTED; ON SKETCH.

PHYSICAL DESCRIPTION OF MONUMENTS REBUILT OR PERPETUATED

SET 1/2" X 1 1/8" REBAR W/ ALUMINUM LAP STAMPED "LS 4976"

CALIFORNIA COORDINATE SYSTEM ORDER: FIRST SECOND THIRD
 STATIONS USED: NGS (USC & GS) STATE COUNTY OTHER STATION _____ STATION _____
 ZONE _____ ELEVATION _____ NORTHINGS (Y) _____ EASTINGS (X) _____

SKETCH: (Include reference tie or witness points, remarks and topo of area)



SURVEYOR'S CERTIFICATE
 THIS CORNER RECORD WAS PREPARED AND RECEIVED UNDER MY DIRECTION IN CONFORMANCE WITH THE LAND SURVEYORS ACT ON DECEMBER 5 1984
 SIGNED: Mark D. Filinger
 L.S. or R.C.E. No.: LS 4976



COUNTY SURVEYOR'S CERTIFICATE
 THE CORNER RECORD WAS RECEIVED _____ 19____
 AND EXAMINED AND FILED 3-6-1986
 BY: Tom Shute
 TITLE: Asst Engineer
 DOCUMENT No. 52
 STATEMENT ON BACK OF SHEET

YES NO