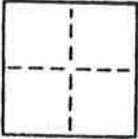


# CORNER RECORD

COUNTY OF PLUMAS T. 28N R. 8E M.D. M.D. MERIDIAN CALIFORNIA

CORNER TYPE: GOV'T. CORNER  MEANDER  RANCHO  CONTROL  OTHER

CORNER IDENTIFICATION — DATE OF VISIT FEB 27 19 86



LOT 4 PARCEL CORNERS, PTN. SE 1/4, SE 1/4 SECTION 18 — REF. BLOCK 5 LAKE ALMAJOR PENINSULA UNIT #1

CORNER — LEFT AS FOUND  FOUND AND TAGGED  REESTABLISHED  OBLITERATED CORNER  REBUILT

PHYSICAL DESCRIPTION OF CORNER FOUND; EVIDENCE AND METHOD USED TO IDENTIFY OR REESTABLISH

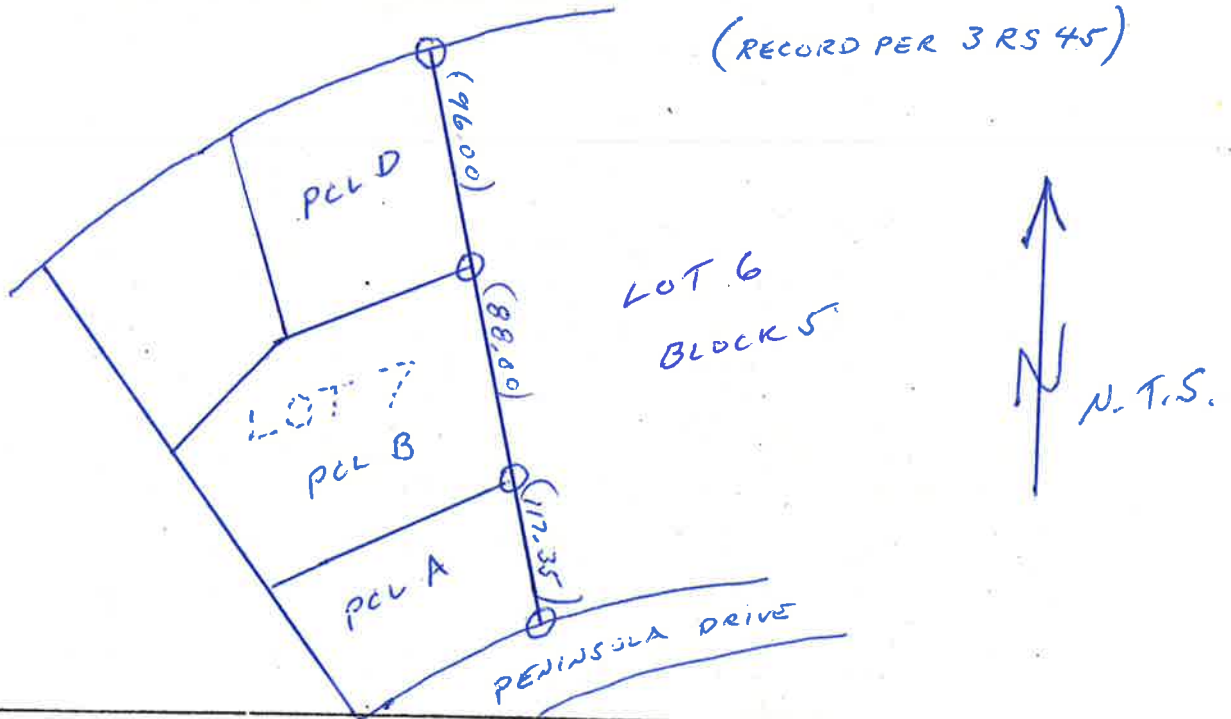
FD. ORIGINAL MONUMENTS PER. BOOK 1 MAPS PAGE 51 & RECORD OF SURVEY PER 3 MAPS PAGE 45. REFERENCED SAID MONUMENTS FOR REPLACEMENT AFTER UNDER GROUND PIPE LINE CONSTRUCTION (SEE SKETCH)

PHYSICAL DESCRIPTION OF MONUMENTS REBUILT OR PERPETUATED

SET 1/2 REBAR CAPPED LS 4643

CALIFORNIA COORDINATE SYSTEM ORDER: FIRST  SECOND  THIRD   
 STATIONS USED: NGS (USC & GS)  STATE  COUNTY  OTHER  STATION \_\_\_\_\_ STATION \_\_\_\_\_  
 ZONE \_\_\_\_\_ ELEVATION \_\_\_\_\_ NORTHINGS (Y) \_\_\_\_\_ EASTINGS (X) \_\_\_\_\_

SKETCH: (Include reference tie or witness points, remarks and topo of area)



### SURVEYOR'S CERTIFICATE

THIS CORNER RECORD WAS PREPARED BY ME OR UNDER MY DIRECTION IN CONFORMANCE WITH THE LAND SURVEYORS ACT ON FEB 28

SIGNED: Stephen H. Schmidt

L.S. or R.C.E. No.: LS 4643



### COUNTY SURVEYOR'S CERTIFICATE

THE CORNER RECORD WAS RECEIVED 3-5 1986 AND EXAMINED AND FILED 3-6 1986

BY: Tom Smith

TITLE: Asst Engineer

DOCUMENT No. 53

STATEMENT ON BACK OF SHEET

YES  NO