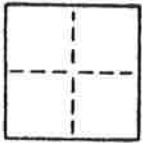


# CORNER RECORD

COUNTY OF PLUMAS T. 28 N R. 8 E M.D. \_\_\_\_\_ MERIDIAN CALIFORNIA  
 CORNER TYPE: GOVT. CORNER  MEANDER  RANCHO  CONTROL  OTHER  IN SECTION 20  
 CORNER IDENTIFICATION - DATE OF VISIT 3/20 1986



LAKE ALMAJOR HOMESITES UNIT No. 1 (MAPS PAGE 14)  
 LOT 54  
 SEE SKETCH

CORNER - LEFT AS FOUND  FOUND AND TAGGED  REESTABLISHED OBLITERATED CORNER  REBUILT

PHYSICAL DESCRIPTION OF CORNER FOUND; EVIDENCE AND METHOD USED TO IDENTIFY OR REESTABLISH

Fd. 1/2" I.P. NO TAG SEE SKETCH  
 TRANSIT & CHAIN

PHYSICAL DESCRIPTION OF MONUMENTS REBUILT OR PERPETUATED

1/2" REBAR CAPPED LS 4643

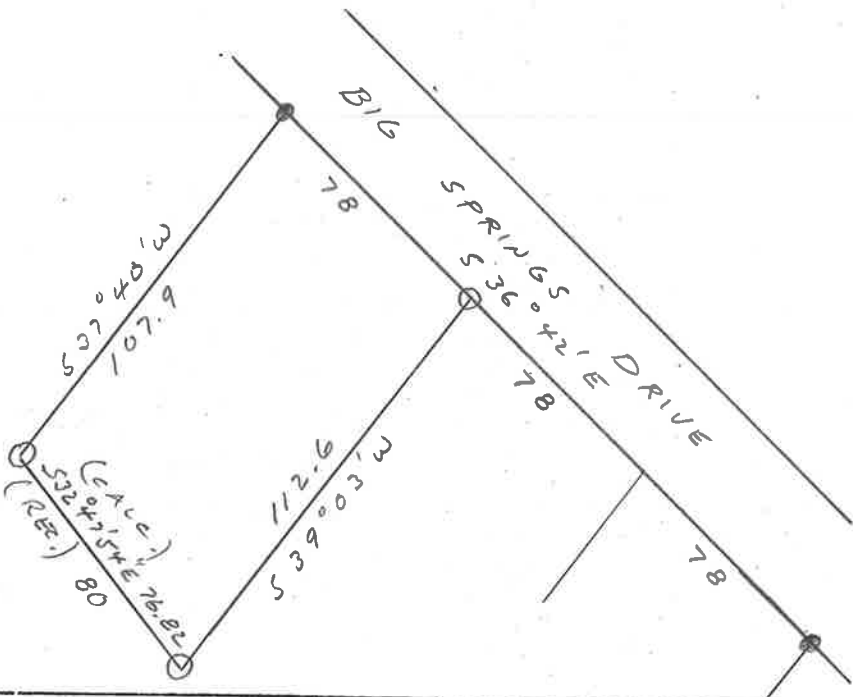
CALIFORNIA COORDINATE SYSTEM ORDER: FIRST  SECOND  THIRD   
 STATIONS USED: NGS (USC & GS)  STATE  COUNTY  OTHER  STATION \_\_\_\_\_ STATION \_\_\_\_\_  
 ZONE \_\_\_\_\_ ELEVATION \_\_\_\_\_ NORTHINGS (Y) \_\_\_\_\_ EASTINGS (X) \_\_\_\_\_

SKETCH: (Include reference tie or witness points, remarks and topo of area)



**LEGEND**

- Fd. ORIG. 1/2" I.P. CAPPED IT LS 4643
- ⊙ SET 1/2" REBAR CAPPED LS 4643



**SURVEYOR'S CERTIFICATE**

THIS CORNER RECORD WAS PREPARED BY ME OR UNDER MY DIRECTION IN CONFORMANCE WITH THE LAND SURVEYING ACT ON 3/21 1986

SIGNED: Stephen H. Schmidt  
 L.S. or R.C.E. No.: LS 4643



**COUNTY SURVEYOR'S CERTIFICATE**

THE CORNER RECORD WAS RECEIVED 3-26 1986 AND EXAMINED AND FILED 3-26- 1986

BY: Tom Schutte  
 TITLE: Assistant Engineer

DOCUMENT No. 54

STATEMENT ON BACK OF SHEET

YES  NO