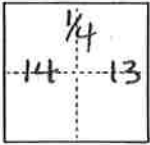


CORNER RECORD

COUNTY OF Plumas T. 23 N R. 7 E Mt. Diablo MERIDIAN CALIFORNIA

CORNER TYPE: GOV'T. CORNER MEANDER RANCHO CONTROL OTHER
 CORNER IDENTIFICATION — DATE OF VISIT OCTOBER 16 19 86



CORNER — LEFT AS FOUND FOUND AND TAGGED REESTABLISHED OBLITERATED CORNER REBUILT

PHYSICAL DESCRIPTION OF CORNER FOUND; EVIDENCE AND METHOD USED TO IDENTIFY OR REESTABLISH

FOUND 2" X 30" ALUM. MONUMENT WITH 3/4" AL. CAP STAMPED LYING ON TOP OF THE GROUND NEAR SW BT. PULLED DISTANCES FROM BT'S AND FOUND BREAK OFF BASE OF MONUMENT BURIED ± 20" DEEP. (CORNER DISTURBED BY LOGGING ACTIVITY)

T23N R7E
1/4
S14/S13
LS5090
1983

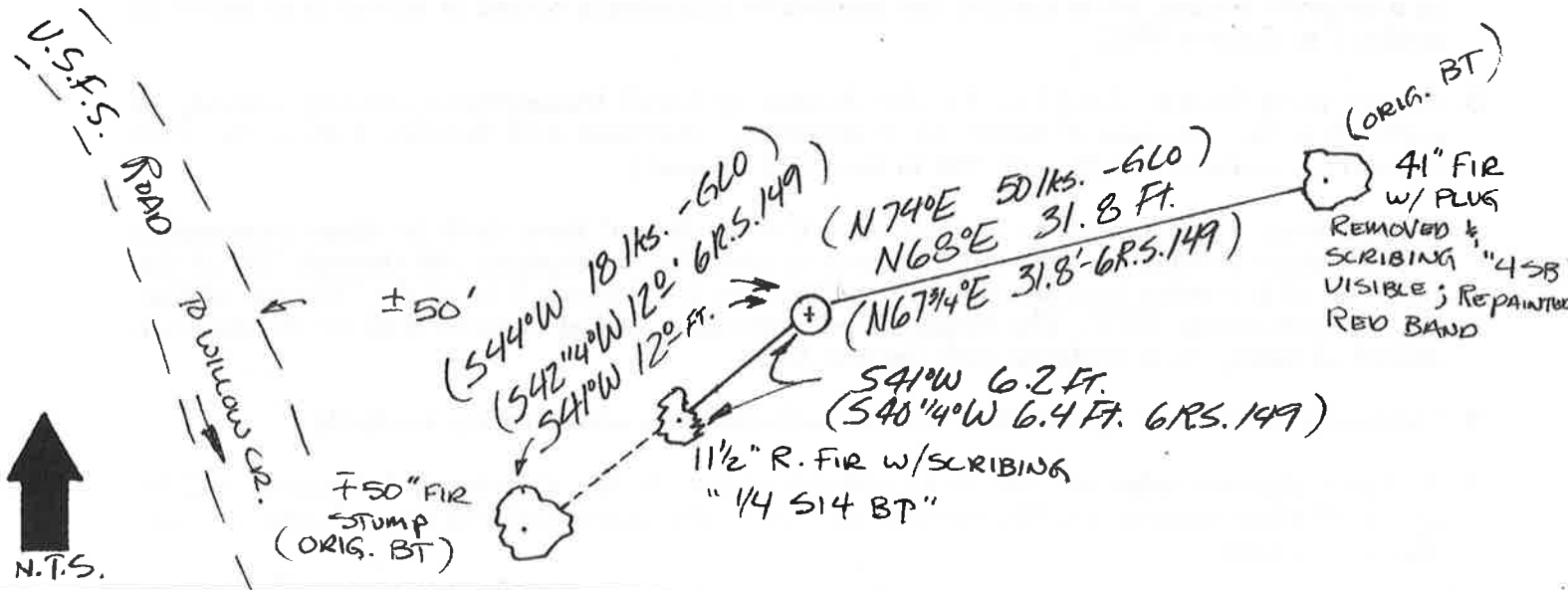
PHYSICAL DESCRIPTION OF MONUMENTS REBUILT OR PERPETUATED

SET 2" X 30" ALUM. MONUMENT WITH 3/4" ALUM. CAP STAMPED ON TOP OF FOUND BREAK-OFF BASE. BUILT MOUND OF STONE AND SET GALVANIZED 6' FENCEPOST WITH LAND SURVEY MONUMENT SIGN.

T23N R7E
1/4
S14/S13
LS4976
1986

CALIFORNIA COORDINATE SYSTEM ORDER: FIRST SECOND THIRD
 STATIONS USED: NGS (USC & GS) STATE COUNTY OTHER STATION _____ STATION _____
 ZONE _____ ELEVATION _____ NORTHINGS (Y) _____ EASTINGS (X) _____

SKETCH: (Include reference tie or witness points, remarks and topo of area)

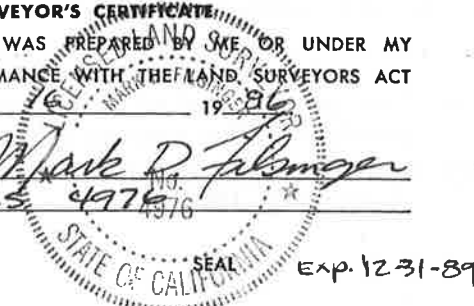


SURVEYOR'S CERTIFICATE

THIS CORNER RECORD WAS PREPARED BY ME OR UNDER MY DIRECTION IN CONFORMANCE WITH THE LAND SURVEYORS ACT ON OCTOBER 16 19 86

SIGNED: Mark D. Felsinger

L.S. or R.C.E. No.: LS 4976



COUNTY SURVEYOR'S CERTIFICATE

THE CORNER RECORD WAS RECEIVED _____ 19 _____ AND EXAMINED AND FILED Oct 17 19 88

BY: Tom Smith

TITLE: Asst Co Engr

DOCUMENT No. 56

STATEMENT ON BACK OF SHEET

YES NO