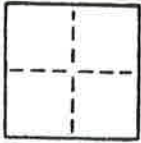


# CORNER RECORD

COUNTY OF PLUMAS T. 27N R. 7E MOUNT Diablo MERIDIAN CALIFORNIA  
 CORNER TYPE: GOVT. CORNER  MEANDER  RANCHO  CONTROL  OTHER  LOT  
 CORNER IDENTIFICATION — DATE OF VISIT OCTOBER 14 1985



LOT 107, BLOCK ONE  
LAKE ALMADOR COUNTRY CLUB S.D. IT. 4  
(PLUMAS COUNTY MAPS BK 2 AT PG 6)

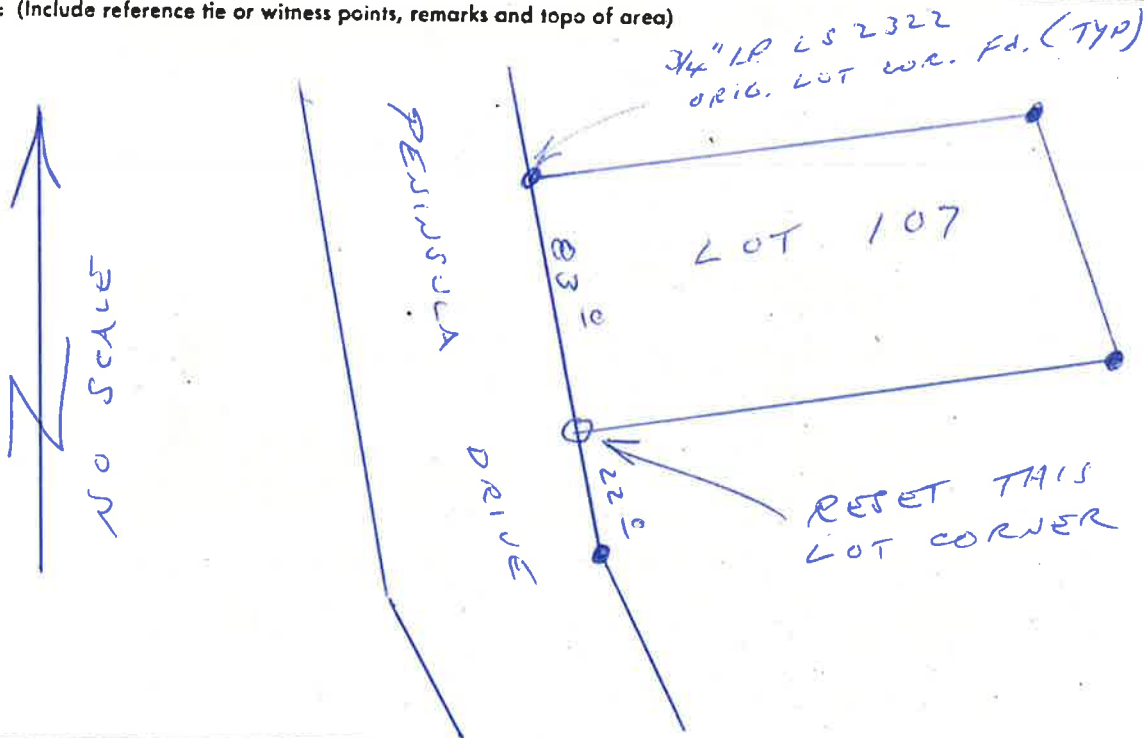
CORNER — LEFT AS FOUND  FOUND AND TAGGED  REESTABLISHED OBLITERATED CORNER  REBUILT  (RESET)

PHYSICAL DESCRIPTION OF CORNER FOUND; EVIDENCE AND METHOD USED TO IDENTIFY OR REESTABLISH  
CORNER WAS LOST, RESET WITH TRANSIT AND CHAIN (SEE SKETCH)

PHYSICAL DESCRIPTION OF MONUMENTS REBUILT OR PERPETUATED  
3/4" x 24" IRON PIPE CAPPED LS 4643

CALIFORNIA COORDINATE SYSTEM ORDER: FIRST  SECOND  THIRD   
 STATIONS USED: NGS (USC & GS)  STATE  COUNTY  OTHER  STATION \_\_\_\_\_ STATION \_\_\_\_\_  
 ZONE \_\_\_\_\_ ELEVATION \_\_\_\_\_ NORTHINGS (Y) \_\_\_\_\_ EASTINGS (X) \_\_\_\_\_

SKETCH: (Include reference tie or witness points, remarks and topo of area)



**SURVEYOR'S CERTIFICATE**  
 THIS CORNER RECORD WAS PREPARED BY ME OR UNDER MY DIRECTION IN CONFORMANCE WITH THE LAND SURVEYORS ACT ON OCTOBER 14  
 SIGNED: Stephen H. Schmidt  
 L.S. or R.C.E. No.: LS 4643



**COUNTY SURVEYOR'S CERTIFICATE**  
 THE CORNER RECORD WAS RECEIVED \_\_\_\_\_ 19\_\_\_\_  
 AND EXAMINED AND FILED 10-17 19 85  
 BY: R. Tom Smith  
 TITLE: Assess Co Engr  
 DOCUMENT No. 57

STATEMENT ON BACK OF SHEET YES  NO