

# CORNER RECORD

COUNTY OF Plumas Sec 7 T. <sup>24</sup>23 North R. 10 East Mount Diablo MERIDIAN CALIFORNIA

CORNER TYPE: GOV'T. CORNER  MEANDER  RANCHO  CONTROL  OTHER

CORNER IDENTIFICATION — DATE OF VISIT July 22 19 90



CORNER — LEFT AS FOUND  FOUND AND TAGGED  REESTABLISHED OBLITERATED CORNER  REBUILT

PHYSICAL DESCRIPTION OF CORNER FOUND; EVIDENCE AND METHOD USED TO IDENTIFY OR REESTABLISH

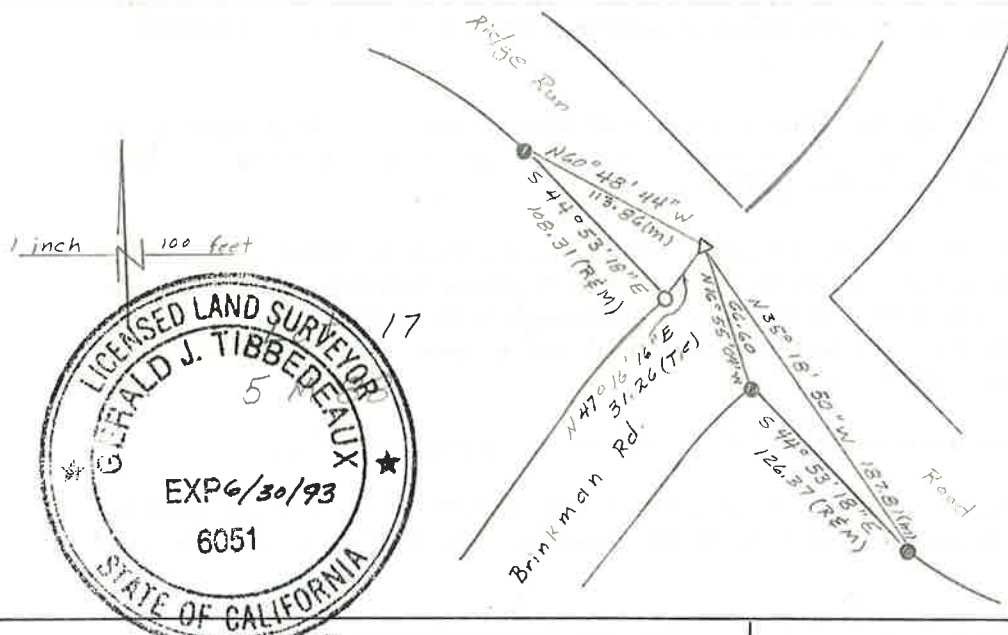
See Sketch

PHYSICAL DESCRIPTION OF MONUMENTS REBUILT OR PERPETUATED

See Sketch

CALIFORNIA COORDINATE SYSTEM ORDER: FIRST  SECOND  THIRD   
 STATIONS USED: NGS (USC & GS)  STATE  COUNTY  OTHER  STATION \_\_\_\_\_  
 ZONE \_\_\_\_\_ ELEVATION \_\_\_\_\_ NORTHINGS (Y) \_\_\_\_\_ EASTINGS (X) \_\_\_\_\_

SKETCH: (Include reference tie or witness points, remarks and topo of area)



- Legend
- Fd 1/2" Rebar & Aluminum Cap R.C.E. 26870
  - Set 3/4" I.P. & tag LS 6051
  - △ Set Nail
  - (R) Record Per 5M88
  - (M) Measure



**SURVEYOR'S CERTIFICATE**  
 THIS CORNER RECORD WAS PREPARED BY ME OR UNDER MY DIRECTION IN CONFORMANCE WITH THE LAND SURVEYORS ACT ON July 29 19 90.

SIGNED: Gerald Joseph Tibbadeaux  
 L.S. or R.C.E. No.: 6051

**COUNTY SURVEYOR'S CERTIFICATE**  
 THE CORNER RECORD WAS RECEIVED July 22 AND EXAMINED AND FILED Oct 2 19 92.  
 BY: Tom Hunter  
 TITLE: County Engineer

DOCUMENT No. 60  
 STATEMENT ON BACK OF SHEET YES  NO