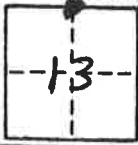


# CORNER RECORD

COUNTY OF PLUMAS T. 28 N R. 7 E MD MERIDIAN CALIFORNIA  
 CORNER TYPE: GOVT. CORNER  MEANDER  RANCHO  CONTROL  OTHER   
 CORNER IDENTIFICATION - DATE OF VISIT October 16, 1991



N 1/4 Corner Section 13

CORNER - LEFT AS FOUND  FOUND AND TAGGED  REESTABLISHED OBLITERATED CORNER  RESULT

PHYSICAL DESCRIPTION OF CORNER FOUND; EVIDENCE AND METHOD USED TO IDENTIFY OR REESTABLISH

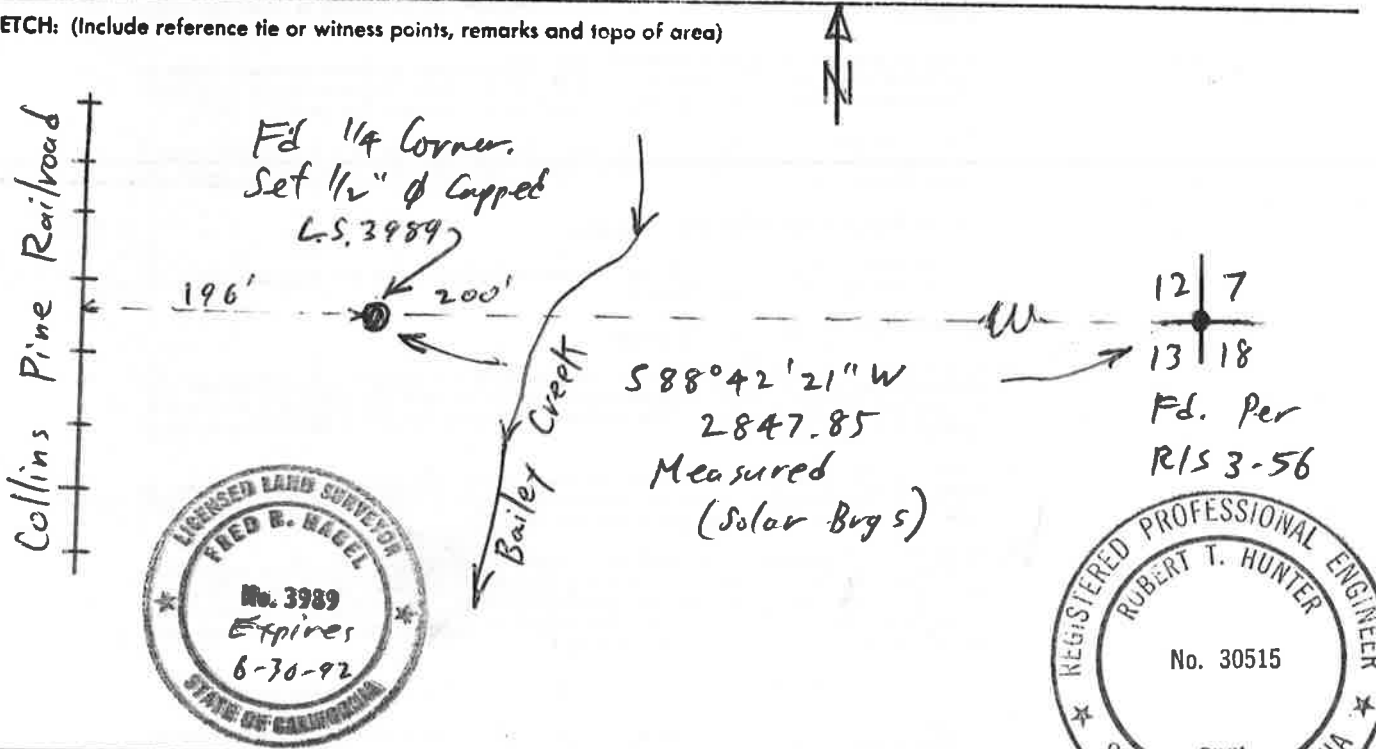
Found Stone md. in old burn area underneath Manzanita bush. Matches GLO call to Bailey Creek 3 chains east. Fd old Fir stump hole S43 1/2° W 27.7'

PHYSICAL DESCRIPTION OF MONUMENTS REBUILT OR PERPETUATED

Rebuilt stone mound; tied to section corner 1/2 mile east; set 1/2" iron rod capped "L.S. 3989"

CALIFORNIA COORDINATE SYSTEM ORDER: FIRST  SECOND  THIRD   
 STATIONS USED: NGS (USC & GS)  STATE  COUNTY  OTHER  STATION \_\_\_\_\_ STATION \_\_\_\_\_  
 ZONE \_\_\_\_\_ ELEVATION \_\_\_\_\_ NORTHINGS (Y) \_\_\_\_\_ EASTINGS (X) \_\_\_\_\_

SKETCH: (Include reference tie or witness points, remarks and topo of area)



**SURVEYOR'S CERTIFICATE**  
 THIS CORNER RECORD WAS PREPARED BY ME OR UNDER MY DIRECTION IN CONFORMANCE WITH THE LAND SURVEYORS ACT ON October 16 1991  
 SIGNED: Fred R. Hage  
 L.S. or R.C.E. No.: LS 3989

**COUNTY SURVEYOR'S CERTIFICATE**  
 THE CORNER RECORD WAS RECEIVED 12/18 AND EXAMINED AND FILED 12/27 1991  
 BY: R Tom Hunter  
 TITLE: Asst. Co. Engineer  
 DOCUMENT No. 62

SEAL

STATEMENT ON BACK OF SHEET

YES  NO