

CORNER RECORD

COUNTY OF PLUMAS T. 28 N R. 7 E MD MERIDIAN CALIFORNIA
 CORNER TYPE: GOVT. CORNER MEANDER RANCHO CONTROL OTHER
 CORNER IDENTIFICATION - DATE OF VISIT October 16, 1991



S 1/4 Corner Section 13

CORNER - LEFT AS FOUND FOUND AND TAGGED REESTABLISHED OBLITERATED CORNER REBUILT

PHYSICAL DESCRIPTION OF CORNER FOUND; EVIDENCE AND METHOD USED TO IDENTIFY OR REESTABLISH

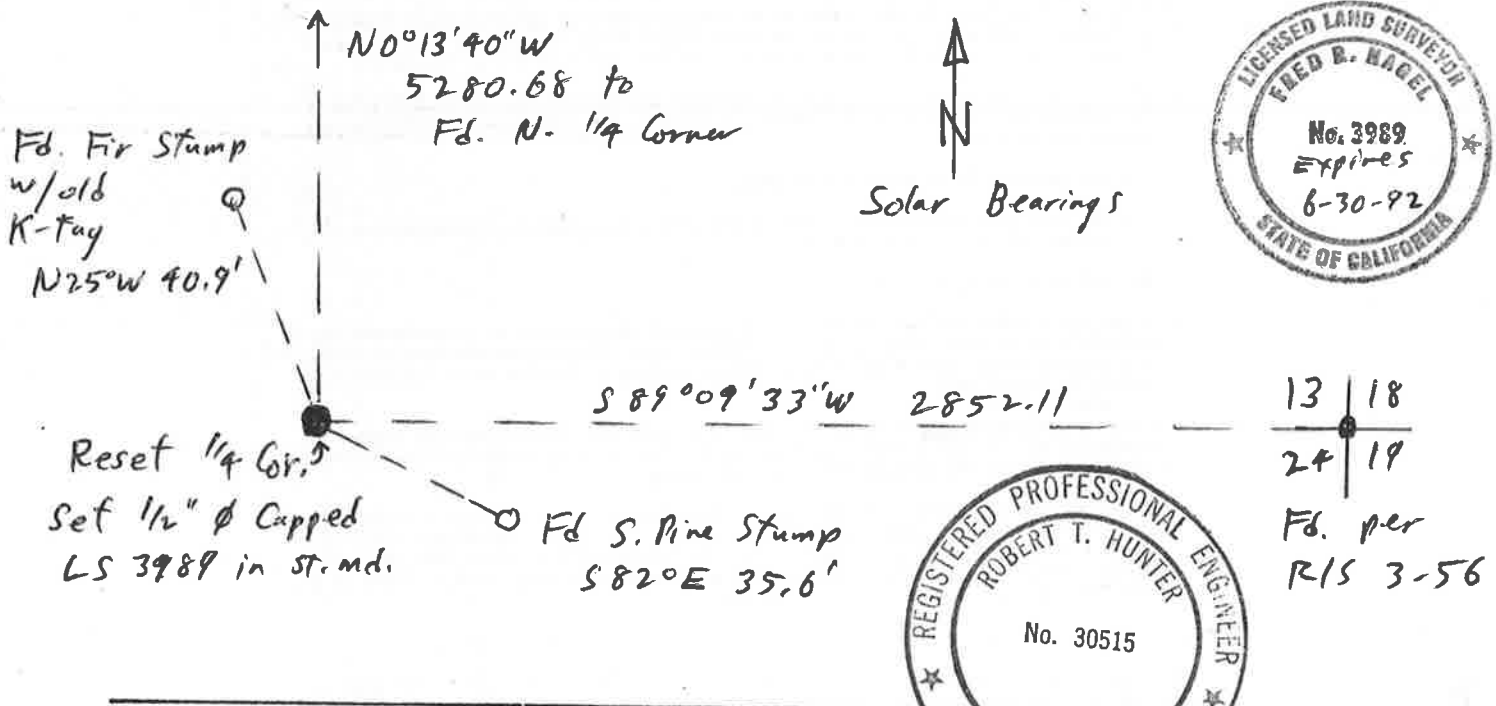
Fd. Fir B.T. Stamp w/ old K-tag
 Fd. S. Pine Stamp - Correlates with Fir Stamp
 All in area of old burn.
 Matches terrain & line tree calls to west

PHYSICAL DESCRIPTION OF MONUMENTS REBUILT OR PERPETUATED

Rebuilt stone mound at intersections of GLO B.T. dimensions. Set 1/2" iron rod capped "L.S. 3989" tied to Section Corner 1/2 Mile East, and 1/4 Corner 1 mile North

CALIFORNIA COORDINATE SYSTEM ORDER: FIRST SECOND THIRD
 STATIONS USED: NGS (USC & GS) STATE COUNTY OTHER STATION _____ STATION _____
 ZONE _____ ELEVATION _____ NORTHINGS (Y) _____ EASTINGS (X) _____

SKETCH: (Include reference tie or witness points, remarks and topo of area)



SURVEYOR'S CERTIFICATE
 THIS CORNER RECORD WAS PREPARED BY ME OR UNDER MY DIRECTION IN CONFORMANCE WITH THE LAND SURVEYORS ACT ON October 16, 1991
 SIGNED: Fred R Nagel
 L.S. or R.C.E. No.: LS 3989

COUNTY SURVEYOR'S CERTIFICATE
 THE CORNER RECORD WAS RECEIVED 12/18, 1991 AND EXAMINED AND FILED 12/27, 1991
 BY: R. Tom Hunter
 TITLE: Asst. Co. Engineer
 DOCUMENT No. 63
 STATEMENT ON BACK OF SHEET YES NO