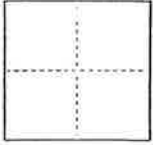


CORNER RECORD

COUNTY OF Plumas T. 24 N R. 9 E Mount Diablo MERIDIAN CALIFORNIA

CORNER TYPE: GOV'T. CORNER MEANDER RANCHO CONTROL OTHER

CORNER IDENTIFICATION — DATE OF VISIT June 1 19 92



CORNER — LEFT AS FOUND FOUND AND TAGGED REESTABLISHED OBLITERATED CORNER REBUILT

PHYSICAL DESCRIPTION OF CORNER FOUND; EVIDENCE AND METHOD USED TO IDENTIFY OR REESTABLISH

See Attached sketch

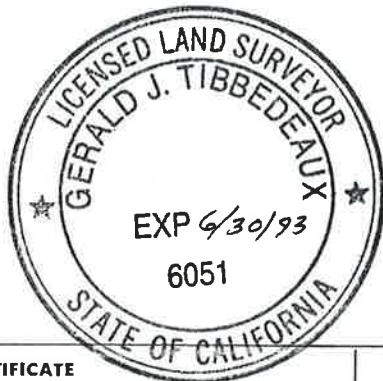
PHYSICAL DESCRIPTION OF MONUMENTS REBUILT OR PERPETUATED

See Attached sketch

CALIFORNIA COORDINATE SYSTEM ORDER: FIRST SECOND THIRD
STATIONS USED: NGS (USC & GS) STATE COUNTY OTHER STATION _____ STATION _____
ZONE _____ ELEVATION _____ NORTHINGS (Y) _____ EASTINGS (X) _____

SKETCH: (Include reference tie or witness points, remarks and topo of area)

see Attached sketch



SURVEYOR'S CERTIFICATE

THIS CORNER RECORD WAS PREPARED BY ME OR UNDER MY DIRECTION IN CONFORMANCE WITH THE LAND SURVEYORS ACT ON June 1 19 92

SIGNED: Gerald Tibbadeaux

L.S. or R.C.E. No.: LS 6051

SEAL

COUNTY SURVEYOR'S CERTIFICATE

THE CORNER RECORD WAS RECEIVED _____ 19 _____ AND EXAMINED AND FILED July 6 19 92

BY: Tom Hunter

TITLE: Co. Engineer

DOCUMENT No. 64

STATEMENT ON BACK OF SHEET

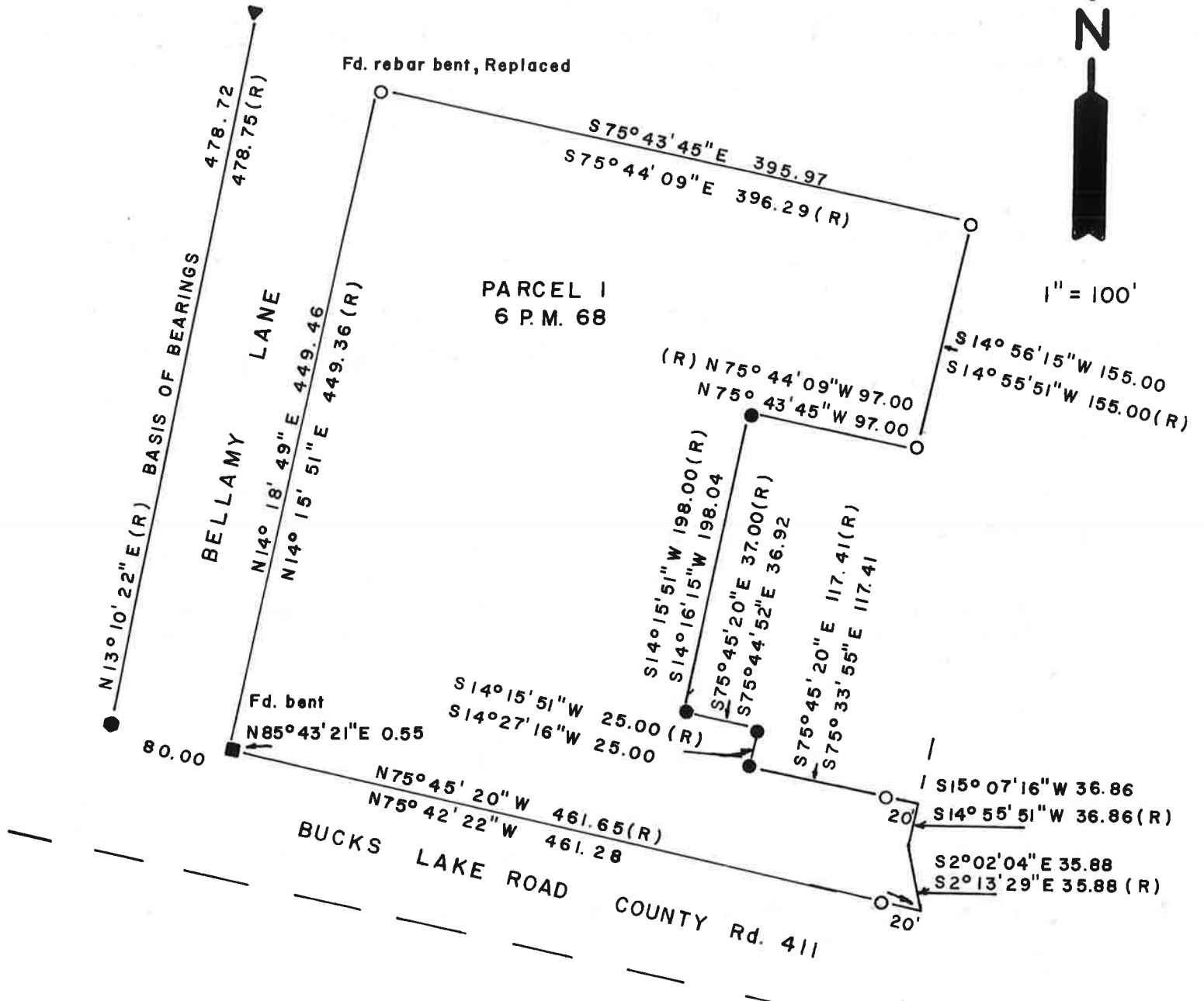
YES NO

LEGEND

- SET 3/4" IRON PIPE TAG L.S. 6051
- FOUND 5/8" REBAR & TAG R.E 13528
- ▲ FOUND 1/2" IRON PIPE & TAG RE 11173
- FOUND 1/2" IRON PIPE OPEN
- FOUND 3/4" IRON PIPE OPEN
- (R) RECORD PER 6 P.M. 68



1" = 100'



SKETCH OF MONUMENTATION
PARCEL I, 6 P.M. 68