

# CORNER RECORD

COUNTY OF PLUMAS T. 26N R. 9E M.D. \_\_\_\_\_ MERIDIAN \_\_\_\_\_ CALIFORNIA  
 CORNER TYPE: GOVT. CORNER  MEANDER  RANCHO  CONTROL  OTHER   
 CORNER IDENTIFICATION — DATE OF VISIT JULY 19 88



SECTION 23  
 SW CORNER RUBY M.S. # 1221

CORNER — LEFT AS FOUND  FOUND AND TAGGED  REESTABLISHED OBLITERATED CORNER  REBUILT

PHYSICAL DESCRIPTION OF CORNER FOUND; EVIDENCE AND METHOD USED TO IDENTIFY OR REESTABLISH

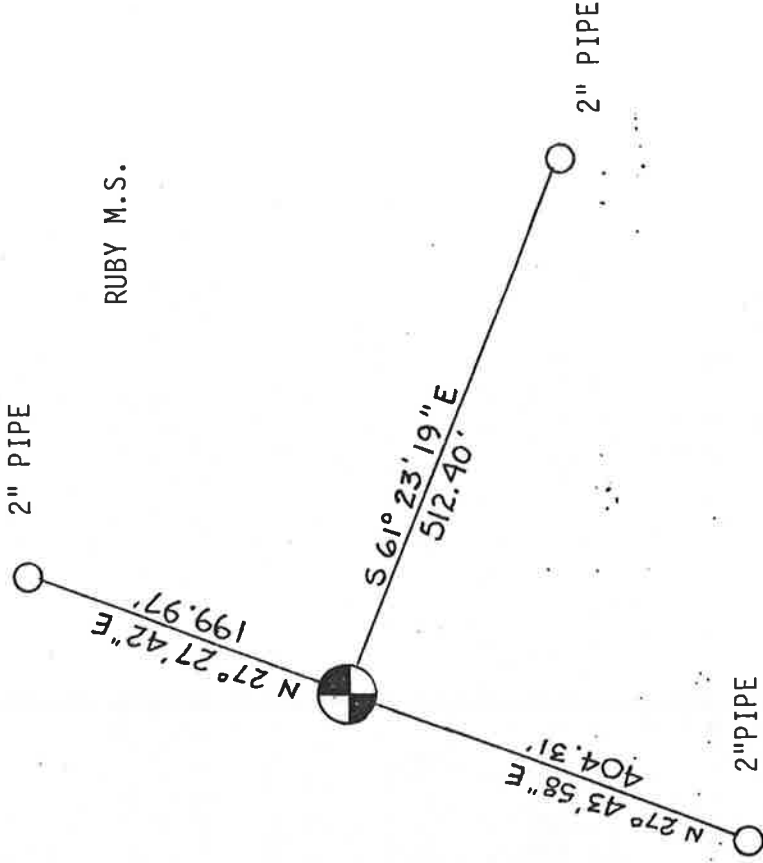
FOUND 2" PIPE

PHYSICAL DESCRIPTION OF MONUMENTS REBUILT OR PERPETUATED

CALIFORNIA COORDINATE SYSTEM ORDER: FIRST  SECOND  THIRD  STATION \_\_\_\_\_  
 STATIONS USED: NGS (USC & GS)  COUNTY  OTHER  EASTINGS (X) \_\_\_\_\_  
 ZONE \_\_\_\_\_ ELEVATION \_\_\_\_\_ NORTHINGS (Y) \_\_\_\_\_

(Fold)

SKETCH: (Include reference tie or witness points, remarks and topo of area)



**SURVEYOR'S CERTIFICATE**

THIS CORNER RECORD WAS PREPARED BY ME OR UNDER MY DIRECTION IN CONFORMANCE WITH THE LAND SURVEYORS ACT ON JULY 20 88



SIGNED: Michael P. Lejeune  
 L.S. OF R.G.E. No. LS 5067

**COUNTY SURVEYOR'S CERTIFICATE**

THE CORNER RECORD WAS RECEIVED 15 1993  
 AND EXAMINED AND FILED 15 1993

BY: R. Tom Schuster  
 TITLE: Co. Surveyor

DOCUMENT No: 82

STATEMENT ON BACK OF SHEET

YES  NO