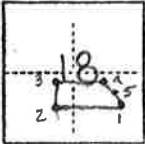


CORNER RECORD

COUNTY OF Plumas T. 25 N R. 8 E SEC. 18 M.D. Meridian CALIFORNIA

CORNER TYPE: GOV'T. CORNER MEANDER RANCHO CONTROL OTHER MINERAL SURVEY #5896
 CORNER IDENTIFICATION - DATE OF VISIT NOV. 6 1989

12 MILE BAR PLACER
COR. NO. 2

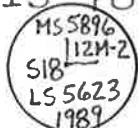


LOCATION OF MS 5896, COR NO 2,
WITHIN SEC. 18

CORNER — LEFT AS FOUND FOUND AND TAGGED REESTABLISHED OBLITERATED CORNER REBUILT

PHYSICAL DESCRIPTION OF CORNER FOUND; EVIDENCE AND METHOD USED TO IDENTIFY OR REESTABLISH

REESTABLISHED COR. NO. 2 BY DISTANCE/DISTANCE INTERSECTION FROM ORIGINAL BEARING TREES. THIS POSITION ALSO FIT ROAD CALL 15 FT. TO NORTH.

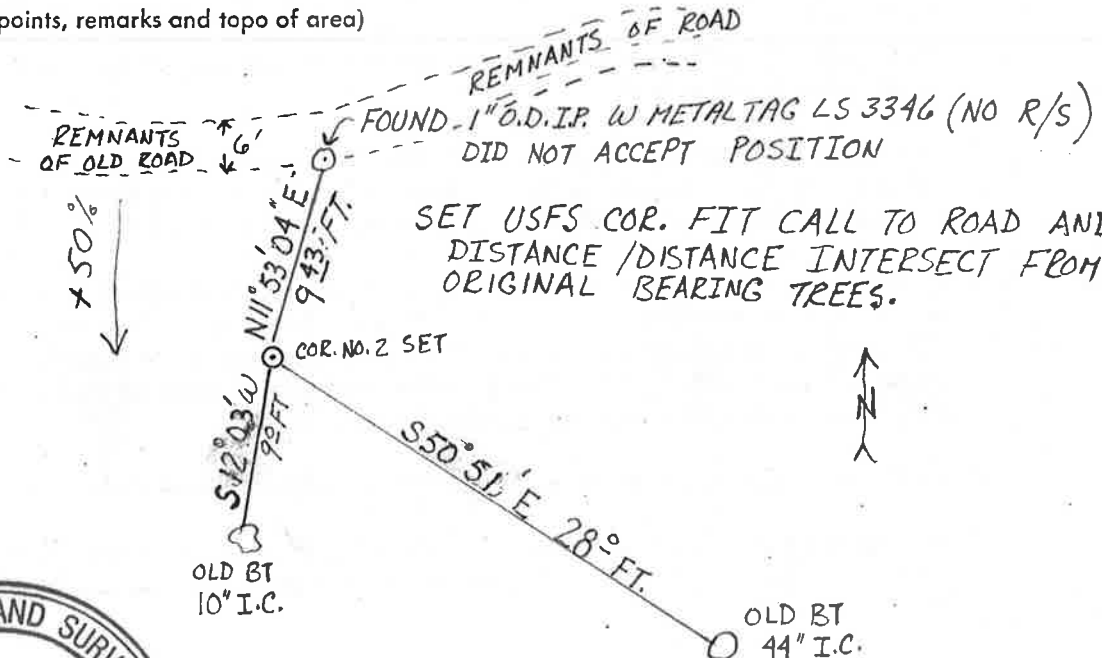


PHYSICAL DESCRIPTION OF MONUMENTS REBUILT OR PERPETUATED

SET (1) 24"x1/2" ALUMINUM ROD 6" ABOVE GROUND WITH A 3/4" ALUMINUM CAP STAMPED WITH USFS LOGO. 30"x24"x7" MOUND OF STONE.

CALIFORNIA COORDINATE SYSTEM ORDER: FIRST SECOND THIRD
 STATIONS USED: NGS (USC & GS) STATE COUNTY OTHER STATION _____ STATION _____
 ZONE _____ ELEVATION _____ NORTHINGS (Y) _____ EASTINGS (X) _____

SKETCH: (Include reference tie or witness points, remarks and topo of area)



SURVEYOR'S CERTIFICATE

THIS CORNER RECORD WAS PREPARED BY WILLIAM GLENN SNOW OR UNDER HIS DIRECTION IN CONFORMANCE WITH THE SURVEYORS ACT ON 11/22/89

SIGNED: William Glenn Snow Exp. 12/31/90

L.S. or R.C.E. No.: 5623



COUNTY SURVEYOR'S CERTIFICATE

THE CORNER RECORD WAS RECEIVED 1/5 1993 AND EXAMINED AND FILED 1/5 1993

BY: R. Tom Switzer

TITLE: Co. Surveyor

DOCUMENT No. 83

STATEMENT ON BACK OF SHEET

002-040-

YES NO

138