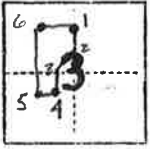


CORNER RECORD

SEC. 3

COUNTY OF Plumas T. 24N P. R9E MD MERIDIAN CALIFORNIA

CORNER TYPE: GOV'T. CORNER [] MEANDER [] RANCHO [] CONTROL [] OTHER [x] MINERAL SURVEY # 4540
CORNER IDENTIFICATION - DATE OF VISIT NOV. 13 19 89 SPHINX PLACER COR # 4



LOCATION OF COR NO. 4 MS 4540 IN SECTION 3

CORNER - LEFT AS FOUND [] FOUND AND TAGGED [] REESTABLISHED OBLITERATED CORNER [] REBUILT []

PHYSICAL DESCRIPTION OF CORNER FOUND; EVIDENCE AND METHOD USED TO IDENTIFY OR REESTABLISH

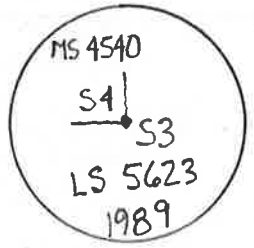
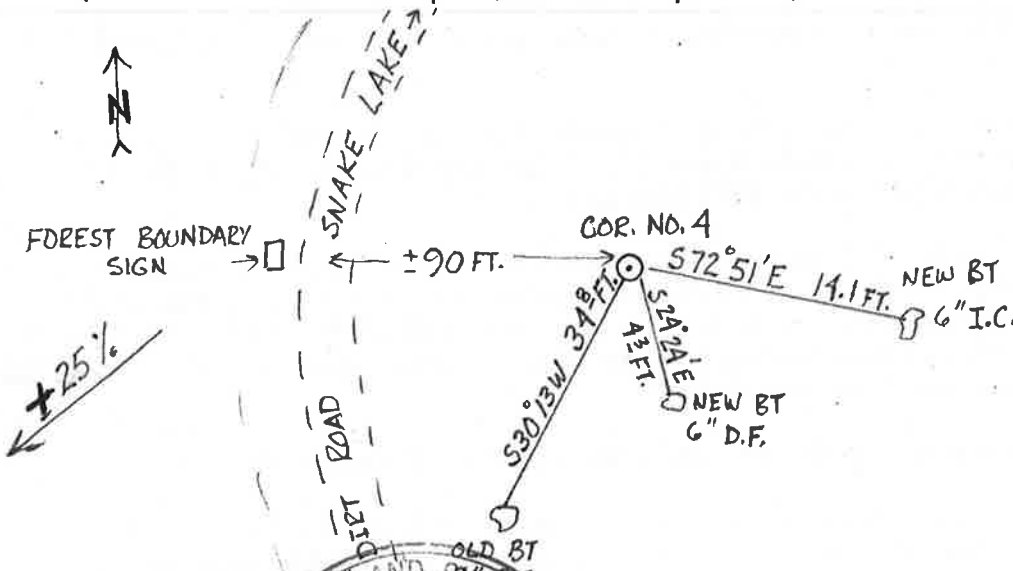
FOUND 48"x48"x6" MOUND OF STONE FROM WHICH BEARS THE ORIGINAL BEARING TREE S30°13'W 34⁸ FT. [CUT INTO 9" OAK FOUND UNREADABLE] RECORD (S30°15'W 34¹ FT.)
[SCRIBING, RING COUNT ± 80 YEARS TO SCRIBING]

PHYSICAL DESCRIPTION OF MONUMENTS REBUILT OR PERPETUATED

SET A STANDARD USFS MONUMENT: 1'12" LENGTH OF 1/2" O.D. ALUMINUM ROD, AND 1 LENGTH OF 24" ALUMINUM ROD WITH AN ALUMINUM CAP MARKED AS SHOWN BELOW 36"x36"x8" MOUND OF STONE AROUND MONUMENT

CALIFORNIA COORDINATE SYSTEM ORDER: FIRST [] SECOND [] THIRD []
STATIONS USED: NGS (USC & GS) [] STATE [] COUNTY [] OTHER [] STATION _____ STATION _____
ZONE _____ ELEVATION _____ NORTHINGS (Y) _____ EASTINGS (X) _____

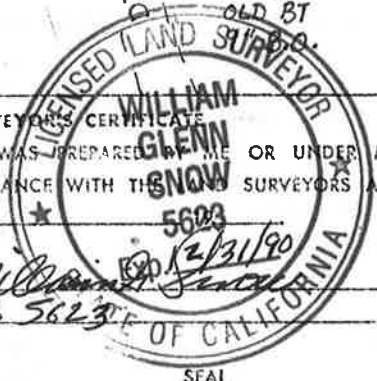
SKETCH: (Include reference tie or witness points, remarks and topo of area)



SURVEYOR'S CERTIFICATE
THIS CORNER RECORD WAS PREPARED BY ME OR UNDER MY DIRECTION IN CONFORMANCE WITH THE SURVEYORS ACT ON 11/22/89

SIGNED: [Signature]

L.S. or R.C.E. No.: LS 5623



COUNTY SURVEYOR'S CERTIFICATE

THE CORNER RECORD WAS RECEIVED 1/5 1993 AND EXAMINED AND FILED 1/5 1993 BY: [Signature]

TITLE: Co. Surveyor

DOCUMENT No. 85

STATEMENT ON BACK OF SHEET

YES [] NO [] ✓ J.P.