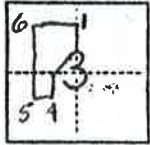


CORNER RECORD

COUNTY OF Plumas T. 24N R. 9E SEC. 3 MD MERIDIAN CALIFORNIA

CORNER TYPE: GOV'T. CORNER  MEANDER  RANCHO  CONTROL  OTHER

CORNER IDENTIFICATION - DATE OF VISIT DEC. 14 1989



CORNER NO. 6 OF MS 4540 SPHINX PLACER CLAIM

CORNER - LEFT AS FOUND  FOUND AND TAGGED  REESTABLISHED OBLITERATED CORNER  REBUILT

PHYSICAL DESCRIPTION OF CORNER FOUND; EVIDENCE AND METHOD USED TO IDENTIFY OR REESTABLISH

FOUND 4"x4" POST WITH "TB NO 11" SCRIBED ON ONE SIDE IN A 18"x18" x 6" MOUND OF STONE

ORIGINAL BT NOT FOUND

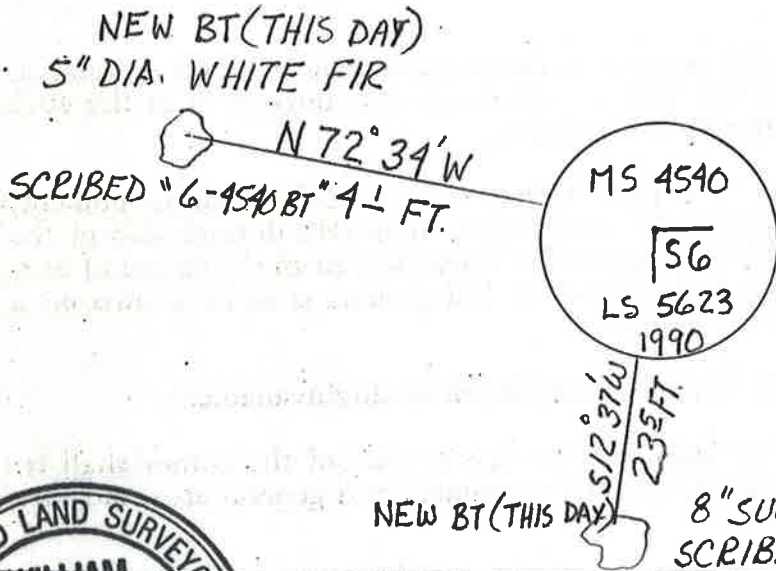
ACCEPTED FOUND MONUMENT AS BEST AVAILABLE EVIDENCE

PHYSICAL DESCRIPTION OF MONUMENTS REBUILT OR PERPETUATED

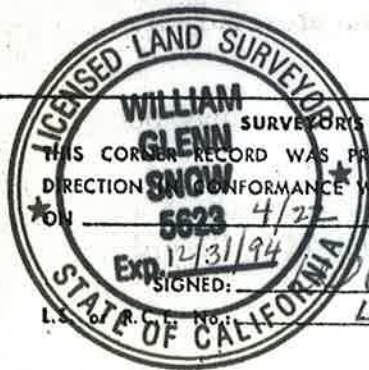
SET A 5/8" ALUMINUM ROD (24" LENGTH + 12" LENGTH) 8" ABOVE GROUND WITH A 3 1/2" DIAMETER ALUMINUM CAP (STANDARD USFS LOGO) IN A 24"x24"x4" MOUND OF STONE

CALIFORNIA COORDINATE SYSTEM ORDER: FIRST  SECOND  THIRD   
STATIONS USED: NGS (USC & GS)  STATE  COUNTY  OTHER  STATION \_\_\_\_\_ STATION \_\_\_\_\_  
ZONE \_\_\_\_\_ ELEVATION \_\_\_\_\_ NORTHINGS (Y) \_\_\_\_\_ EASTINGS (X) \_\_\_\_\_

SKETCH: (Include reference tie or witness points, remarks and topo of area)



NO SCALE



SURVEYOR'S CERTIFICATE  
THIS CORNER RECORD WAS PREPARED BY ME OR UNDER MY DIRECTION IN CONFORMANCE WITH THE LAND SURVEYORS ACT  
ON 4/27 1991  
SIGNED: William G. Snow  
LS 5623

COUNTY SURVEYOR'S CERTIFICATE  
THE CORNER RECORD WAS RECEIVED 1/5/93 1993  
AND EXAMINED AND FILED 1/5 1993  
BY: R. Tom [Signature]  
TITLE: Co. Surveyor  
DOCUMENT No. 86

STATEMENT ON BACK OF SHEET YES  NO