

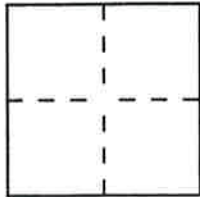
# CORNER RECORD

Document Number \_\_\_\_\_

SECTION 34, T. 23 N., R. 13 E., M.D.M

County of Plumas, California

Brief Legal Description LOT 19, DELLEKER SUBDIVISION UNIT No 2



### CORNER TYPE

Government Corner  Control   
 Meander  Property   
 Rancho  Other   
 Date of Survey AUGUST, 1992

### COORDINATES (Optional)

N. \_\_\_\_\_  
 E. \_\_\_\_\_  
 Zone \_\_\_\_\_ Datum \_\_\_\_\_  
 Elev. \_\_\_\_\_

Corner — Left as found  Found and tagged  Established  Reestablished  Rebuilt

Identification and type of corner found: Evidence used to identify or procedure used to establish or reestablish the corner:

FOUND 1/2" I.P.'s as shown on Page 2, in record positions from which I SET THE southwest corner of LOT 19

A description of the physical condition of the monument as found and as set or reset: southwest corner

OF LOT 19 WAS MISSING, SET 5/8" REBAR with PLASTIC CAP LS 2843

### SURVEYOR'S STATEMENT

This Corner Record was prepared by me or under my direction in conformance with the Land Surveyors' Act on Dec. 22 1992.

Signed John W Hamby L.S. or R.C.E. Number L.S. 2843



### COUNTY SURVEYOR'S STATEMENT

This Corner Record was received Dec 22 1992 and examined and filed Jan 20 1993.

Signed R Tom Spente Title Co. Engineer



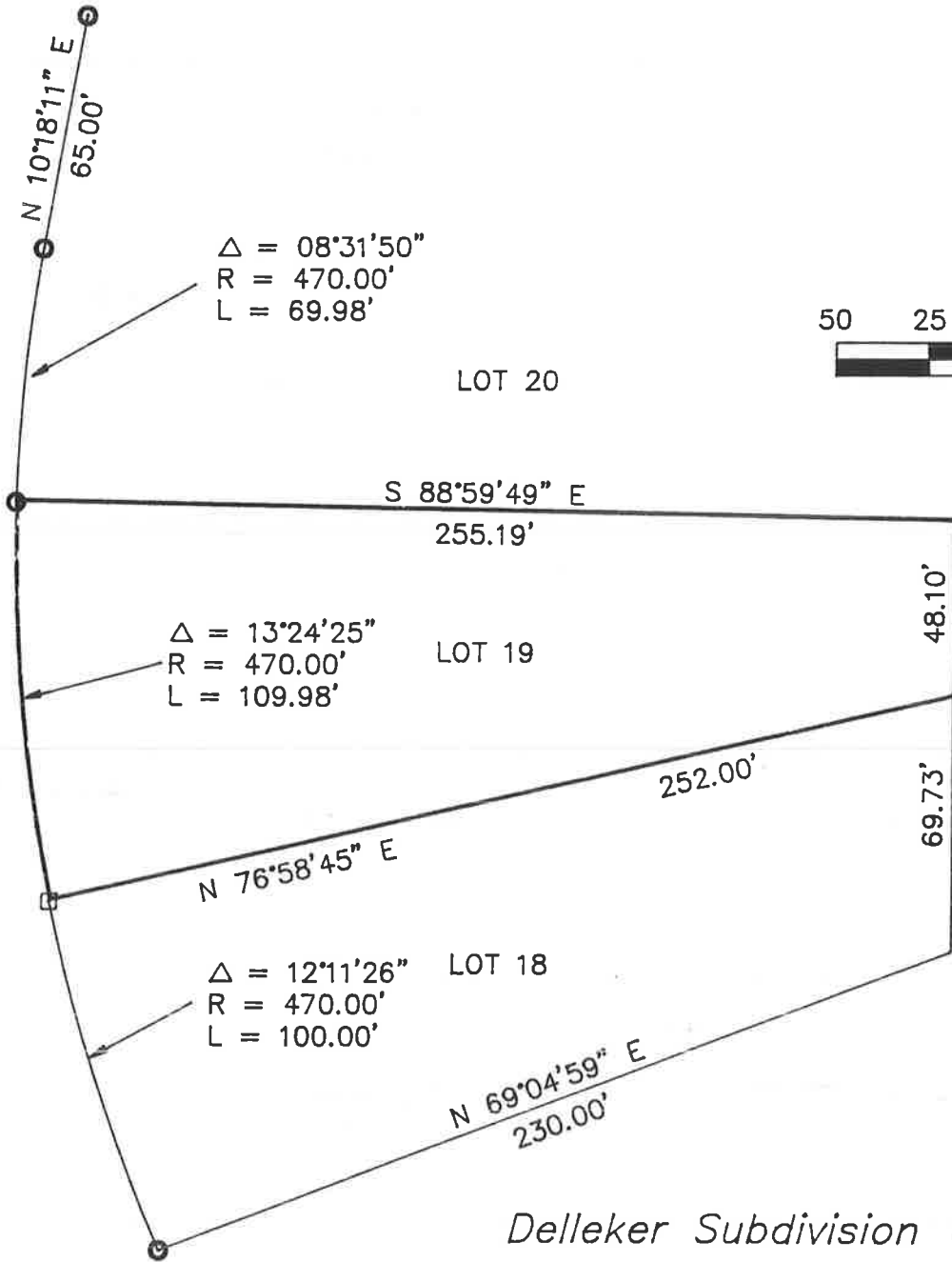
County Surveyor's Comment \_\_\_\_\_

# LEGEND

- Found 1/2" I.P. with Plastic Plug RCE 13219
- Set 5/8" Rebar with Plastic Cap LS 2843



1" = 50'



Delleker Subdivision Unit No. 2

Book 3 Maps Page 8