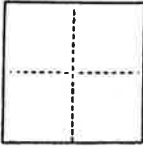


### CORNER RECORD

COUNTY OF PLUMAS T. 26 N R. 9 E MOUNT DIABLO MERIDIAN CALIFORNIA  
 CORNER TYPE: GOVT. CORNER  MEANDER  RANCHO  CONTROL  OTHER   
 CORNER IDENTIFICATION — DATE OF VISIT 6/8 1992



N.W. CORNER LOT 3 PER 5 M 81  
 WOLF CREEK MEADOWS  
 53 T26N R9E MDM

CORNER — LEFT AS FOUND  FOUND AND TAGGED  REESTABLISHED OBLITERATED CORNER  REBUILT

PHYSICAL DESCRIPTION OF CORNER FOUND; EVIDENCE AND METHOD USED TO IDENTIFY OR REESTABLISH

*FOUND UNTAGGED 1/2" x 18" I. ROD AT COMPUTED POSITION FROM SW CORNER OF LOT 3. TOP OF ROD WAS BENT - POSSIBLY RUN OVER BY LAWN MOWER.*

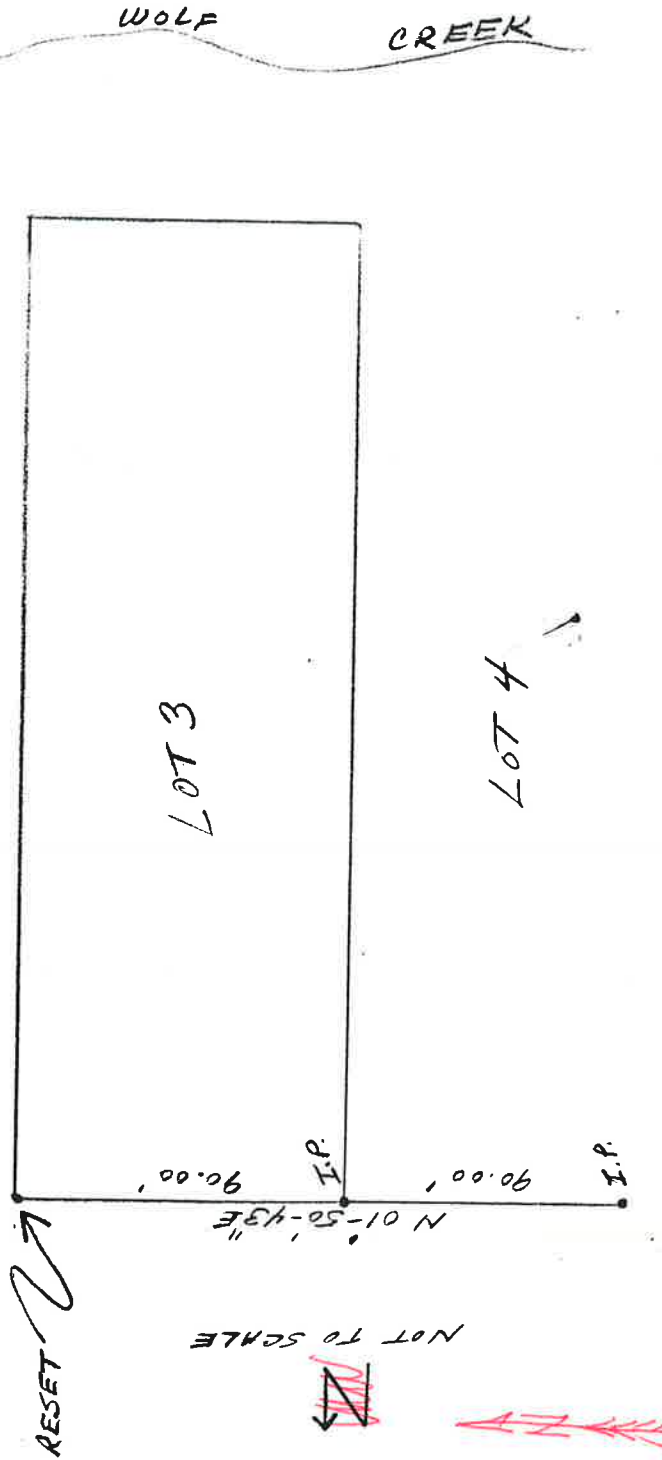
PHYSICAL DESCRIPTION OF MONUMENTS REBUILT OR PERPETUATED

*REPLACED WITH 5/8" x 24" IRON ROD WITH 2" CAP STAMPED L5 6569. BURIED TOP OF ROD 2" BELOW LAWN LEVEL. BURIED UNTAGGED I. ROD ALONG SIDE.*

CALIFORNIA COORDINATE SYSTEM ORDER: FIRST  SECOND  THIRD  STATION   
 STATIONS USED: NGS (USC & GS)  COUNTY  OTHER  STATION   
 ZONE \_\_\_\_\_ ELEVATION \_\_\_\_\_ NORTHINGS (M) \_\_\_\_\_ EASTINGS (X) \_\_\_\_\_

(Fold)

SKETCH: (Include reference tie or witness points, remarks and topo of area)



#### SURVEYOR'S CERTIFICATE

THIS CORNER RECORD WAS PREPARED BY ME OR UNDER MY DIRECTION IN CONFORMANCE WITH THE LAND SURVEYORS ACT ON \_\_\_\_\_ 19\_\_\_\_

SIGNED: John P. Schmidt  
 L.S. or R.C.E. No: L5 6569

#### COUNTY SURVEYOR'S CERTIFICATE

THE CORNER RECORD WAS RECEIVED 3/17 1993  
 AND EXAMINED AND FILED 3/24 1993

BY: R. Tom Shuck  
 TITLE: County Surveyor

DOCUMENT No. 90

STATEMENT ON BACK OF SHEET

SEAL

YES

NO

