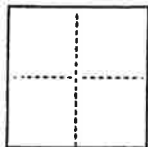


CORNER RECORD

COUNTY OF PLUMAS T. 26N R. 9E MOUNT DIABLO MERIDIAN CALIFORNIA
 CORNER TYPE: GOVT. CORNER MEANDER RANCHO CONTROL OTHER
 CORNER IDENTIFICATION - DATE OF VISIT 6/8 1992

NE CORNER LOT 3 PER 5 M 81
WOLF CREEK MEADOWS
S 3 T 26 N R 9 E M.D.M.

CORNER - LEFT AS FOUND FOUND AND TAGGED REESTABLISHED OBLITERATED CORNER REBUILT

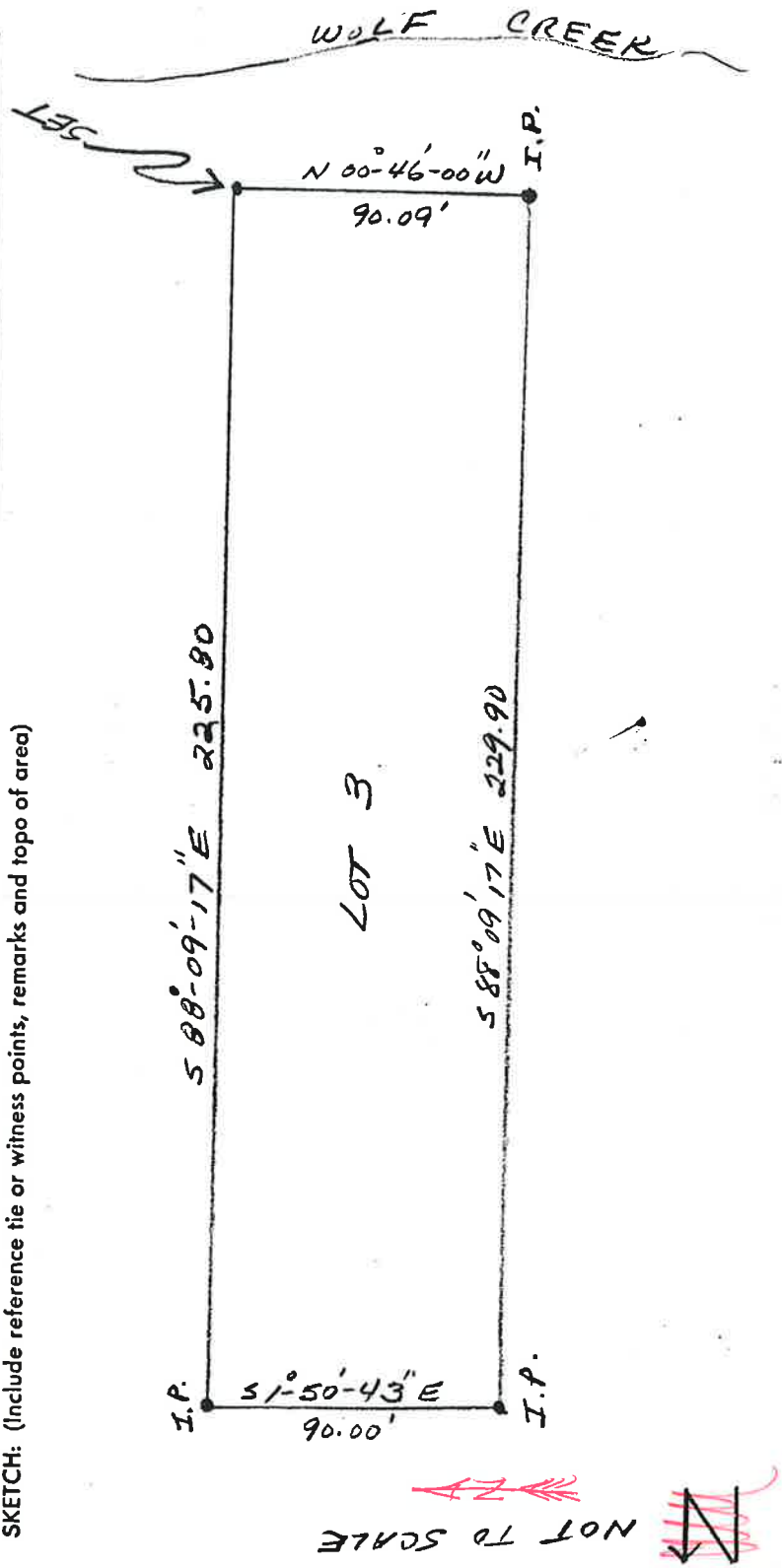
PHYSICAL DESCRIPTION OF CORNER FOUND; EVIDENCE AND METHOD USED TO IDENTIFY OR REESTABLISH:
CORNER SEARCHED FOR BUT NOT FOUND. REESTABLISHED
FROM RECORD (5 M 81) INTERSECTION OF NW COR. LOT 3
AND SE COR. LOT 3.

PHYSICAL DESCRIPTION OF MONUMENTS REBUILT OR PERPETUATED
SET 3/8" x 24" IRON ROD WITH 2" CAP STAMPED LS 6569
2" ABOVE GROUND LEVEL.

CALIFORNIA COORDINATE SYSTEM ORDER: FIRST SECOND THIRD
 STATIONS USED: NGS (USC & GS) COUNTY OTHER STATION _____ STATION _____
 ZONE _____ ELEVATION _____ NORTHINGS (Y) _____ EASTINGS (X) _____

(Fold)

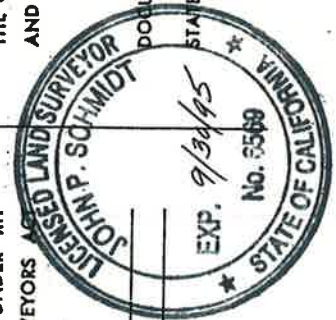
SKETCH: (Include reference tie or witness points, remarks and topo of area)



SURVEYOR'S CERTIFICATE

THIS CORNER RECORD WAS PREPARED BY ME OR UNDER MY DIRECTION IN CONFORMANCE WITH THE LAND SURVEYORS ACT ON 3/9 1993

SIGNED: John P. Schmidt
 L.S. or R.C.E. No. LS 6569



COUNTY SURVEYOR'S CERTIFICATE

THE CORNER RECORD WAS RECEIVED 3/17 1993
 AND EXAMINED AND FILED 3/24 1993
 BY: R. Tom Schuch
 TITLE: County Surveys

DOCUMENT No. 91

STATEMENT ON BACK OF SHEET

SEAL

YES NO