

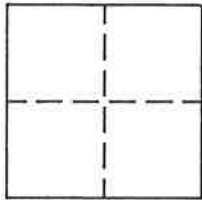
CORNER RECORD

Document Number _____

Near East City Limits of Portola _____

County of Plumas, California

Brief Legal Description Located in Section 30, T. 23 N., R. 14 E., M.D.M.



CORNER TYPE

Government Corner Control
 Meander Property
 Rancho Other
 Date of Survey MAY, 1994

COORDINATES (Optional)

N. _____
 E. _____
 Zone _____ Datum _____
 Elev. _____

Corner— Left as found Found and tagged Established Reestablished Rebuilt

Identification and type of corner found: Evidence used to identify or procedure used to establish or reestablish the corner:
Found 3/4" I.P. tagged LS 3297 at S.E. corner of Parcel 2, 1 PM 38, also found Bolt at N.E. corner of said Parcel 2. 3/4" I.P. 244.00' North of S.E. corner of said Parcel 2 appeared to have been destroyed when power pole was set. Reset missing 3/4" I.P. in record position between found corners.

A description of the physical condition of the monument as found and as set or reset: Reset 5/8" rebar with aluminum cap LS 2843 in place of missing 3/4" I.P., N 00°04'10" E, 244.00' from S.E. corner of Parcel 2, 1 M 38.

SURVEYOR'S STATEMENT

This Corner Record was prepared by me or under my direction in conformance with the Land Surveyors' Act on August 20, 1994.

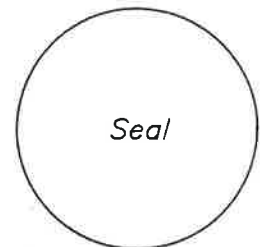
Signed John W. Hamby L.S. 2843
John W. Hamby



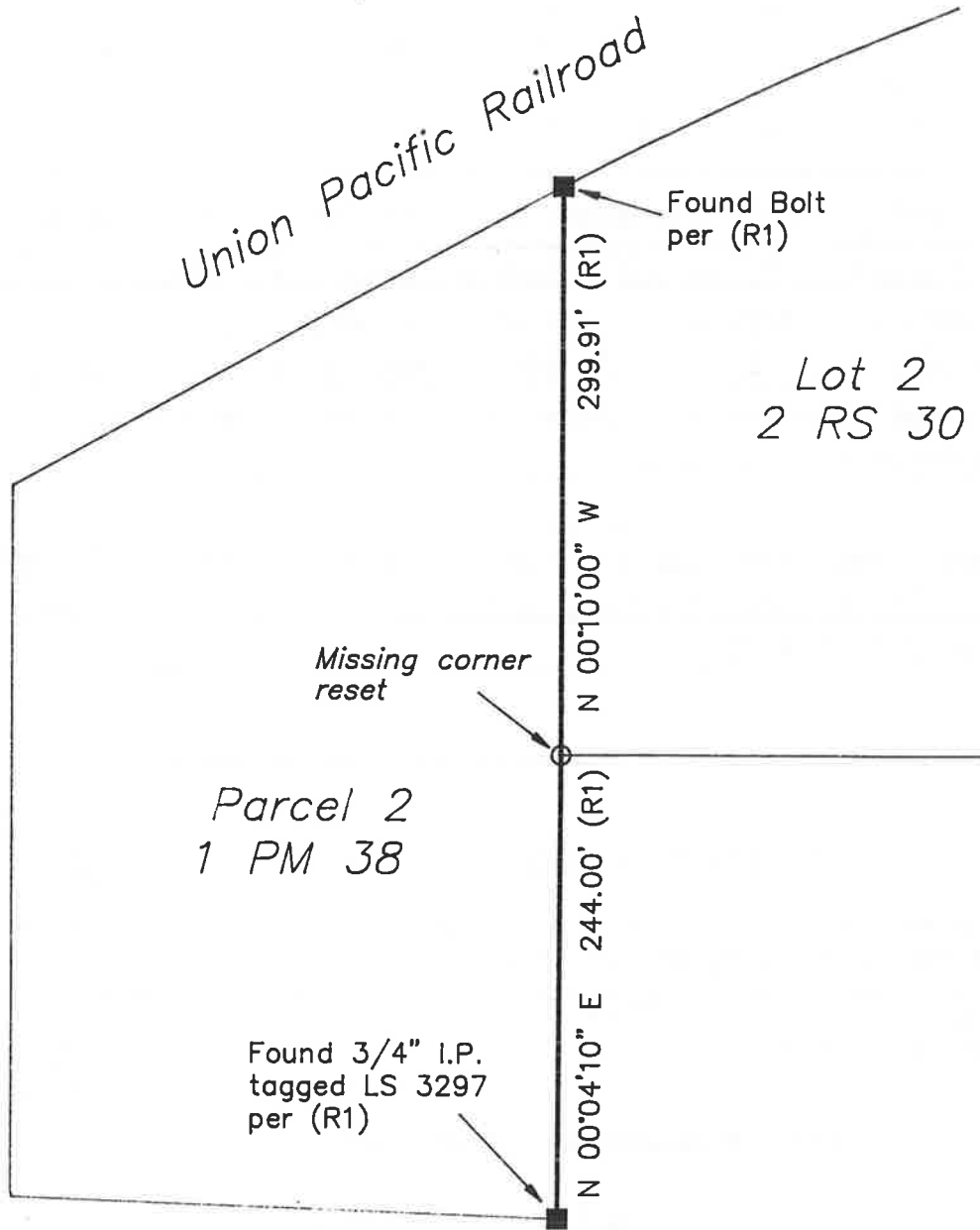
COUNTY SURVEYOR'S STATEMENT

This Corner Record was received 10/3 1994 and examined and filed 10/12 1994.

Signed R. Tom Hunter Title _____



County Surveyor's Comment _____



1" = 100'

LEGEND

- FOUND point as described
- SET 5/8" rebar with aluminum cap LS 2843
- (R1) RECORD per 1 PM 38