

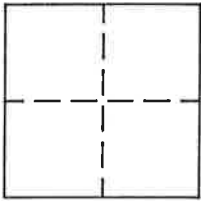
CORNER RECORD

Document Number _____

Lot 70 Plumas Eureka Estates Unit No. 1

County of Plumas, California

Brief Legal Description Located in Section 4, T. 22 N., R. 12 E., M.D.M.



CORNER TYPE

Government Corner Control
Meander Property
Rancho Other
Date of Survey _____

COORDINATES (Optional)

N. _____
E. _____
Zone _____ Datum _____
Elev. _____

Corner- Left as found Found and tagged Established Reestablished Rebuilt

Identification and type of corner found: Evidence used to identify or procedure used to establish or reestablish the corner:
Found 1" square head bolt for Northwest corner of Lot 71 and 1" Iron Pipe for Northeast corner of Lot 70, reset Northwest corner of 70 at record position.

A description of the physical condition of the monument as found and as set or reset: Found 1/4" bolt of same character as that of Southwest corner of Lot 70, Set 5/8" rebar with Plastic Cap LS 2843 at record position

SURVEYOR'S STATEMENT

This Corner Record was prepared by me or under my direction in conformance with the Land Surveyors' Act on August 8, 1994.

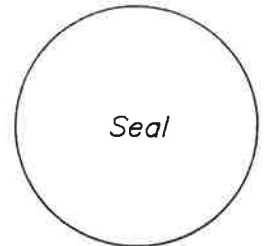
Signed John W. Hamby L.S. 2843
John W. Hamby



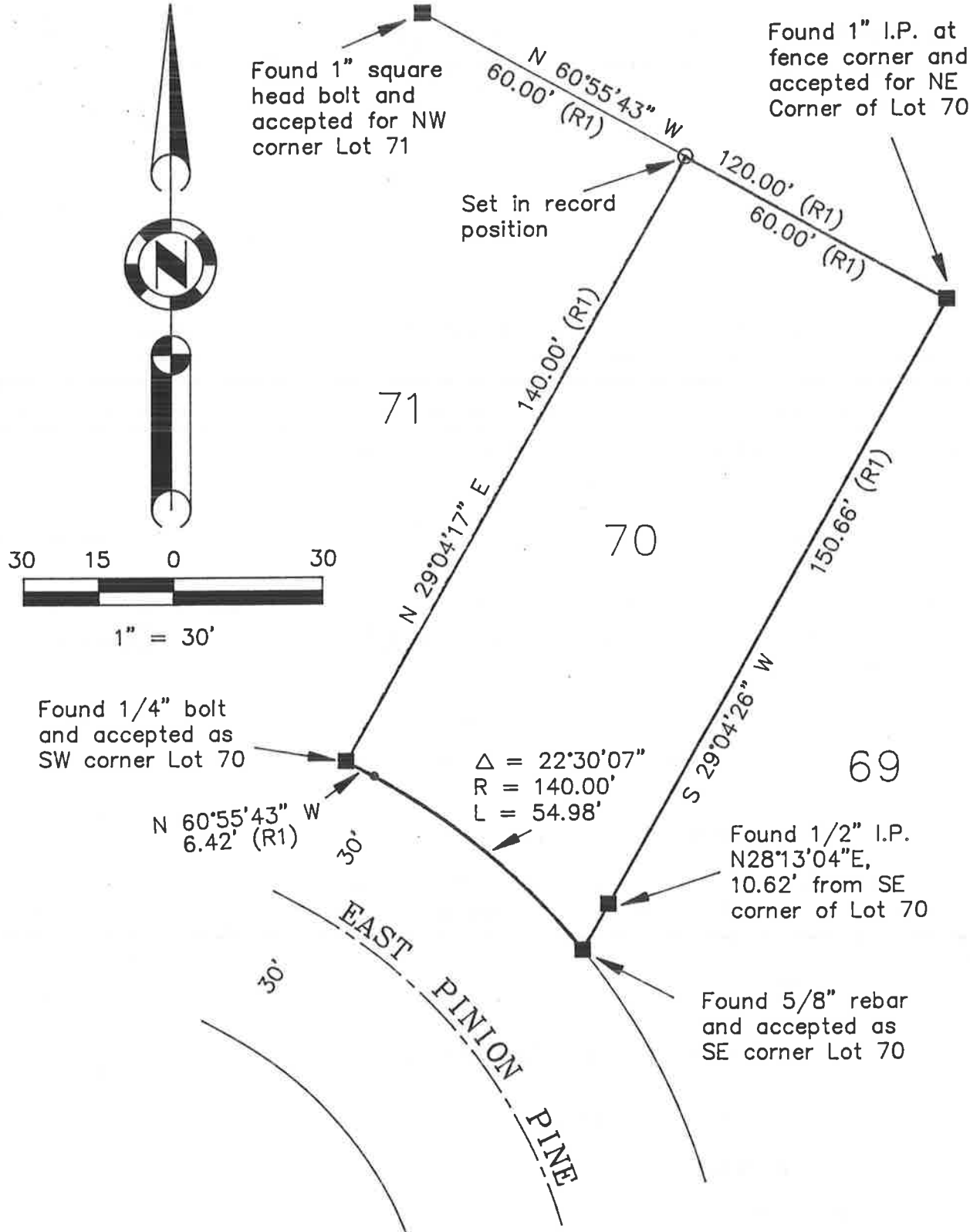
COUNTY SURVEYOR'S STATEMENT

This Corner Record was received 10/3 1994 and examined and filed 10/12 1994.

Signed Tom Hunter Title _____



County Surveyor's Comment _____



Found 1" square head bolt and accepted for NW corner Lot 71

Found 1" I.P. at fence corner and accepted for NE Corner of Lot 70

Set in record position

Found 1/4" bolt and accepted as SW corner Lot 70

Found 1/2" I.P. N28°13'04"E, 10.62' from SE corner of Lot 70

Found 5/8" rebar and accepted as SE corner Lot 70

$\Delta = 22^{\circ}30'07''$
 $R = 140.00'$
 $L = 54.98'$

LEGEND

- FOUND point as described
- SET 5/8" rebar with aluminum cap LS 2843
- Nothing found or set
- (R1) RECORD per 4 M 31

Lot 70, Plumas-Eureka Estates Unit No. 1