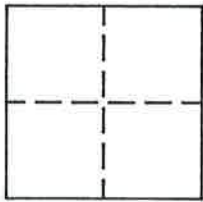


CORNER RECORD

Document Number 98

Portion of Section 6, T. 23 N., R. 14 E., M.D.M. County of Plumas, California

Brief Legal Description Northwest corner of Lot 58, Crocker Mountain Estates, 3 M 44



CORNER TYPE

Government Corner Control
Meander Property
Rancho Other
Date of Survey _____

COORDINATES (Optional)

N. _____
E. _____
Zone _____ Datum _____
Elev. _____

Corner- Left as found Found and tagged Established Reestablished Rebuilt

Identification and type of corner found: Evidence used to identify or procedure used to establish or reestablish the corner: Found 1/2" I.P. with plastic plug at Northwest corner of Lot 59 and Southeast corner of Lot 72, established Northwest corner of Lot 58, also being the Southeast corner of Lot 59 on line between the two found corners.

A description of the physical condition of the monument as found and as set or reset: Set 5/8" rebar with aluminum cap for Northwest corner of Lot 58 as shown on sketch.

SURVEYOR'S STATEMENT

This Corner Record was prepared by me or under my direction in conformance with the Land Surveyors' Act on October 19, 1994.

Signed John W. Hamby L.S. 2843
John W. Hamby



COUNTY SURVEYOR'S STATEMENT

This Corner Record was received 11/2 1994 and examined and filed 11/2 1994.

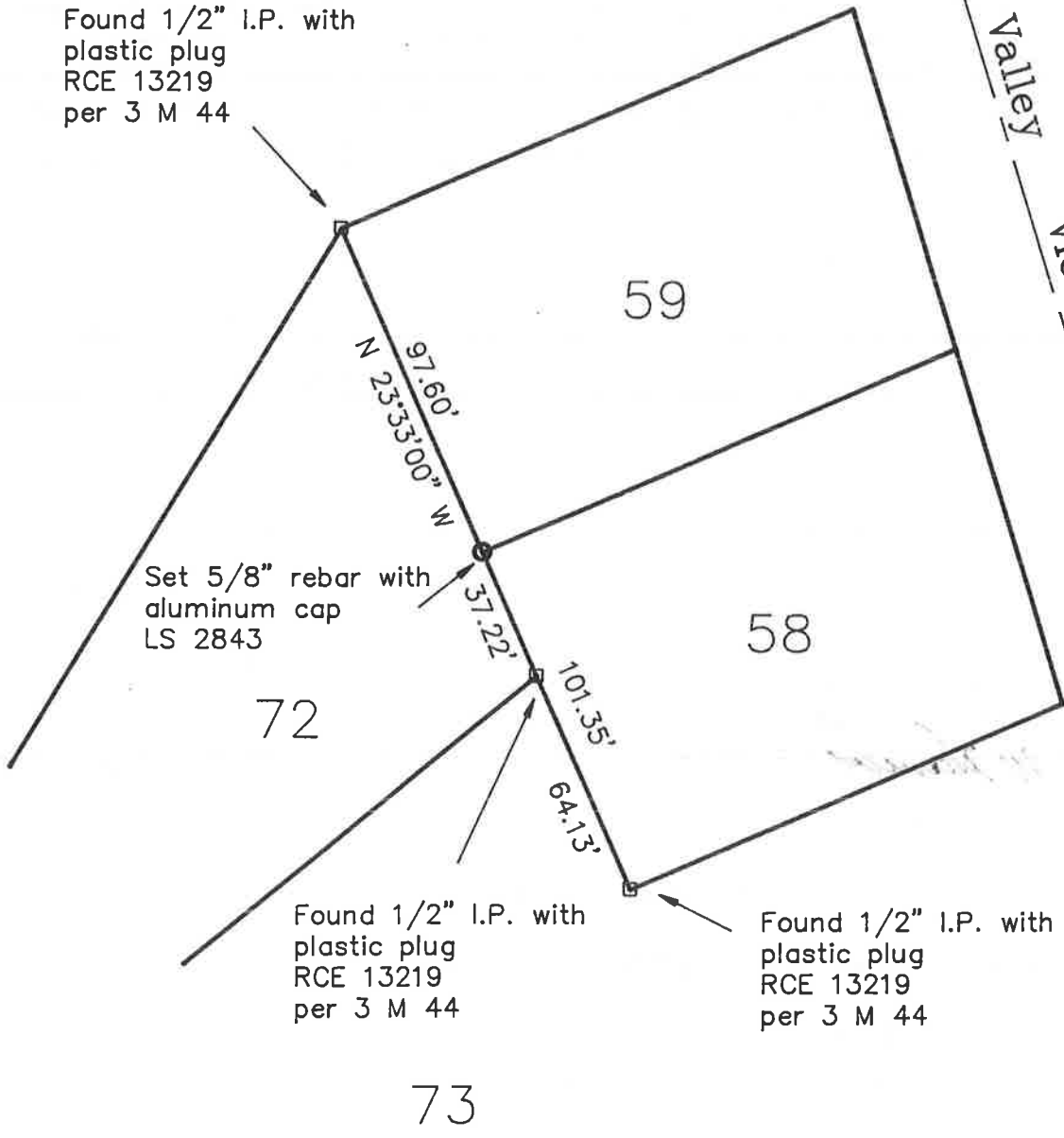
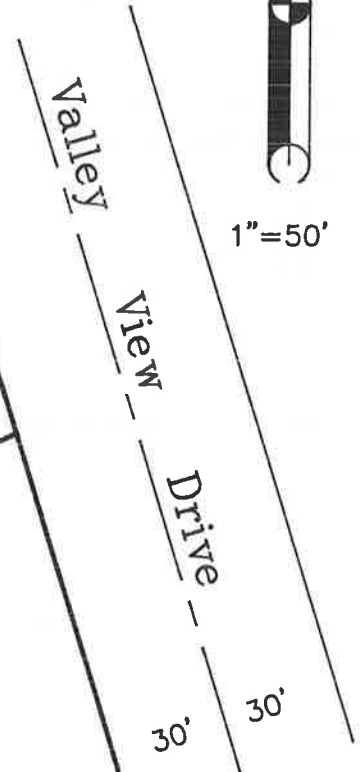
Signed R Tom Schmitz Title _____



County Surveyor's Comment _____



1"=50'



Found 1/2" I.P. with plastic plug
RCE 13219
per 3 M 44

Set 5/8" rebar with aluminum cap
LS 2843

Found 1/2" I.P. with plastic plug
RCE 13219
per 3 M 44

Found 1/2" I.P. with plastic plug
RCE 13219
per 3 M 44

Lots 58 & 59
Crocker Mountain
Estates