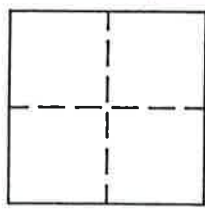


CORNER RECORD

Document Number 99

Portion of Section 6, T. 23 N., R. 14 E., M.D.M. County of Plumas, California

Brief Legal Description Northwest corner Lot 34, Crocker Mountain Estates, 3 M 44



CORNER TYPE

- Government Corner Control
- Meander Property
- Rancho Other
- Date of Survey _____

COORDINATES (Optional)

N. _____
 E. _____
 Zone _____ Datum _____
 Elev. _____

Corner-- Left as found Found and tagged Established Reestablished Rebuilt

Identification and type of corner found: Evidence used to identify or procedure used to establish or reestablish the corner:
Found 1/2" I.P. with plastic plug RCE 13219 at the Northwest corner of Lot 35 and the Southwest corner of Lot 34, from which I established the Northwest corner of Lot 34 which is also the Southwest corner of Lot 35.

A description of the physical condition of the monument as found and as set or reset: Set 5/8" rebar with aluminum cap LS 2843 for the Northwest corner of Lot 34 as shown on sketch.

SURVEYOR'S STATEMENT

This Corner Record was prepared by me or under my direction in conformance with the Land Surveyors' Act on October 19, 1994.

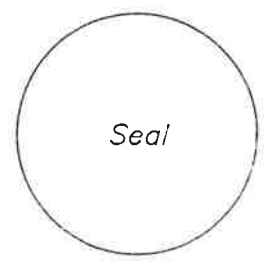
Signed John W. Hamby L.S. 2843
 John W. Hamby



COUNTY SURVEYOR'S STATEMENT

This Corner Record was received 11/2 1994 and examined and filed 11/2 1994.

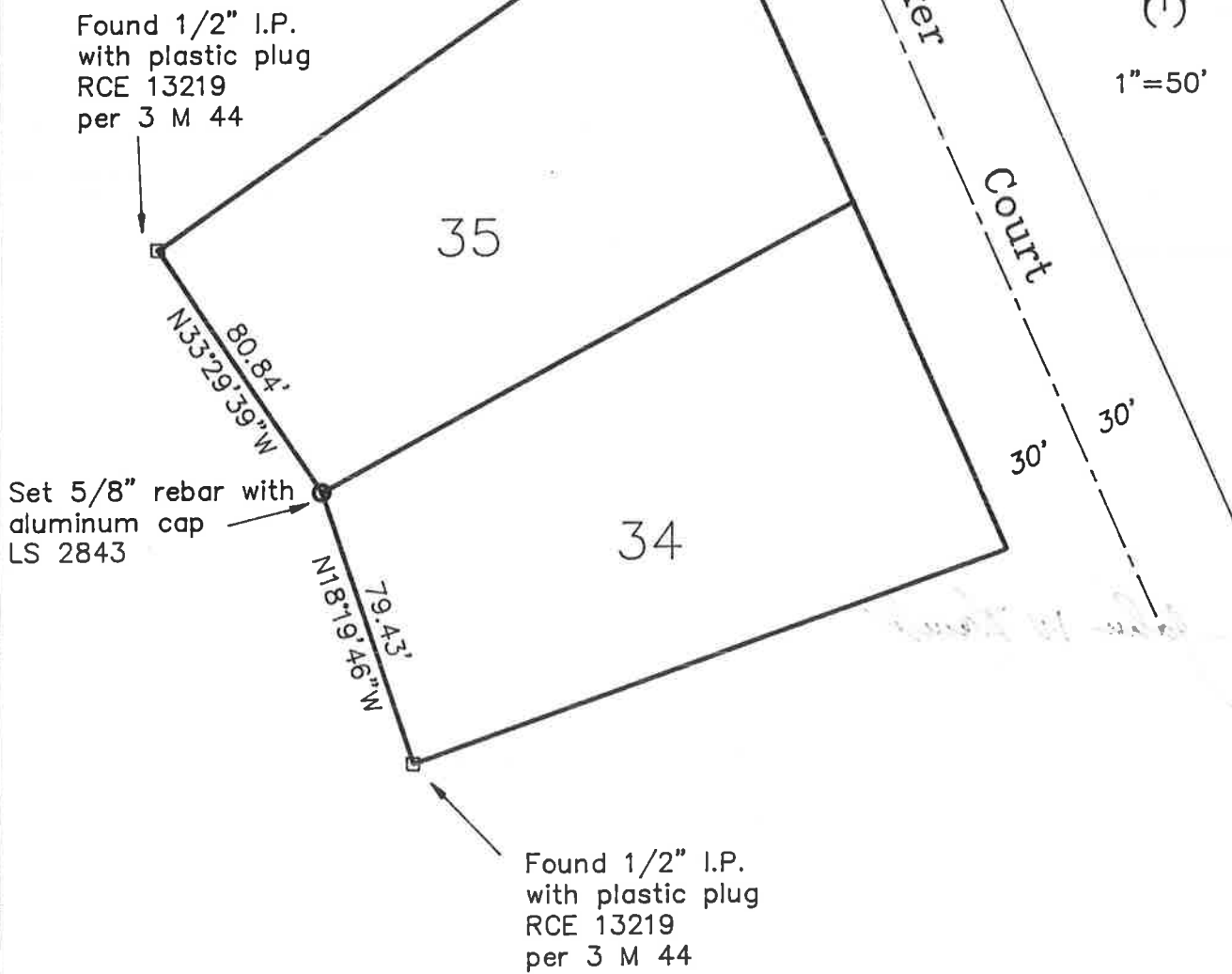
Signed R. Tom Spitzer Title _____



County Surveyor's Comment _____



1"=50'



Lots 34 & 35
Crocker Mountain
Estates