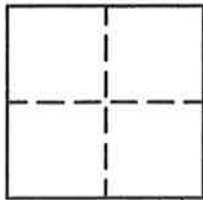


CORNER RECORD

Document Number 100

Portion of Section 6, T. 23 N., R. 14 E., M.D.M. County of Plumas, California

Brief Legal Description Southwest corners of Lots 66, 67, 68 and point of slope easement between Lots 68 and 69, Crocker Mountain Estates, 3 M 44



CORNER TYPE

Government Corner Control
 Meander Property
 Rancho Other
 Date of Survey _____

COORDINATES (Optional)

N. _____
 E. _____
 Zone _____ Datum _____
 Elev. _____

Corner— Left as found Found and tagged Established Reestablished Rebuilt

Identification and type of corner found: Evidence used to identify or procedure used to establish or reestablish the corner: Found 1/2" I.P. at most Southerly corner of Lot 69 and at point of slope easement between Lots 41 & 42 at record positions. All other corners which were missing fell on steep cut banks.

A description of the physical condition of the monument as found and as set or reset: Set 5/8" rebar with aluminum cap LS 2843 at the Southwest corners of Lots 66, 67, 68, and point of slope easement between Lots 68 and 69. at record position between found corners as shown on sketch.

SURVEYOR'S STATEMENT

This Corner Record was prepared by me or under my direction in conformance with the Land Surveyors' Act on October 10, 1994.

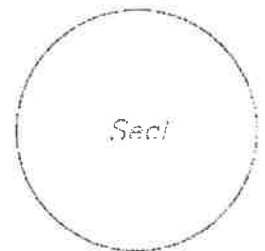
Signed John W. Hamby L.S. 2843
John W. Hamby



COUNTY SURVEYOR'S STATEMENT

This Corner Record was received 11/2 1994 and examined and filed 11/2 1994.

Signed Tom Hunter Title _____

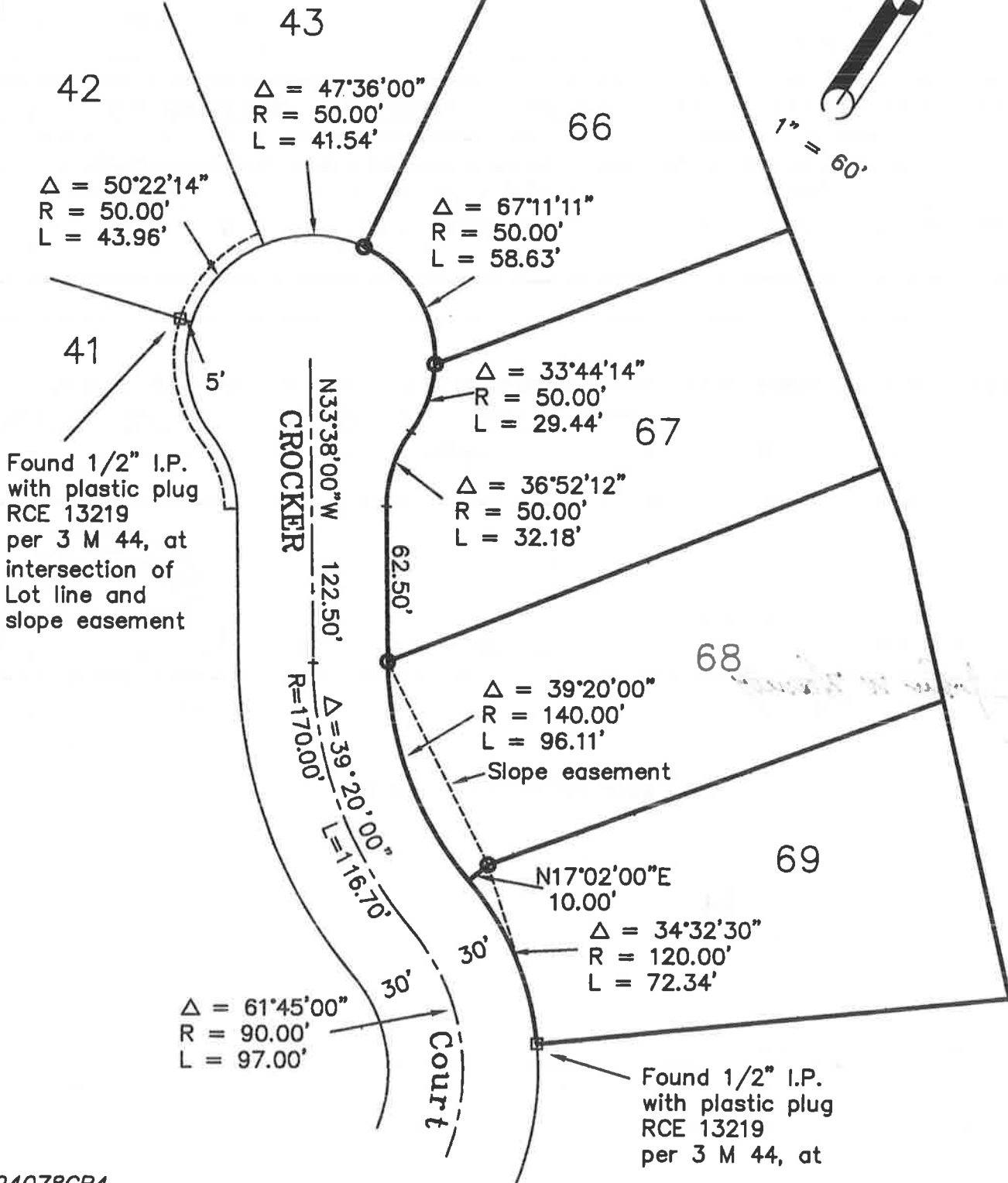
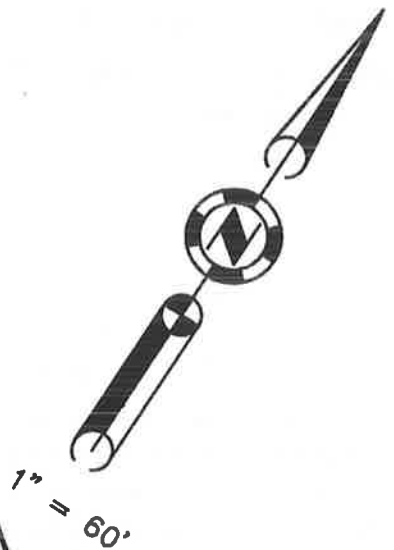


County Surveyor's Comment _____

**Lots 66, 67, 68 & 69
Crocker Mountain
Estates**

Legend

- Set 5/8" rebar with Aluminum Cap LS 2843



9407BCR4